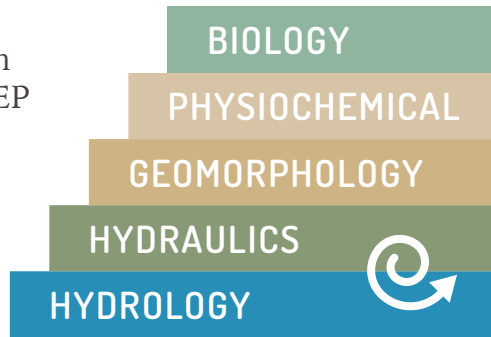


Partnering with Engineers to

IMPLEMENT STREAM IMPROVEMENTS

Through the UDFCD Maintenance Eligibility Program

UDFCD's Maintenance Eligibility Program (MEP) is an **incentive program to encourage responsible design** in development-led stream improvement projects. Stream improvements approved through the MEP process are eligible for UDFCD maintenance in the future. UDFCD highly encourages low maintenance streams when planning and designing improvements (See USDCM Vol 1 Chapter 8).



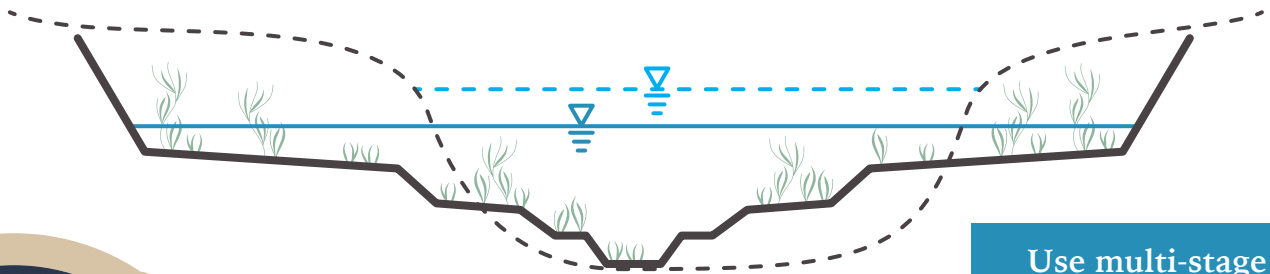
ASSEMBLE TEAM WITH THE RIGHT EXPERTS

Hydrology & Hydraulics Engineer

Ecologist

Geomorphic Engineer

Shallower overbank depth = lower velocity and shear stress >>> Energy focused in active channel >>> Smaller structures and less armoring >>> Less costly to build and maintain



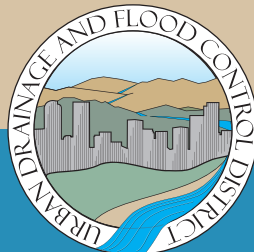
LOW MAINTENANCE

Reduce runoff in the watershed using lots, open spaces, streams and detention.

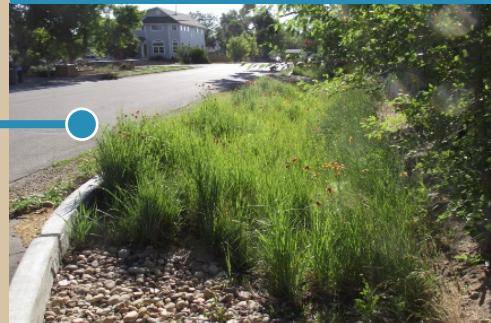
Preserve the stream corridor and mitigate for future impacts

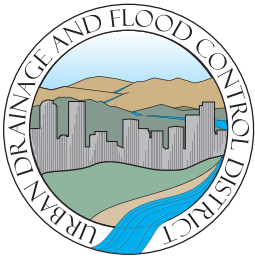
Use multi-stage streams to manage velocity and shear stress throughout the stream corridor.

PROTECTING PEOPLE, PROPERTY AND THE ENVIRONMENT



SCHEDULE AN INITIAL MEETING
303-455-6277





STREAM FUNCTIONS PYRAMID

A Guide for Assessing and Restoring Stream Functions

Source: Will Harman, *Stream Mechanics*

