

1

MONUMENT RECORD

Sea Level Factor
 $\frac{R_e}{R_e + h} < 1.0$

MAP DESIGNATION TG-1 Tucker Gulch

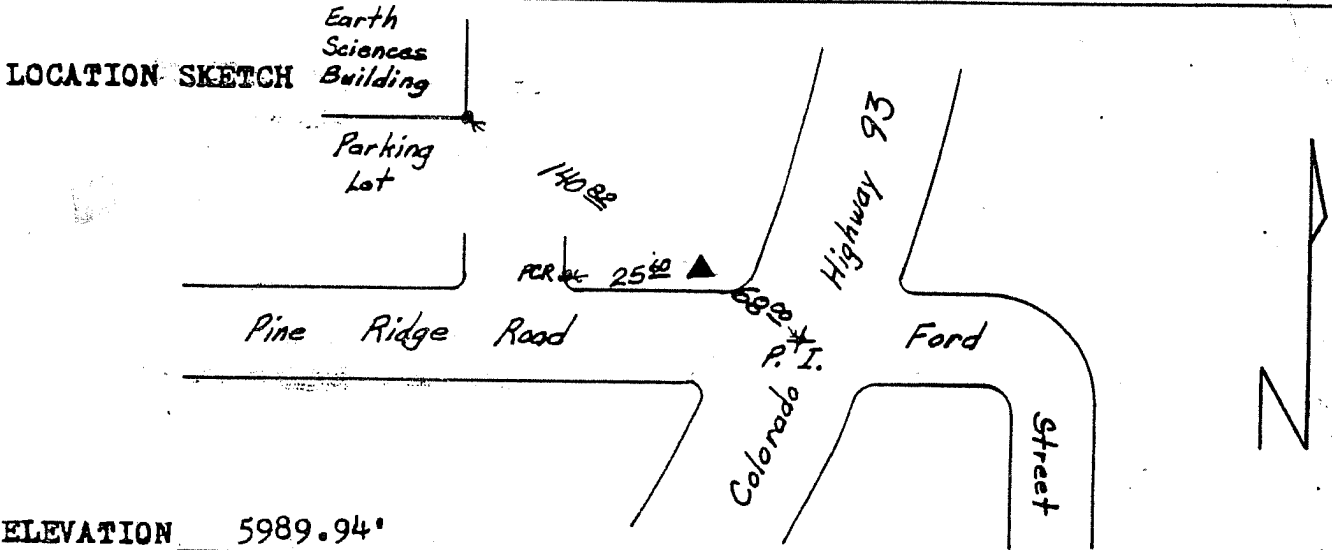
$R_e = 20,902,000$
Radius of earth.
 $h =$ height from sea level

MONUMENT IDENTIFICATION U D & F C D T G - 1

LOCATION DESCRIPTION Brass cap in planter area west of intersection

of Ford Street and Colorado Highway 93 on north side of Pine Ridge Road.

Tie to NW 21, T3S, R70W...N 55-54-14 W @ 2845.21'



ELEVATION 5989.94'

COORDINATES North 162435.79 East 2076016.49

CORRECTION FACTORS USED

| | | | |
|-------------------|-------------------|-----------------|--------------------|
| AVERAGE ELEVATION | <u>5300'</u> | SCALE FACTOR | <u>.9999948</u> |
| SEA LEVEL FACTOR | <u>.999746548</u> | COMBINED FACTOR | <u>1.000347201</u> |

COMPANY SETTING MONUMENT Delta Aerial Surveys, Inc.

DATE SET June, 1982 (APPROXIMATE)

INSPECTION RECORD

| | | |
|-------------|------------------|------------------|
| <u>DATE</u> | <u>INSPECTOR</u> | <u>CONDITION</u> |
|-------------|------------------|------------------|

2

2

MONUMENT RECORD

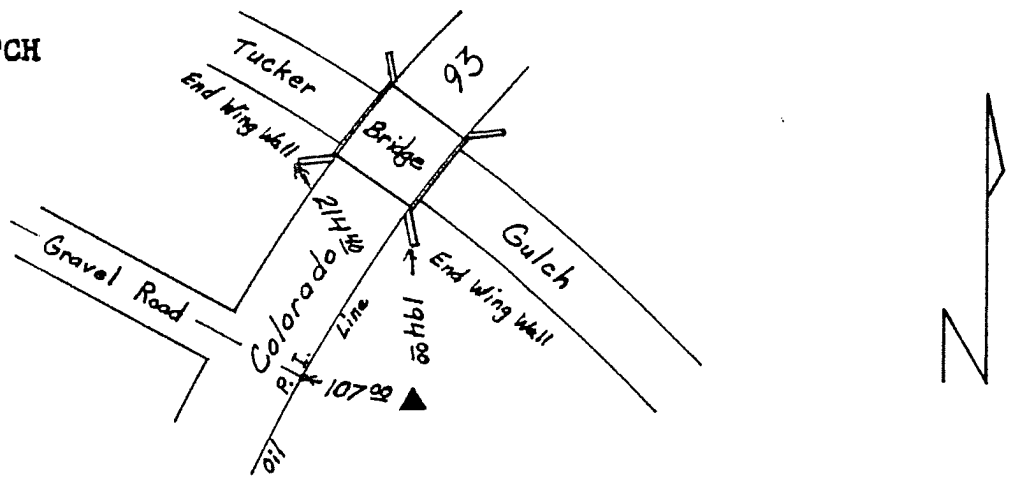
MAP DESIGNATION TG-2 Tucker Gulch

MONUMENT IDENTIFICATION U D & F C D T G - 2

LOCATION DESCRIPTION Brass cap in concrete southeasterly of bridge south of intersection of Golden Gate Canyon Road and Colorado 93.

Tie to SW 21, T3S, R70W...S 43-36-18 W @ 1836.96'

LOCATION SKETCH



ELEVATION 5935.37'

COORDINATES 160091.91 North 2074947.18 East

CORRECTION FACTORS USED

| | | | |
|-------------------|-------------------|-----------------|--------------------|
| AVERAGE ELEVATION | <u>5300'</u> | SCALE FACTOR | <u>.9999948</u> |
| SEA LEVEL FACTOR | <u>.999746548</u> | COMBINED FACTOR | <u>1.000347201</u> |

COMPANY SETTING MONUMENT Delta Aerial Surveys, Inc.

DATE SET June, 1982 (APPROXIMATE)

INSPECTION RECORD

| | | |
|-------------|------------------|------------------|
| <u>DATE</u> | <u>INSPECTOR</u> | <u>CONDITION</u> |
|-------------|------------------|------------------|

3

MONUMENT RECORD

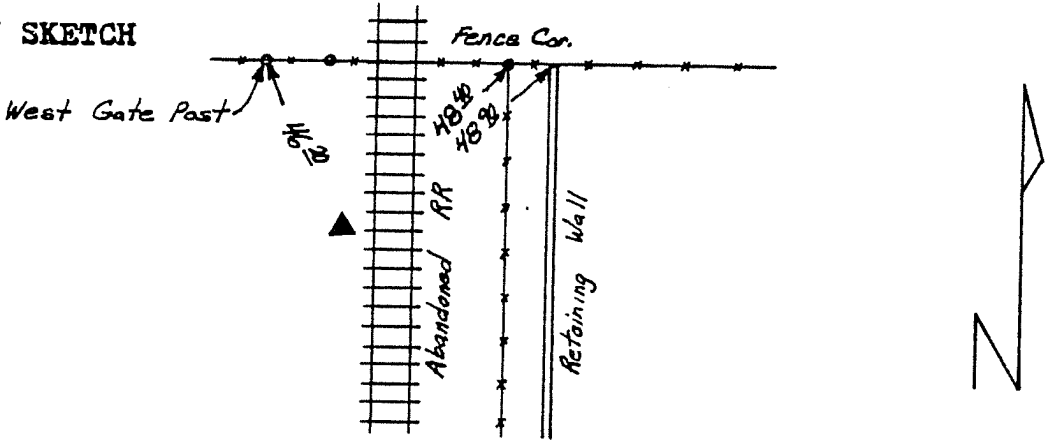
MAP DESIGNATION TG-3 Tucker Gulch

MONUMENT IDENTIFICATION U D & F C D T G - 3

LOCATION DESCRIPTION Brass cap in concrete approximately 10' west of abandoned railroad track and approximately 50' south of section line.

Tie to S $\frac{1}{4}$ 21. T3S. R70W...N 88-48-58 W @ 977.60'

LOCATION SKETCH



ELEVATION 5829.85'

COORDINATES North 158803.54 East 2077285.08

CORRECTION FACTORS USED

AVERAGE ELEVATION 5300' SCALE FACTOR .9999948

SEA LEVEL FACTOR .999746548 COMBINED FACTOR 1.000347201

COMPANY SETTING MONUMENT Delta Aerial Surveys, Inc.

DATE SET June, 1982 (APPROXIMATE)

SECTION RECORD

| <u>DATE</u> | <u>INSPECTOR</u> | <u>CONDITION</u> |
|-------------|------------------|------------------|
|-------------|------------------|------------------|

#4

4

MONUMENT RECORD

MAP DESIGNATION TG-4 Tucker Gulch

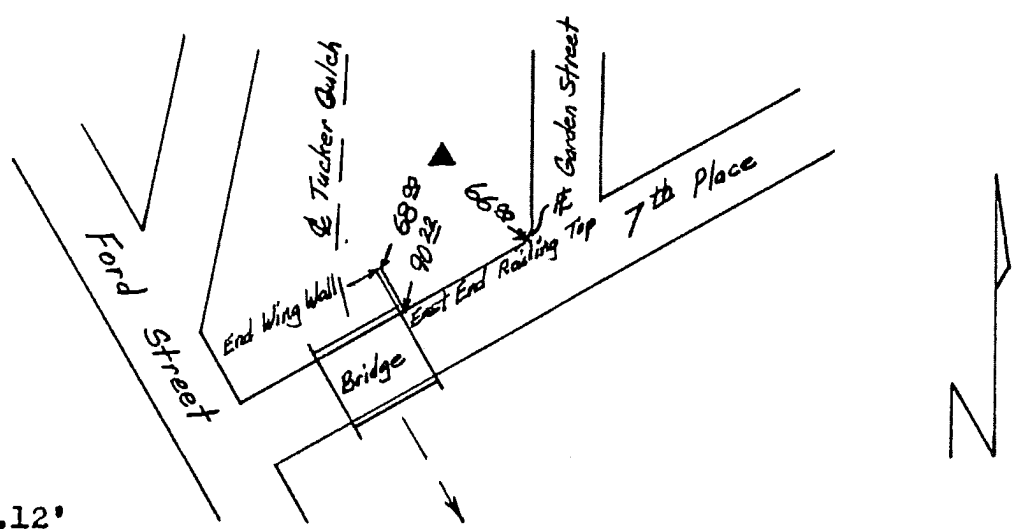
MONUMENT IDENTIFICATION U D & F C D T G - 4

LOCATION DESCRIPTION Brass cap in concrete north of bridge at 7th

Place and Ford Street, east of Tucker Gulch.

Tie to E 1/4 28, T3S, R70W...S83-40-42 E @ 461.20'

LOCATION SKETCH



ELEVATION 5716.12'

COORDINATES North 156285.04 East 2078451.62

CORRECTION FACTORS USED

AVERAGE ELEVATION 5300'

SCALE FACTOR .9999948

SEA LEVEL FACTOR .999746548

COMBINED FACTOR 1.000347201

COMPANY SETTING MONUMENT Delta Aerial Surveys, Inc.

DATE SET June, 1982 (APPROXIMATE)

INSPECTION RECORD

| <u>DATE</u> | <u>INSPECTOR</u> | <u>CONDITION</u> |
|-------------|------------------|------------------|
|-------------|------------------|------------------|

#5

MONUMENT RECORD

5

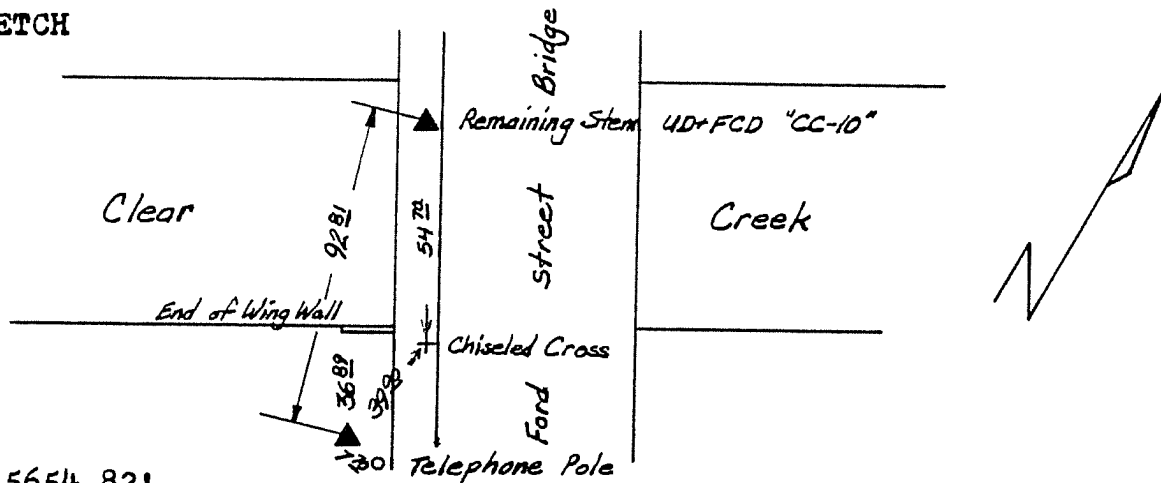
MAP DESIGNATION KR-1 Kenny's Run

MONUMENT IDENTIFICATION U D & F C D K R - 1

LOCATION DESCRIPTION Brass cap in concrete 15' west of Ford Street and 50' south of Clear Creek.

Tie to SW 27, T3S, R70W...S 21-36-32 W @ 1219.21'

LOCATION SKETCH



ELEVATION 5654.82'

COORDINATES North 154682.60 East 2079372.81

CORRECTION FACTORS USED

AVERAGE ELEVATION 5300'

SCALE FACTOR .9999948

SEA LEVEL FACTOR .999746548

COMBINED FACTOR 1.000347201

COMPANY SETTING MONUMENT Delta Aerial Surveys, Inc.

DATE SET June, 1982 (APPROXIMATE)

INSPECTION RECORD

DATE

INSPECTOR

CONDITION

MONUMENT RECORD

6

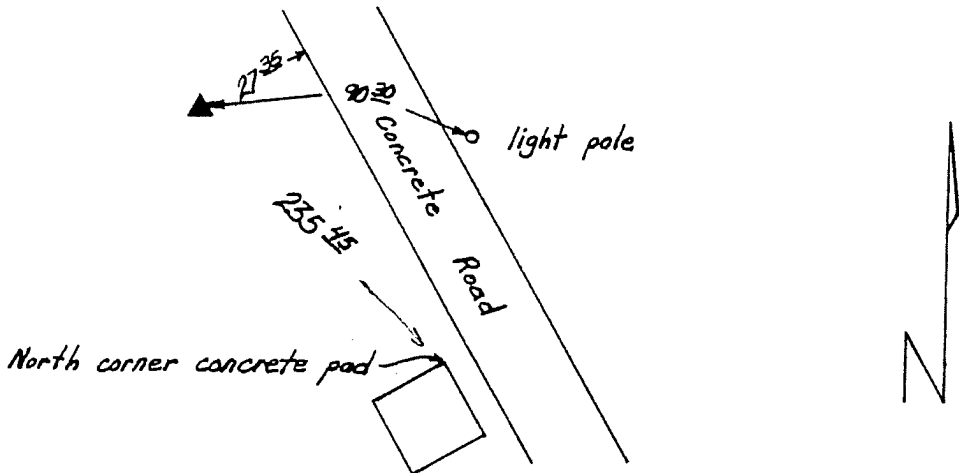
MAP DESIGNATION KR-2 Kenny's Run

MONUMENT IDENTIFICATION U D & F C D K R - 2

LOCATION DESCRIPTION Brass cap in concrete 27.35' southwest of concrete road at Lookout Mountain School for Boys.

Tie to SE 34, T3S, R70W...S 40-53-45 E @ 2101.77'

LOCATION SKETCH



ELEVATION 5808.88'

COORDINATES North 149905.16 East 2082811.24

CORRECTION FACTORS USED

AVERAGE ELEVATION 5300'

SCALE FACTOR .9999948

SEA LEVEL FACTOR .999746548

COMBINED FACTOR 1.000347201

COMPANY SETTING MONUMENT Delta Aerial Surveys, Inc.

DATE SET June, 1982 (APPROXIMATE)

INSPECTION RECORD

| <u>DATE</u> | <u>INSPECTOR</u> | <u>CONDITION</u> |
|-------------|------------------|------------------|
|-------------|------------------|------------------|

#7

MONUMENT RECORD

MAP DESIGNATION KR-3 Kenny's Run

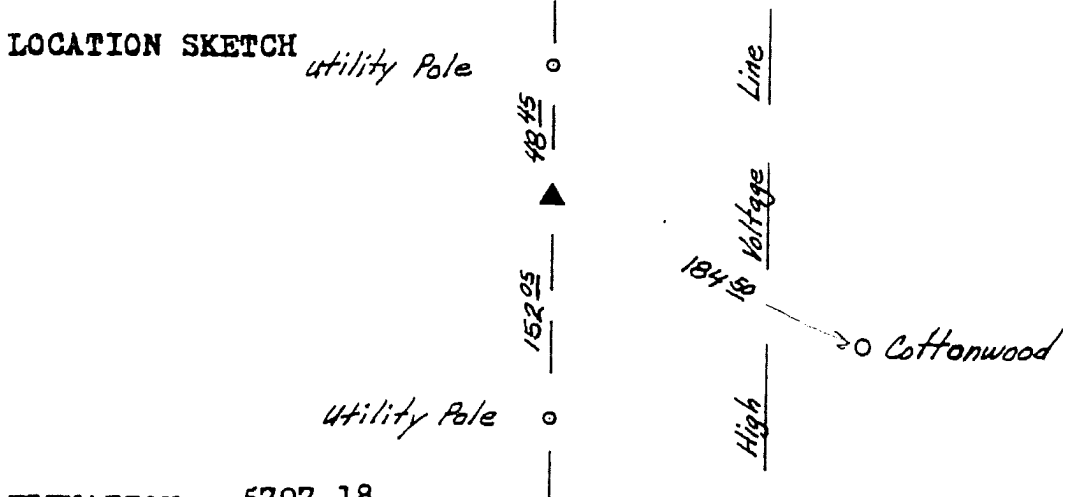
7

MONUMENT IDENTIFICATION U D & F C D K R - 3

LOCATION DESCRIPTION Brass cap in line with wood utility pole line.

Approximately 100' west of high voltage transmission line.

This point is the Section Corner SE 34, T3S, R70W.



ELEVATION 5797.18

COORDINATES North 148316.43 East 2084187.23

CORRECTION FACTORS USED

| | | | |
|-------------------|-------------------|-----------------|--------------------|
| AVERAGE ELEVATION | <u>5300'</u> | SCALE FACTOR | <u>.9999948</u> |
| SEA LEVEL FACTOR | <u>.999746548</u> | COMBINED FACTOR | <u>1.000347201</u> |

COMPANY SETTING MONUMENT Delta Aerial Surveys, Inc.

DATE SET June, 1982 (APPROXIMATE)

INSPECTION RECORD

| | | |
|-------------|------------------|------------------|
| <u>DATE</u> | <u>INSPECTOR</u> | <u>CONDITION</u> |
|-------------|------------------|------------------|

MONUMENT RECORD

MAP DESIGNATION KR-4 Kenny's Run

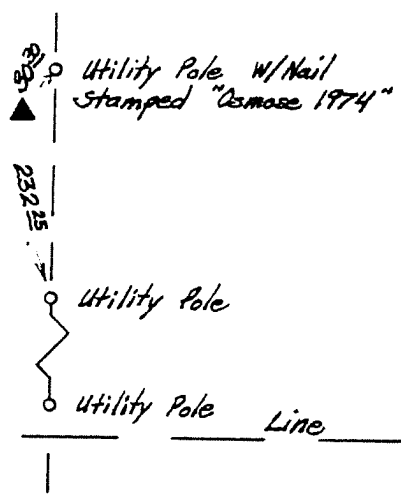
8

MONUMENT IDENTIFICATION U D & F C D K R - 4

LOCATION DESCRIPTION Brass cap in concrete approximately 15' west of power line on low ridge.

Tie to W 1/4 3, T4S, R70W...S 04-45-22 E @ 674.94'

LOCATION SKETCH



ELEVATION 5995.11'

COORDINATES North 146322.17 East 2078887.47

CORRECTION FACTORS USED

AVERAGE ELEVATION 5300' SCALE FACTOR .9999948

SEA LEVEL FACTOR .999746548 COMBINED FACTOR 1.000347201

COMPANY SETTING MONUMENT Delta Aerial Surveys, Inc.

DATE SET June, 1982 (APPROXIMATE)

INSPECTION RECORD

| <u>DATE</u> | <u>INSPECTOR</u> | <u>CONDITION</u> |
|-------------|------------------|------------------|
|-------------|------------------|------------------|

COLORADO LAND SURVEY MONUMENT RECORD

REPORT ONE MONUMENT ONLY ON THIS FORM

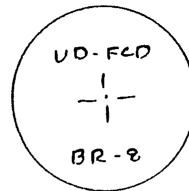
REPRODUCTION OF THIS FORM IS AUTHORIZED.

9 BR 8 (#9)

All items to be filled in by the Land Surveyor using permanent black lettering and lines which can be reproduced. (Except)*

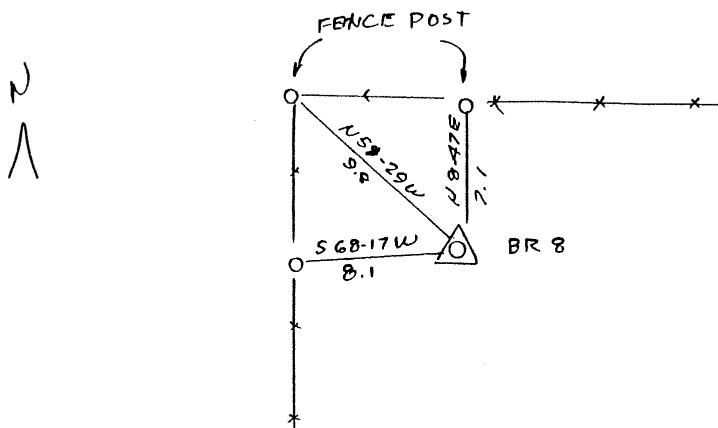
- 1. TYPE OF MONUMENT (Check one)
 - Section Corner
 - Bench mark
 - Quarter Corner
 - Other UD-FCD BM

2. DESCRIPTION OF MONUMENT FOUND



- 3. DESCRIPTION OF MONUMENT ESTABLISHED BY YOU TO PERPETUATE THE LOCATION OF THIS POINT.
 BRASS CAP IN 8" CONCRETE POST ± 1/2 MILE NORTH OF THE INTERSECTION OF WEST 136th AVE AND SHERIDAN BLVD.
 COLO. STATE PLANE COORDINATES CENTRAL ZONE N. 771377.17 E 2125519.64
 COMBINED FACTOR .999884512
 ELKV. 5327.52

4. SKETCH SHOWING RELATIVE LOCATION OF MONUMENT ACCESSORIES AND REFERENCE POINTS STATING WHETHER FOUND OR SET. SHOW SUPPORTING AND/OR CONTRADICTORY EVIDENCE WHERE APPLICABLE.



Date of Field Work 10-31-84

5. CERTIFICATION
This is to certify that I was in responsible charge of the surveying work described in this record and that to the best of my knowledge the information presented herein is true and correct.

Date 12-26-84

Signature John D. Krieschel

(Do not fill in)

Accepted for Filing

State Board of Registration for Professional Engineers and Land Surveyors:

By _____

Date _____

RECEIVED AT OFFICE OF THE COUNTY CLERK;

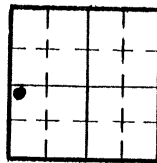
_____ COUNTY

By _____

Date _____

Record to be filed by Index Reference Number, numerically, then alphabetically, under appropriate Township, Range, and Meridian.

6. LOCATION DIAGRAM
1" = 1 Mile



• = Location of Monument



Surveyor's Seal

- 7. SEC. 19, T 15, R 68W, 6th P.M.
 COUNTY ADAMS INDEX REF. NO. _____
- 8. SEC. _____, T _____, R _____, _____ P.M.
 COUNTY _____ INDEX REF. NO. _____

COLORADO LAND SURVEY MONUMENT RECORD

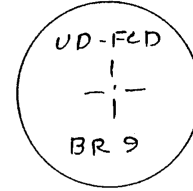
REPORT ONE MONUMENT ONLY ON THIS FORM
REPRODUCTION OF THIS FORM IS AUTHORIZED.

10 BR 9 (#10)

All items to be filled in by the Land Surveyor using permanent black lettering and lines which can be reproduced. (Except)*

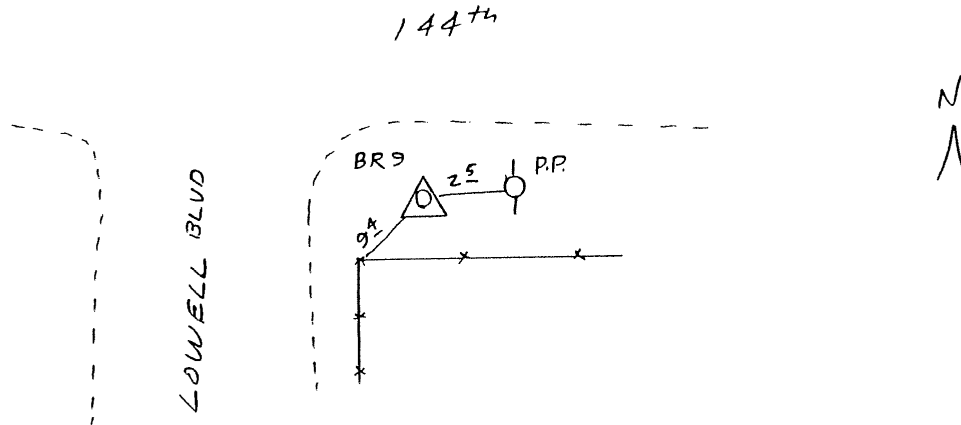
1. TYPE OF MONUMENT (Check one) Section Corner Bench mark Other UD-FCD BR
 Quarter Corner

2. DESCRIPTION OF MONUMENT FOUND



3. DESCRIPTION OF MONUMENT ESTABLISHED BY YOU TO PERPETUATE THE LOCATION OF THIS POINT.
 BRASS CAP IN 8" CONCRETE POST AT THE SOUTH EAST CORNER OF THE INTERSECTION OF WEST 144th AND LOWELL BLVD
 COLO. STATE PLANE COORDINATE CENTRAL ZONE N 774033.66 E 2130712.59
 COMBINED FACTOR .999824512
 ELEV. 5300.26

4. SKETCH SHOWING RELATIVE LOCATION OF MONUMENT ACCESSORIES AND REFERENCE POINTS STATING WHETHER FOUND OR SET. SHOW SUPPORTING AND/OR CONTRADICTIONARY EVIDENCE WHERE APPLICABLE.



Date of Field Work 10-29-84

5. CERTIFICATION

This is to certify that I was in responsible charge of the surveying work described in this record and that to the best of my knowledge the information presented herein is true and correct.

Date 12-26-84

Signature John D. Krieschel

*(Do not fill in)

Accepted for Filing

State Board of Registration for Professional Engineers and Land Surveyors:

By _____

Date _____

RECEIVED AT OFFICE OF THE COUNTY CLERK;

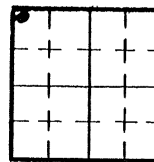
_____ COUNTY

By _____

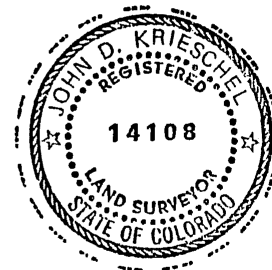
Date _____

Record to be filed by Index Reference Number, numerically, then alphabetically, under appropriate Township, Range, and Meridian.

6. LOCATION DIAGRAM
1" = 1 Mile



• = Location of Monument



Surveyor's Seal

7. SEC. 20, T 1S, R 68W, 6th P.M.
 COUNTY ADAMS INDEX REF. NO. _____
8. SEC. _____, T _____, R _____, _____ P.M.
 COUNTY _____ INDEX REF. NO. _____

COLORADO LAND SURVEY MONUMENT RECORD

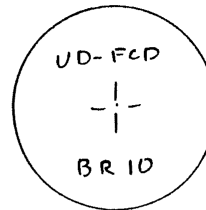
REPORT ONE MONUMENT ONLY ON THIS FORM
REPRODUCTION OF THIS FORM IS AUTHORIZED.

BR #11

All items to be filled in by the Land Surveyor using permanent black lettering and lines which can be reproduced. (Except)*

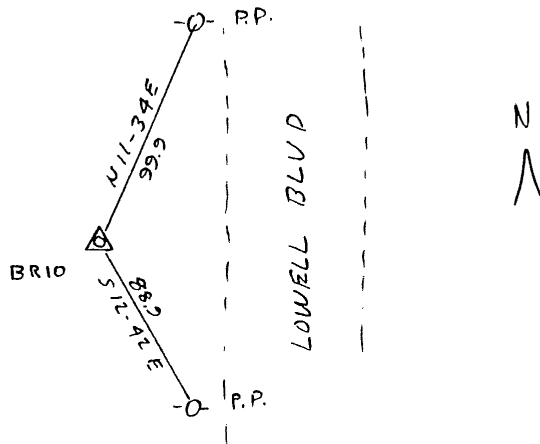
- 1. TYPE OF MONUMENT (Check one)
 - Section Corner
 - Bench mark
 - Quarter Corner
 - Other UD-FCD BM

2. DESCRIPTION OF MONUMENT FOUND



- 3. DESCRIPTION OF MONUMENT ESTABLISHED BY YOU TO PERPETUATE THE LOCATION OF THIS POINT.
 BRASS CAP SET IN 8" CONCRETE POST ON THE NORTHERLY END OF STOCK DAM ±700' NORTH OF THE INTERSECTION OF WEST 136TH AVE AND LOWELL BLVD.
 COLO. STATE PLANE COOR. CENTRAL ZONE N. 769513.01 E. 2130656.11
 COMBINED FACTOR .999884512
 ELEV. 5265.79

4. SKETCH SHOWING RELATIVE LOCATION OF MONUMENT ACCESSORIES AND REFERENCE POINTS STATING WHETHER FOUND OR SET. SHOW SUPPORTING AND/OR CONTRADICTORY EVIDENCE WHERE APPLICABLE.



Date of Field Work 10-31-84

5. CERTIFICATION
This is to certify that I was in responsible charge of the surveying work described in this record and that to the best of my knowledge the information presented herein is true and correct.

Date 12-26-84

Signature John D. Krieschel

*(Do not fill in)

Accepted for Filing

State Board of Registration for Professional Engineers and Land Surveyors:

By _____

Date _____

RECEIVED AT OFFICE OF THE COUNTY CLERK;

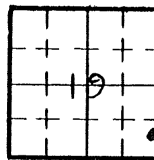
_____ COUNTY

By _____

Date _____

Record to be filed by Index Reference Number, numerically, then alphabetically, under appropriate Township, Range, and Meridian.

6. LOCATION DIAGRAM
1" = 1 Mile



• = Location of Monument



- 7. SEC. 19, T. 1S, R. 68W, 6th P.M.
 COUNTY ADAMS INDEX REF. NO. _____
- 8. SEC. _____, T. _____, R. _____, _____ P.M.
 COUNTY _____ INDEX REF. NO. _____

COLORADO LAND SURVEY MONUMENT RECORD

REPORT ONE MONUMENT ONLY ON THIS FORM
REPRODUCTION OF THIS FORM IS AUTHORIZED.

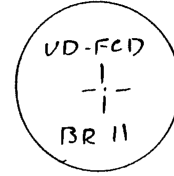
#12
BR 11

All items to be filled in by the Land Surveyor using permanent black lettering and lines which can be reproduced. (Except)*

1. TYPE OF MONUMENT (Check one) Section Corner Bench mark Other UD-FCD BM
 Quarter Corner

2. DESCRIPTION OF MONUMENT FOUND

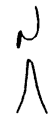
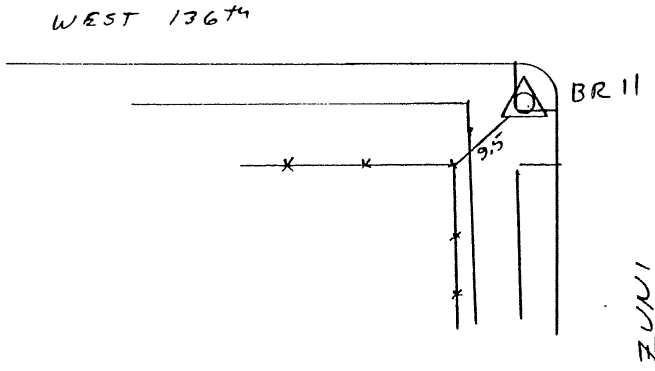
12



3. DESCRIPTION OF MONUMENT ESTABLISHED BY YOU TO PERPETUATE THE LOCATION OF THIS POINT.

BRASS CAP SET IN CONCRETE POST ON THE SOUTHWEST CORNER OF WEST 136TH AND ZUNI
 COLORADO STATE PLANE COOR - CEN. ZONE N. 768718.87 E 2135918.67
 COMBINED FACTOR .999984512
 ELEV. 5230.75

4. SKETCH SHOWING RELATIVE LOCATION OF MONUMENT ACCESSORIES AND REFERENCE POINTS STATING WHETHER FOUND OR SET. SHOW SUPPORTING AND/OR CONTRADICTORY EVIDENCE WHERE APPLICABLE.



Date of Field Work 10-31-84

5. CERTIFICATION

This is to certify that I was in responsible charge of the surveying work described in this record and that to the best of my knowledge the information presented herein is true and correct.

Date 12-26-84

Signature John D. Krieschel

(Do not fill in)

Accepted for Filing

State Board of Registration for Professional Engineers and Land Surveyors:

By _____

Date _____

RECEIVED AT OFFICE OF THE COUNTY CLERK;

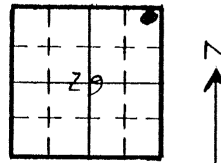
_____ COUNTY

By _____

Date _____

Record to be filed by Index Reference Number, numerically, then alphabetically, under appropriate Township, Range, and Meridian.

6. LOCATION DIAGRAM
1" = 1 Mile



• = Location of Monument



Surveyor's Seal

7. SEC. 29, T 1S, R 68W, 6th P.M.

COUNTY ADAMS INDEX REF. NO. _____

8. SEC. _____, T _____, R _____, _____ P.M.

COUNTY _____ INDEX REF. NO. _____

COLORADO LAND SURVEY MONUMENT RECORD

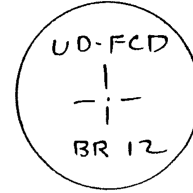
REPORT ONE MONUMENT ONLY ON THIS FORM
REPRODUCTION OF THIS FORM IS AUTHORIZED.

13
BR 12 (#13)

All items to be filled in by the Land Surveyor using permanent black lettering and lines which can be reproduced. (Except*)

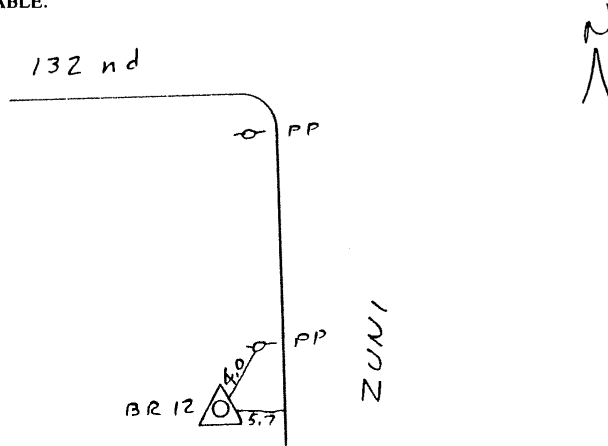
1. TYPE OF MONUMENT (Check one)
- Section Corner
 - Bench mark
 - Other UD-FCD BM
 - Quarter Corner

2. DESCRIPTION OF MONUMENT FOUND



3. DESCRIPTION OF MONUMENT ESTABLISHED BY YOU TO PERPETUATE THE LOCATION OF THIS POINT.
- GRASS CAP IN 8' CONCRETE POST ON THE WEST SIDE OF ZUNI +
500' SOUTH OF 132nd AVE.
COLO. STATE PLANE COOR. CEN. ZONE N. 766247.74 E. 2175369.82
COMBINED FACTOR .999884512
ELEV. 5210.15

4. SKETCH SHOWING RELATIVE LOCATION OF MONUMENT ACCESSORIES AND REFERENCE POINTS STATING WHETHER FOUND OR SET. SHOW SUPPORTING AND/OR CONTRADICTORY EVIDENCE WHERE APPLICABLE.



Date of Field Work 10-31-84

5. CERTIFICATION
This is to certify that I was in responsible charge of the surveying work described in this record and that to the best of my knowledge the information presented herein is true and correct.

Date 12-26-84

Signature John D. Krieschel

(Do not fill in)

Accepted for Filing

State Board of Registration for Professional Engineers and Land Surveyors:

By _____

Date _____

RECEIVED AT OFFICE OF THE COUNTY CLERK;

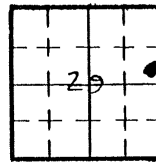
_____ COUNTY

By _____

Date _____

Record to be filed by Index Reference Number, numerically, then alphabetically, under appropriate Township, Range, and Meridian.

6. LOCATION DIAGRAM
1" = 1 Mile



• = Location of Monument



Surveyor's Seal

7. SEC. 29, T. 1 S, R. 68 W, 6th P.M.
COUNTY ADAMS INDEX REF. NO. _____
8. SEC. _____, T. _____, R. _____, _____ P.M.
COUNTY _____ INDEX REF. NO. _____

COLORADO LAND SURVEY MONUMENT RECORD

REPORT ONE MONUMENT ONLY ON THIS FORM
REPRODUCTION OF THIS FORM IS AUTHORIZED.

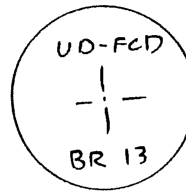
#14 BR 13

All items to be filled in by the Land Surveyor using permanent black lettering and lines which can be reproduced. (Except)*

1. TYPE OF MONUMENT (Check one)
- Section Corner
 - Bench mark
 - Quarter Corner
 - Other UD-FCD

2. DESCRIPTION OF MONUMENT FOUND

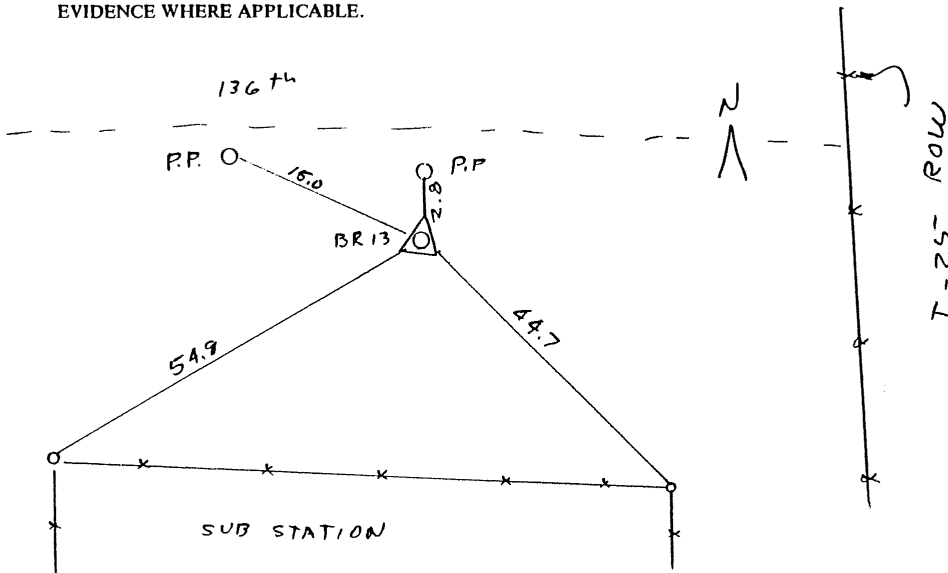
14



3. DESCRIPTION OF MONUMENT ESTABLISHED BY YOU TO PERPETUATE THE LOCATION OF THIS POINT.

BRASS CAP IN 8" CONCRETE POST ON THE SOUTH SIDE OF 136th AVE
ON THE WEST SIDE OF INTERSTATE 25
COLORADO STATE PLANE COORDINATE CEN. ZONE N 762762.39 E 2143570.29
COMBINED FACTOR .999824512
ELEV 5173.39

4. SKETCH SHOWING RELATIVE LOCATION OF MONUMENT ACCESSORIES AND REFERENCE POINTS STATING WHETHER FOUND OR SET. SHOW SUPPORTING AND/OR CONTRADICTORY EVIDENCE WHERE APPLICABLE.



Date of Field Work 10-30-84

5. CERTIFICATION

This is to certify that I was in responsible charge of the surveying work described in this record and that to the best of my knowledge the information presented herein is true and correct.

Date 12-26-84

Signature John D. Krieschel

*(Do not fill in)

Accepted for Filing

State Board of Registration for Professional Engineers and Land Surveyors:

By _____

Date _____

RECEIVED AT OFFICE OF THE COUNTY CLERK;

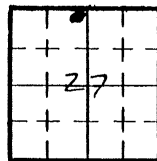
_____ COUNTY

By _____

Date _____

Record to be filed by Index Reference Number, numerically, then alphabetically, under appropriate Township, Range, and Meridian.

6. LOCATION DIAGRAM
1" = 1 Mile



• = Location of Monument



Surveyor's Seal

7. SEC. 27, T 15, R 60W, 6th P.M.
COUNTY ADAMS INDEX REF. NO. _____

8. SEC. _____, T _____, R _____, _____ P.M.
COUNTY _____ INDEX REF. NO. _____

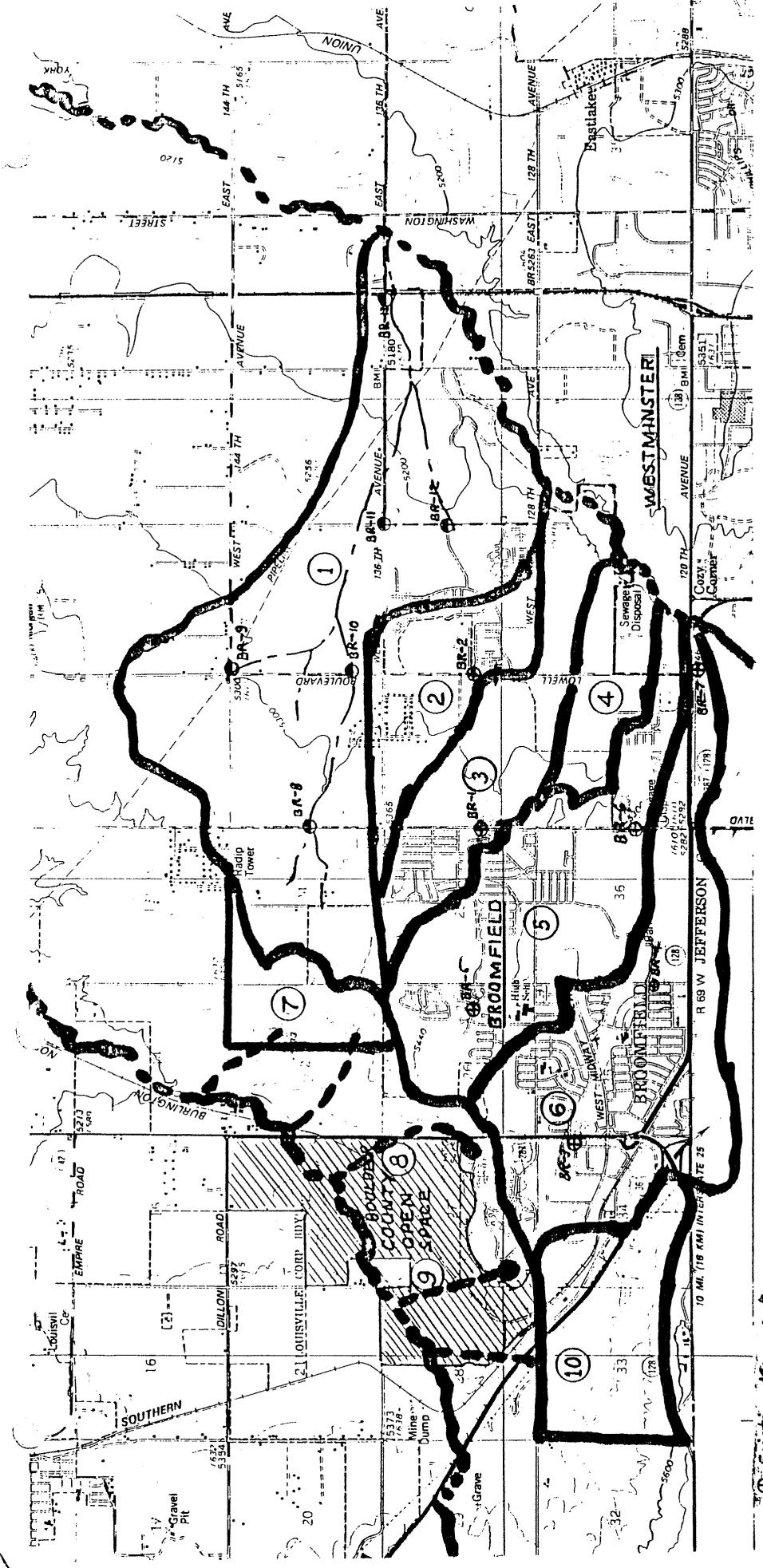


EXHIBIT
OUTFALL SYSTEM PLANNING & FHAD
FOR
BROOMFIELD & VICINITY
AUGUST 1984

⊕ Existing Monument
 ● New Monument

COLORADO LAND SURVEY MONUMENT RECORD
REPORT ONE MONUMENT ONLY ON THIS FORM

#15

All items to be filled in by the Land Surveyor using black ink or typewriter. (Except)*

1. TYPE OF MONUMENT (Check one) Section Corner Bench mark Other URBAN DRAINAGE CONTROL POINT
 Quarter Corner

2. DESCRIPTION OF EVIDENCE FOUND, AND ORIGINAL RECORD CALL, IF KNOWN

15

20902000
20702000 + 5374.26
= 0.999742949

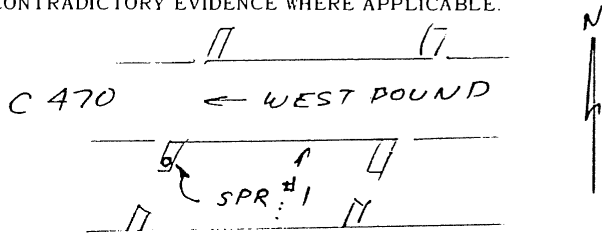
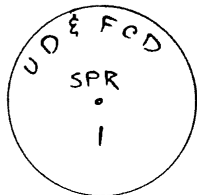
3. DESCRIPTION OF MONUMENT AND/OR ACCESSORIES ESTABLISHED BY YOU TO PERPETUATE THE LOCATION OF THIS POINT. GIVE YOUR ESTIMATE OF POSITIONAL TOLERANCE IF NOT ORIGINAL, UNDISTURBED MONUMENT.

Date of Field Work 5/10/83

SET 2 1/2" BRASS CAP IN THE UPSTREAM LEFT WING WALL OF THE WEST BOUND BRIDGE OVER THE PLATTE RIVER ON COLORADO HIGHWAY 470.

COLO. NORTH ZONE COORDINATES X = 2129512.84
Y = 85207.52
ELEV. 5374.26
φ 39°33'58.7845"
λ 105°02'26.2995"

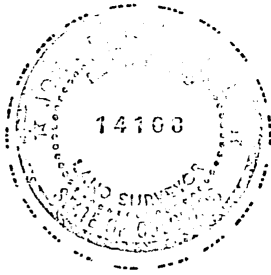
4. SKETCH SHOWING RELATIVE LOCATION OF MONUMENT AND REFERENCE POINTS. SHOW SUPPORTING AND/OR CONTRADICTIONARY EVIDENCE WHERE APPLICABLE.



5. CERTIFICATION

This is to certify that I was in responsible charge of the surveying work described in this record and that to the best of my knowledge the information presented herein is true and correct.

Surveyor's Seal



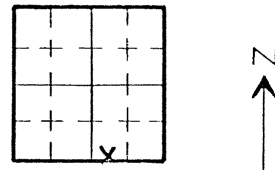
Signature

John D. Kreschel

Reg. No. 14108

Date 7-26-83

6. LOCATION DIAGRAM



SCALE 1" = 1 Mile
• = Location of Monument

(Do not fill in)

Accepted for Filing

State Board of Registration for Professional Engineers and Land Surveyors:

By _____

Date _____

RECEIVED AT OFFICE OF THE COUNTY CLERK;

_____ COUNTY

By _____

Date _____

Record to be filed by Index Reference Number, numerically, then alphabetically, under appropriate Township, Range, and Meridian.

7. SEC. 31, T 5 S R 68W, 6 P.M.

8. COUNTY _____ INDEX REF. NO _____
COUNTY _____ INDEX REF. NO _____

COLORADO LAND SURVEY MONUMENT RECORD
REPORT ONE MONUMENT ONLY ON THIS FORM

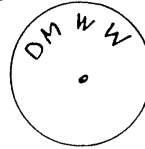
#16

All items to be filled in by the Land Surveyor using black ink or typewriter. (Except)*

- 1. TYPE OF MONUMENT (Check one)
 - Section Corner
 - Bench mark
 - Other URBAN DRAINAGE CONTROL POINT
 - Quarter Corner

2. DESCRIPTION OF EVIDENCE FOUND, AND ORIGINAL RECORD CALL, IF KNOWN
 FOUND 3" BRASS CAP AT THE DOWNSTREAM LEFT CORNER OF THE BRIDGE OVER THE PLATIE RIVER AT BOWLES AVE. MARKED

16



3. DESCRIPTION OF MONUMENT AND/OR ACCESSORIES ESTABLISHED BY YOU TO PERPETUATE THE LOCATION OF THIS POINT. GIVE YOUR ESTIMATE OF POSITIONAL TOLERANCE IF NOT ORIGINAL, UNDISTURBED MONUMENT.

Date of Field Work 5/10/83

(SPR #2)

COLO. NORTH ZONE

X = 2133830.77

Y = 102306.22

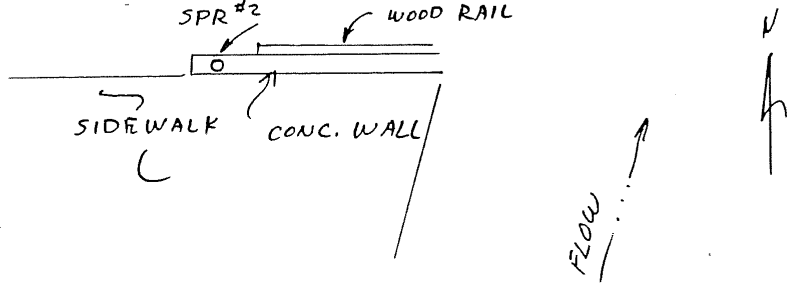
ϕ 39° 35' 47.4384"

λ 105° 01' 29.9970"

ELEV.

5327.64

4. SKETCH SHOWING RELATIVE LOCATION OF MONUMENT AND REFERENCE POINTS SHOW SUPPORTING AND/OR CONTRADICTORY EVIDENCE WHERE APPLICABLE



5. CERTIFICATION
 This is to certify that I was in responsible charge of the surveying work described in this record and that to the best of my knowledge the information presented herein is true and correct

Surveyor's Seal

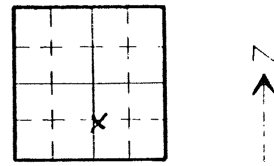


Signature John D. Krieschel

Reg. No 14108

Date 7-26-83

6. LOCATION DIAGRAM



SCALE 1" = 1 Mile
 • Location Monument

(Do not fill in)

Accepted for Filing

State Board of Registration for Professional Engineers and Land Surveyors:

By: _____

Date: _____

RECEIVED AT OFFICE OF THE COUNTY CLERK, _____ COUNTY

By: _____

Date: _____

Record to be filed by Index Reference Number, numerically, then alphabetically, under appropriate Township, Range, and Meridian.

7. SEC. 17 T. 55 R. 68W G. P.M.

8. COUNTY _____ INDEX REF. NO. _____
 COUNTY _____ INDEX REF. NO. _____

COLORADO LAND SURVEY MONUMENT RECORD
REPORT ONE MONUMENT ONLY ON THIS FORM

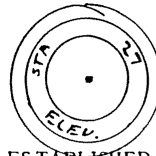
#17

All items to be filled in by the Land Surveyor using black ink or typewriter. (Except)*

1. TYPE OF MONUMENT (Check one) Section Corner Bench mark Other URBAN DRAINAGE CONTROL PT
 Quarter Corner

2. DESCRIPTION OF EVIDENCE FOUND, AND ORIGINAL RECORD CALL, IF KNOWN
 FOUND 3/4" BRASS CAP AT THE DOWN STREAM RIGHT CORNER OF THE BRIDGE OVER THE PLATE RIVER ON BELLVIEW

17



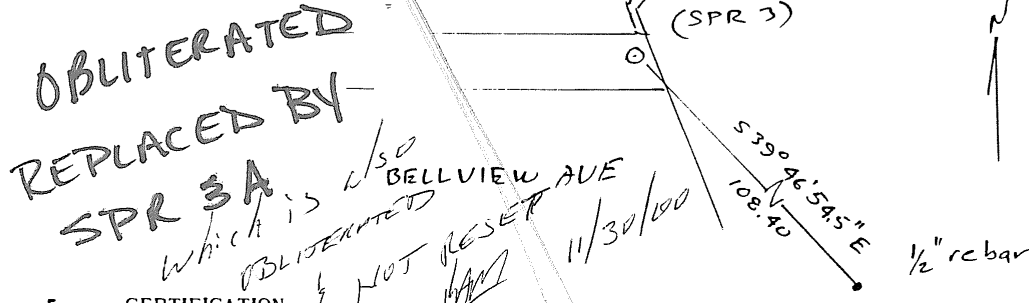
3. DESCRIPTION OF MONUMENT AND/OR ACCESSORIES ESTABLISHED BY YOU TO PERPETUATE THE LOCATION OF THIS POINT. GIVE YOUR ESTIMATE OF POSITIONAL TOLERANCE IF NOT ORIGINAL, UNDISTURBED MONUMENT.

Date of Field Work 5-10-83

COLO. NORTH ZONE

X = 2135899.58 ϕ 39° 37' 27.1000" ELEV. 5313.04
 Y = 106319.89 λ 105° 01' 03.2847"

4. SKETCH SHOWING RELATIVE LOCATION OF MONUMENT AND REFERENCE POINTS SHOW SUPPORTING AND/OR CONTRADICTORY EVIDENCE WHERE APPLICABLE.



OBLITERATED
 REPLACED BY
 SPR 3A
 WHICH IS ALSO BELLVIEW AVE
 OBLITERATED
 NOT RESET
 11/30/00

5. CERTIFICATION
 This is to certify that I was in responsible charge of the surveying work described in this record and that to the best of my knowledge the information presented herein is true and correct.

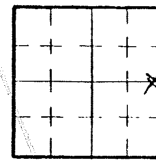
Surveyor's Seal



Signature John D. Krieger

Reg. No 14108
 Date 7/26/83

6. LOCATION DIAGRAM



SCALE 1" = 1 Mile
 • Location Monument

(Do not fill in)

Accepted for Filing

State Board of Registration for Professional Engineers and Land Surveyors:

By _____
 Date _____

RECEIVED AT OFFICE OF THE COUNTY CLERK;
 _____ COUNTY

By _____
 Date _____

Record to be filed by Index Reference Number, numerically, then alphabetically, under appropriate Township, Range, and Meridian.

7. SEC. 8 T 5S R 68W G 6 P.M.

8. COUNTY _____ INDEX REF NO _____
 COUNTY _____ INDEX REF NO _____

COLORADO LAND SURVEY MONUMENT RECORD
REPORT ONE MONUMENT ONLY ON THIS FORM
REPRODUCTION OF THIS FORM IS AUTHORIZED.

FORM # 17

All items to be filled in by the Land Surveyor using permanent black lettering and lines which can be reproduced. (Except)*

1. TYPE OF MONUMENT (Check one) Section Corner Bench mark Other UDFCD Control Point
 Quarter Corner

2. DESCRIPTION OF MONUMENT FOUND.

Found 3 1/2" bronze tablet set in concrete post flush with ground. 1983 MAPPING ON Cap is stamped: U.S. Army Corps of Engineers Sta. Designation #119 Elevation 5311.63

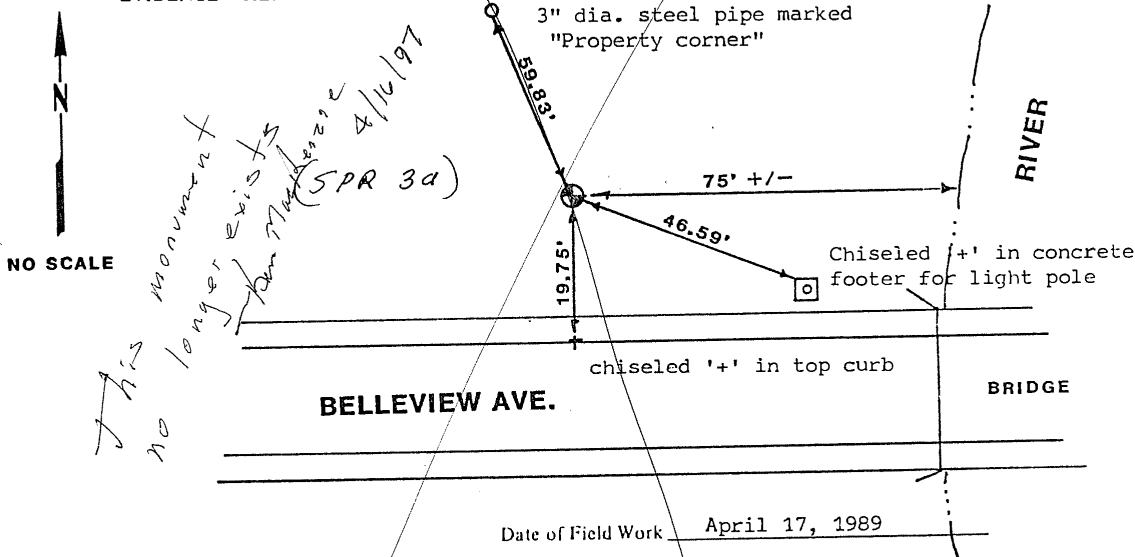
NEW CONTROL POINT SPR3A
5-3-89 P&E
REPLACES SPR3 FROM
SOUTH PLATTE RIVER. SPR3
WAS OBLITERATED DURING
BELLEVIEW BRIDGE CONSTRUCTION

NOTE: We established an elevation for this point of 5311.88 based on a closed level loop from the UDFCD control point at Bowles @ the S. Platte River.

3. DESCRIPTION OF MONUMENT ESTABLISHED BY YOU TO PERPETUATE THE LOCATION OF THIS POINT.

We established State Plane Coordinates (sea level) of N.106,352.87 E. 2,135,600.29 for this monument based on a traverse from the UDFCD control point at Bowles @ the S. Platte River to the UDFCD control point at Oxford @ the S. Platte River. Job factor for this project = 0.999743031 provided by John Kriesche;

4. SKETCH SHOWING RELATIVE LOCATION OF MONUMENT ACCESSORIES AND REFERENCE POINTS STATING WHETHER FOUND OR SET. SHOW SUPPORTING AND/OR CONTRADICTORY EVIDENCE WHERE APPLICABLE.



5. CERTIFICATION This is to certify that I was in responsible charge of the surveying work described in this record and that to the best of my knowledge the information presented herein is true and correct.

Signature Robert D. Wiseman
 Firm Name: Engineering Surveys, Inc.
 Phone: (303) 797-1030

Date April 21, 1989

(Do not fill in)

Accepted for Filing

State Board of Registration for Professional Engineers and Land Surveyors:

By _____

Date _____

RECEIVED AT OFFICE OF THE COUNTY CLERK,

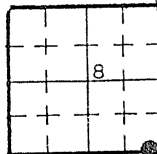
_____ COUNTY

By _____

Date _____

Record to be filed by Index Reference Number, numerically, then alphabetically, under appropriate Township, Range, and Meridian.

6. LOCATION DIAGRAM 1" = 1 Mile



• = Location of Monument



7. SEC. 8 T. 5S R. 68 W. 6th P.M.
 COUNTY Arapahoe INDEX REF. NO. 8.9-R
8. SEC. _____ T. _____ R. _____ P.M.
 COUNTY _____ INDEX REF. NO. _____

COLORADO LAND SURVEY MONUMENT RECORD
REPORT ONE MONUMENT ONLY ON THIS FORM

#18

All items to be filled in by the Land Surveyor using black ink or typewriter. (Except)*

1. TYPE OF MONUMENT (Check one) Section Corner Bench mark Other URBAN DRAINAGE CONTROL POINT
- Quarter Corner Other 18

2. DESCRIPTION OF EVIDENCE FOUND, AND ORIGINAL RECORD CALL, IF KNOWN
 FOUND 2 1/2" BRASS CAP ON THE DOWN STREAM RIGHT WING WALL OF THE BRIDGE OVER THE PLATTE RIVER AT OXFORD. NO STAMPING
 COLO. NORTH ZONE

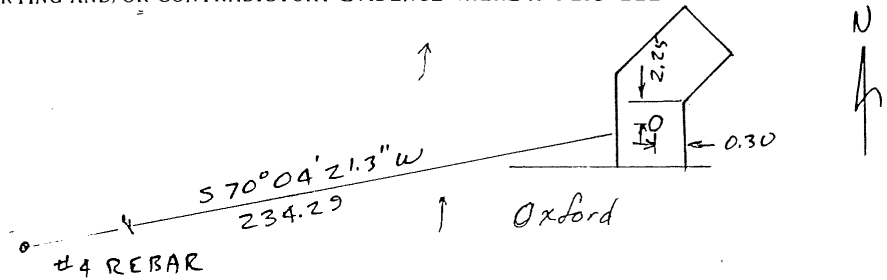
X = 2136796.93 ϕ 39° 38' 32.1578" ELEV
 Y = 112928.74 λ 105° 00' 51.3597" 5292.71

3. DESCRIPTION OF MONUMENT AND/OR ACCESSORIES ESTABLISHED BY YOU TO PERPETUATE THE LOCATION OF THIS POINT. GIVE YOUR ESTIMATE OF POSITIONAL TOLERANCE IF NOT ORIGINAL, UNDISTURBED MONUMENT.

Date of Field Work 5/10/83

SET #4 REBAR AT UPSTREAM LEFT CORNER OF THE SAME BRIDGE

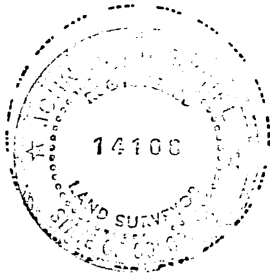
4. SKETCH SHOWING RELATIVE LOCATION OF MONUMENT AND REFERENCE POINTS. SHOW SUPPORTING AND/OR CONTRADICTORY EVIDENCE WHERE APPLICABLE.



5. CERTIFICATION

This is to certify that I was in responsible charge of the surveying work described in this record and that to the best of my knowledge the information presented herein is true and correct.

Surveyor's Seal

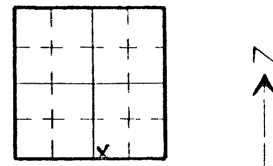


Signature John D. Kuesche

Reg. No 14108

Date 7/26/83

6. LOCATION DIAGRAM



SCALE 1" = 1 Mile
 • Location of Monument

(Do not fill in)

Accepted for Filing

State Board of Registration for Professional Engineers and Land Surveyors:

By _____

Date _____

RECEIVED AT OFFICE OF THE COUNTY CLERK,
 _____ COUNTY

By _____

Date _____

Record to be filed by Index Reference Number, numerically, then alphabetically, under appropriate Township, Range, and Meridian.

7. SEC. 5 T. 55 R. 68W G. 6 P.M.

8. COUNTY _____ INDEX REF NO _____
 COUNTY _____ INDEX REF NO _____

COLORADO LAND SURVEY MONUMENT RECORD
REPORT ONE MONUMENT ONLY ON THIS FORM

#19

All items to be filled in by the Land Surveyor using black ink or typewriter. (Except)*

1. TYPE OF MONUMENT (Check one) Section Corner Bench mark Other URBAN DRAINAGE CONTROL POINT
2. DESCRIPTION OF EVIDENCE FOUND, AND ORIGINAL RECORD CALL, IF KNOWN

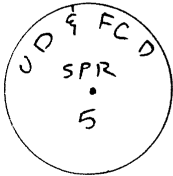
19

3. DESCRIPTION OF MONUMENT AND/OR ACCESSORIES ESTABLISHED BY YOU TO PERPETUATE THE LOCATION OF THIS POINT. GIVE YOUR ESTIMATE OF POSITIONAL TOLERANCE IF NOT ORIGINAL, UNDISTURBED MONUMENT.

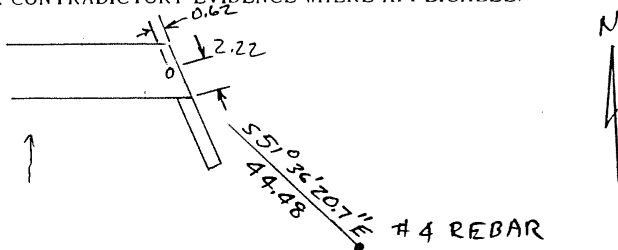
Date of Field Work 4/24/83

SET 2 1/4" BRASS CAP IN THE SIDEWALK AT THE UPSTREAM RIGHT CORNER OF THE BRIDGE OVER THE PLATTE RIVER AND DARTMOUTH

COLD. NORTH ZONE
X = 2140017.84 ϕ 39° 39' 37.3834" ELEV. 5269.81
Y = 119525.41 λ 105° 00' 09.7104"



4. SKETCH SHOWING RELATIVE LOCATION OF MONUMENT AND REFERENCE POINTS SHOW SUPPORTING AND/OR CONTRADICTORY EVIDENCE WHERE APPLICABLE.



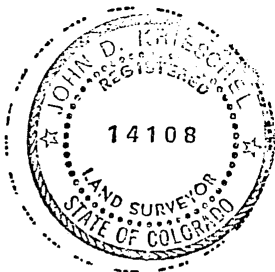
5. CERTIFICATION
This is to certify that I was in responsible charge of the surveying work described in this record and that to the best of my knowledge the information presented herein is true and correct.

Surveyor's Seal

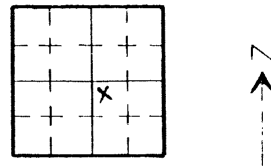
Signature John D. Kriesche

Reg. No 14108

Date 7/26/83



6. LOCATION DIAGRAM



*(Do not fill in)

Accepted for Filing

State Board of Registration for Professional Engineers and Land Surveyors:

By _____

Date _____

RECEIVED AT OFFICE OF THE COUNTY CLERK;

_____ COUNTY

By _____

Date _____

Record to be filed by Index Reference Number, numerically, then alphabetically, under appropriate Township, Range, and Meridian.

SCALE 1" = 1 Mile
• Location of Monument

7. SEC. 33 T 4S R 68W 6 PM

8. COUNTY _____ INDEX REF NO _____
COUNTY _____ INDEX REF NO _____

LS 127 (REV. JULY 1, 1975)

COLORADO LAND SURVEY MONUMENT RECORD
REPORT ONE MONUMENT ONLY ON THIS FORM

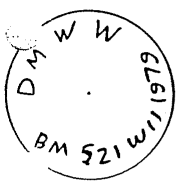
#20

All items to be filled in by the Land Surveyor using black ink or typewriter. (Except)*

1. TYPE OF MONUMENT (Check one) Section Corner Bench mark Other URBAN DRAINAGE CONTROL POINT
- Quarter Corner Other 20

2. DESCRIPTION OF EVIDENCE FOUND, AND ORIGINAL RECORD CALL, IF KNOWN

FOUND 3/4" BRASS CAP IN THE WING WALL AT THE DOWNSTREAM LEFT CORNER OF THE BRIDGE OVER THE PLATTE RIVER AT EVANS AVE.



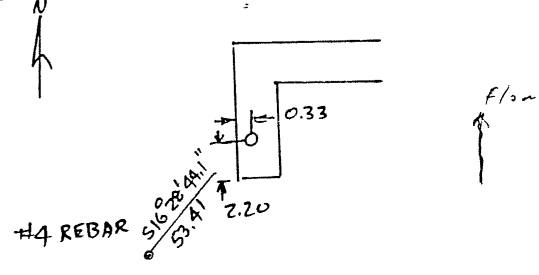
3. DESCRIPTION OF MONUMENT AND/OR ACCESSORIES ESTABLISHED BY YOU TO PERPETUATE THE LOCATION OF THIS POINT. GIVE YOUR ESTIMATE OF POSITIONAL TOLERANCE IF NOT ORIGINAL, UNDISTURBED MONUMENT.

Date of Field Work 4/23/83

(SPR 6)

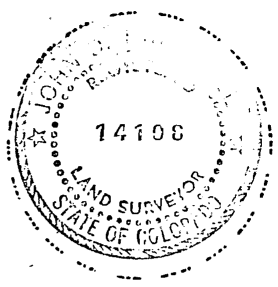
COLO NORTH ZONE
 $X = 2141369.25$ $\phi 39^{\circ}40'42.1905''$ ELEV. 5255.02
 $Y = 126090.65$ $\lambda 104^{\circ}59'51.9560''$

4. SKETCH SHOWING RELATIVE LOCATION OF MONUMENT AND REFERENCE POINTS SHOW SUPPORTING AND/OR CONTRADICTORY EVIDENCE WHERE APPLICABLE.



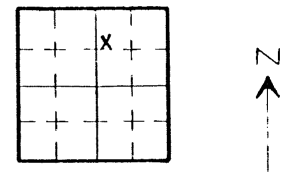
5. CERTIFICATION
 This is to certify that I was in responsible charge of the surveying work described in this record and that to the best of my knowledge the information presented herein is true and correct.

Surveyor's Seal



Signature John D. Kersch
 Reg. No. 14108
 Date 7/26/83

6. LOCATION DIAGRAM



(Do not fill in)

Accepted for Filing

State Board of Registration for Professional Engineers and Land Surveyors:

By _____
 Date _____

RECEIVED AT OFFICE OF THE COUNTY CLERK;
 _____ COUNTY

By _____
 Date _____

Record to be filed by Index Reference Number, numerically, then alphabetically under appropriate Township, Range, and Meridian.

SCALE 1" = 1 Mile
 • Location of Monument

7. SEC. 28, T. 4S, R. 68W 6 P. M

8. COUNTY _____ INDEX REF NO _____
 COUNTY _____ INDEX REF NO _____

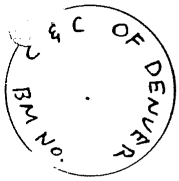
COLORADO LAND SURVEY MONUMENT RECORD
REPORT ONE MONUMENT ONLY ON THIS FORM

#21

All items to be filled in by the Land Surveyor using black ink or typewriter. (Except)*

1. TYPE OF MONUMENT (Check one) Section Corner Bench mark Quarter Corner Other URBAN DRAINAGE CONTROL POINT

2. DESCRIPTION OF EVIDENCE FOUND, AND ORIGINAL RECORD CALL, IF KNOWN
 FOUND 2" BRASS CAP IN THE CURB AT THE DOWN STREAM RIGHT CORNER OF THE BRIDGE OVER THE PLATTE RIVER AT MISSISSIPPI



21

3. DESCRIPTION OF MONUMENT AND/OR ACCESSORIES ESTABLISHED BY YOU TO PERPETUATE THE LOCATION OF THIS POINT. GIVE YOUR ESTIMATE OF POSITIONAL TOLERANCE IF NOT ORIGINAL, UNDISTURBED MONUMENT.

Date of Field Work 4/27/83

(SPR #7)

COLO NORTH ZONE

X = 2143081.30

ϕ 39° 41' 48.2663"

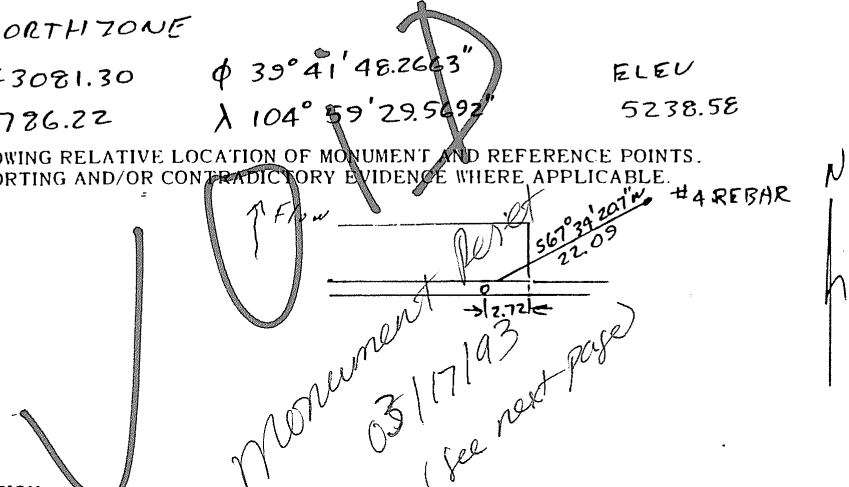
ELEV

Y = 132786.22

λ 104° 59' 29.5692"

5238.58

4. SKETCH SHOWING RELATIVE LOCATION OF MONUMENT AND REFERENCE POINTS. SHOW SUPPORTING AND/OR CONTRADICTORY EVIDENCE WHERE APPLICABLE.



5. CERTIFICATION
 This is to certify that I was in responsible charge of the surveying work described in this record and that to the best of my knowledge the information presented herein is true and correct.

Surveyor's Seal

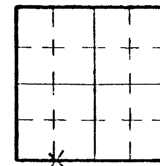


Signature John D. Warden

Reg. No 14108

Date 7/26/83

6. LOCATION DIAGRAM



SCALE 1" = 1 Mile

• Location of Monument

*(Do not fill in)

Accepted for Filing

State Board of Registration for Professional Engineers and Land Surveyors:

By _____

Date _____

RECEIVED AT OFFICE OF THE COUNTY CLERK;

_____ COUNTY

By _____

Date _____

Record to be filed by Index Reference Number, numerically, then alphabetically, under appropriate Township, Range, and Meridian.

7. SEC. 15 T 4S R 62W 6 P.M.

8. COUNTY _____ INDEX REF NO _____

COUNTY _____ INDEX REF NO _____

COLORADO LAND SURVEY MONUMENT RECORD
REPORT ONE MONUMENT ONLY ON THIS FORM
REPRODUCTION OF THIS FORM IS AUTHORIZED.

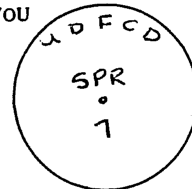
21

All items to be filled in by the Land Surveyor using permanent black lettering and lines which can be reproduced. (Except)*

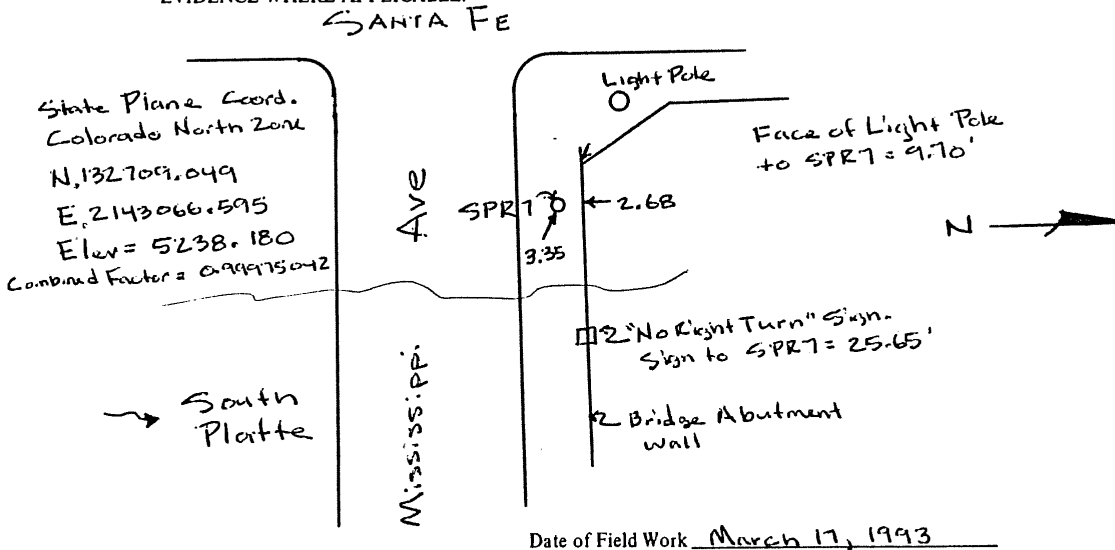
1. TYPE OF MONUMENT (Check one) Section Corner Bench mark Quarter Corner Other Horizontal Control Point
2. DESCRIPTION OF MONUMENT FOUND AND MONUMENT MARKINGS.

3. DESCRIPTION OF MONUMENT AND MONUMENT MARKINGS ESTABLISHED BY YOU TO PERPETUATE THE LOCATION OF THIS POINT.

3 1/4" Brass Domed Disk Set in existing concrete sidewalk



4. SKETCH SHOWING RELATIVE LOCATION OF MONUMENT ACCESSORIES AND REFERENCE POINTS STATING WHETHER FOUND OR SET. SHOW SUPPORTING AND/OR CONTRADICTORY EVIDENCE WHERE APPLICABLE.



5. CERTIFICATION
This is to certify that I was in responsible charge of the surveying work described in this record and that to the best of my knowledge the information presented herein is true and correct.

Signature [Signature]
 Firm Name: Greenhorn & O'Mara
 Firm Address: 3131 S. Vaughn Way Suite 428 Aurora, CO
 Phone: 303-755-9000

Date March 23, 1993

(Do not fill in)

Accepted for Filing

State Board of Registration for Professional Engineers and Land Surveyors:

By _____

Date _____

RECEIVED AT OFFICE OF THE COUNTY CLERK;

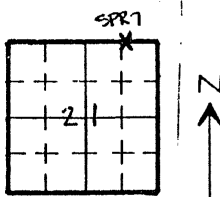
_____ COUNTY

By _____

Date _____

Record to be filed by Index Reference Number, numerically, then alphabetically, under appropriate Township, Range, and Meridian.

6. LOCATION DIAGRAM
1" = 1 Mile



• = Location of Monument



Surveyor's Seal

7. SEC. 21, T 45, R 6W, 6th P.M.
COUNTY Denver INDEX REF. NO. _____
8. SEC. _____, T _____, R _____, _____ P.M.
COUNTY _____ INDEX REF. NO. _____

COLORADO LAND SURVEY MONUMENT RECORD
REPORT ONE MONUMENT ONLY ON THIS FORM

#22

All items to be filled in by the Land Surveyor using black ink or typewriter. (Except*)

1. TYPE OF MONUMENT Section Corner Bench mark
 (Check one) Quarter Corner Other URBAN DRAINAGE CONTROL POINT
2. DESCRIPTION OF EVIDENCE FOUND, AND ORIGINAL RECORD CALL, IF KNOWN

3. DESCRIPTION OF MONUMENT AND/OR ACCESSORIES ESTABLISHED BY YOU TO PERPETUATE THE LOCATION OF THIS POINT. GIVE YOUR ESTIMATE OF POSITIONAL TOLERANCE IF NOT ORIGINAL, UNDISTURBED MONUMENT.

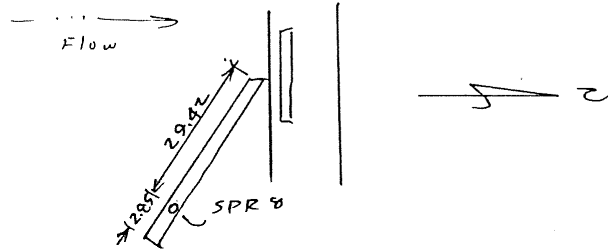
Date of Field Work 4/23/83

UD & PCD
SPR
8

SET 2 1/2" BRASS CAP ON THE WING WALL UPSTREAM RIGHT CORNER OF THE BRIDGE OVER THE PLATTE RIVER AT ALAMEDA.
COLO. NORTH ZONE

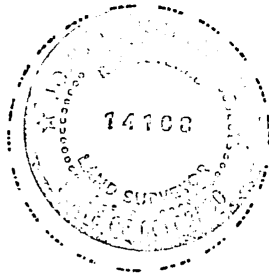
X = 2140929.67 ϕ 39°42'39.7736" ELEV. 5227.17
Y = 137985.77 λ 104°59'56.7285"

4. SKETCH SHOWING RELATIVE LOCATION OF MONUMENT AND REFERENCE POINTS. SHOW SUPPORTING AND/OR CONTRADICTORY EVIDENCE WHERE APPLICABLE.



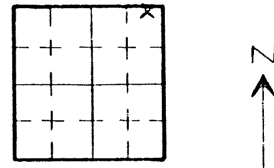
5. CERTIFICATION
This is to certify that I was in responsible charge of the surveying work described in this record and that to the best of my knowledge the information presented herein is true and correct.

Surveyor's Seal



Signature John D. Kuesch
Reg. No. 14108
Date 7/27/83

6. LOCATION DIAGRAM



SCALE 1" = 1 Mile
• Location of Monument

*(Do not fill in)

Accepted for Filing

State Board of Registration for Professional Engineers and Land Surveyors:

By _____
Date _____

RECEIVED AT OFFICE OF THE COUNTY CLERK;
_____ COUNTY

By _____
Date _____

Record to be filed by Index Reference Number, numerically, then alphabetically, under appropriate Township, Range, and Meridian.

7. SEC. 16, T 9S, R 60W, 6 P.M

8. COUNTY _____ INDEX REF NO _____
COUNTY _____ INDEX REF NO _____

COLORADO LAND SURVEY MONUMENT RECORD
REPORT ONE MONUMENT ONLY ON THIS FORM

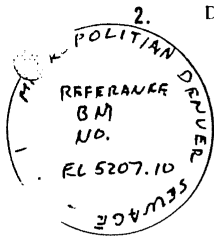
#23

All items to be filled in by the Land Surveyor using black ink or typewriter. (Except)*

1. TYPE OF MONUMENT
(Check one)

- Section Corner
- Quarter Corner

- Bench mark
- Other URBAN DRAINAGE CONTROL POINT



2. DESCRIPTION OF EVIDENCE FOUND, AND ORIGINAL RECORD CALL, IF KNOWN
FOUND 3/4" BRASS CAP IN THE NORTH EAST CORNER OF A SEWAGE COLLECTOR BOX NEAR THE INTERSECTION OF 5TH AND YUMA STREETS IN DENVER

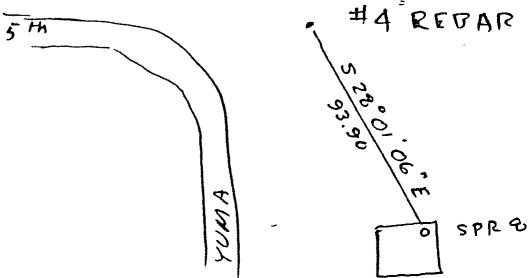
3. DESCRIPTION OF MONUMENT AND/OR ACCESSORIES ESTABLISHED BY YOU TO PERPETUATE THE LOCATION OF THIS POINT. GIVE YOUR ESTIMATE OF POSITIONAL TOLERANCE IF NOT ORIGINAL, UNDISTURBED MONUMENT.

Date of Field Work 4/20/83

(SPR 9)

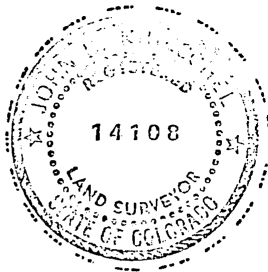
COLO NORTH ZONE
 X = 2136498.15 ϕ 79° 43' 24.9170" ELEV.
 Y = 142528.57 λ 105° 00' 53.1033" 5207.41

4. SKETCH SHOWING RELATIVE LOCATION OF MONUMENT AND REFERENCE POINTS SHOW SUPPORTING AND/OR CONTRADICTORY EVIDENCE WHERE APPLICABLE.



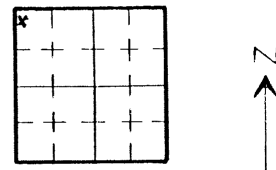
5. CERTIFICATION
This is to certify that I was in responsible charge of the surveying work described in this record and that to the best of my knowledge the information presented herein is true and correct.

Surveyor's Seal



Signature John P. Marshall
 Reg. No. 14108
 Date 7/27/83

6. LOCATION DIAGRAM



(Do not fill in)

Accepted for Filing

State Board of Registration for Professional Engineers and Land Surveyors:

By _____

Date _____

RECEIVED AT OFFICE OF THE COUNTY CLERK:

_____ COUNTY

By _____

Date _____

Record to be filed by Index Reference Number, numerically, then alphabetically, under appropriate Township, Range, and Meridian.

SCALE 1" = 1 Mile
 • Location of Monument

7. SEC. 9, T 4S, R 68W, 6 P.M.

8. COUNTY _____ INDEX REF NO _____
 COUNTY _____ INDEX REF NO _____

COLORADO LAND SURVEY MONUMENT RECORD
REPORT ONE MONUMENT ONLY ON THIS FORM

#24

All items to be filled in by the Land Surveyor using black ink or typewriter. (Except)*

1. TYPE OF MONUMENT Section Corner Bench mark
 (Check one) Quarter Corner Other URBAN DRAINAGE CONTROL POINT

2. DESCRIPTION OF EVIDENCE FOUND, AND ORIGINAL RECORD CALL, IF KNOWN

3. DESCRIPTION OF MONUMENT AND/OR ACCESSORIES ESTABLISHED BY YOU TO PERPETUATE THE LOCATION OF THIS POINT. GIVE YOUR ESTIMATE OF POSITIONAL TOLERANCE IF NOT ORIGINAL, UNDISTURBED MONUMENT.

Date of Field Work 4/20/83

SET 2 1/4" BRASS CAP IN THE UPSTREAM LEFT CORNER OF THE BRIDGE OVER THE PLATTE RIVER ON 7 14th ST
COLD NORTH ZONE

X = 2135723.64

ϕ 39°44'23.2858"

ELEV.

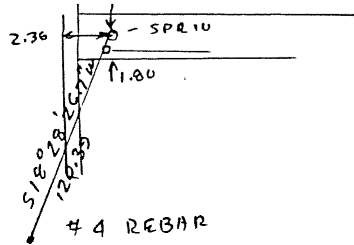
Y = 148430.82

λ 105°01'02.6042"

5196.41



4. SKETCH SHOWING RELATIVE LOCATION OF MONUMENT AND REFERENCE POINTS SHOW SUPPORTING AND/OR CONTRADICTORY EVIDENCE WHERE APPLICABLE.



5. CERTIFICATION

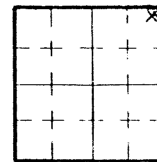
This is to certify that I was in responsible charge of the surveying work described in this record and that to the best of my knowledge the information presented herein is true and correct.

Surveyor's Seal



Signature John D. Kraschel
Reg. No. 14108
Date 7/27/83

6. LOCATION DIAGRAM



SCALE 1" = 1 Mile
• Location of Monument

(Do not fill in)

Accepted for Filing

State Board of Registration for Professional Engineers and Land Surveyors:

By _____

Date _____

RECEIVED AT OFFICE OF THE COUNTY CLERK,
_____ COUNTY

By _____

Date _____

Record to be filed by Index Reference Number, numerically, then alphabetically, under appropriate Township, Range, and Meridian.

7. SEC. 5, T 4S, R 68W, 6 P.M.

8. COUNTY _____ INDEX REF NO _____
COUNTY _____ INDEX REF NO _____

COLORADO LAND SURVEY MONUMENT RECORD
REPORT ONE MONUMENT ONLY ON THIS FORM

#125

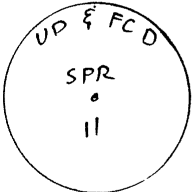
All items to be filled in by the Land Surveyor using black ink or typewriter. (Except)*

1. TYPE OF MONUMENT Section Corner Bench mark
 (Check one) Quarter Corner Other URBAN DRAINAGE CONTROL POINT

2. DESCRIPTION OF EVIDENCE FOUND, AND ORIGINAL RECORD CALL, IF KNOWN

3. DESCRIPTION OF MONUMENT AND/OR ACCESSORIES ESTABLISHED BY YOU TO PERPETUATE THE LOCATION OF THIS POINT. GIVE YOUR ESTIMATE OF POSITIONAL TOLERANCE IF NOT ORIGINAL, UNDISTURBED MONUMENT.

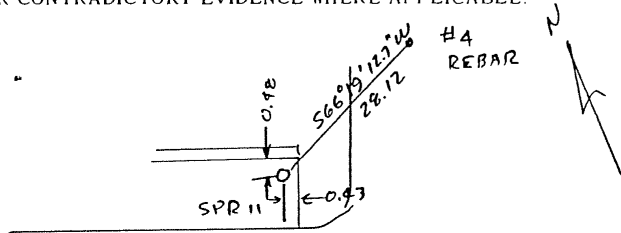
Date of Field Work 4/19/83



SET 2 1/4" BRASS CAP IN THE DOWNSTREAM RIGHT CORNER OF THE BRIDGE OVER THE PLATE RIVER ON 15TH STREET NEAR GRINNELL STREET.

COLD. NORTH ZONE
 X = 2138670.74 ϕ 39°45'18.6626" ELEV. 5187.90
 Y = 154020.35 λ 105°00'24.4791"

4. SKETCH SHOWING RELATIVE LOCATION OF MONUMENT AND REFERENCE POINTS SHOW SUPPORTING AND/OR CONTRADICTORY EVIDENCE WHERE APPLICABLE.



5. CERTIFICATION

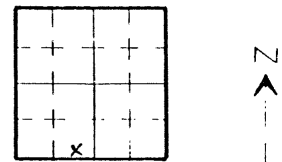
This is to certify that I was in responsible charge of the surveying work described in this record and that to the best of my knowledge the information presented herein is true and correct.

Surveyor's Seal



Signature John D. Krenkel
 Reg. No. 14108
 Date 7/27/83

6. LOCATION DIAGRAM



SCALE 1" = 1 Mile
 • Location of Monument

(Do not fill in)

Accepted for Filing

State Board of Registration for Professional Engineers and Land Surveyors:

By _____
 Date _____

RECEIVED AT OFFICE OF THE COUNTY CLERK,
 _____ COUNTY

By _____
 Date _____

Record to be filed by Index Reference Number, numerically, then alphabetically, under appropriate Township, Range, and Meridian.

7. SEC. 2E, T 3S, R. 60W, C P M

8. COUNTY _____ INDEX REF NO _____
 COUNTY _____ INDEX REF NO _____

COLORADO LAND SURVEY MONUMENT RECORD
REPORT ONE MONUMENT ONLY ON THIS FORM

#26

All items to be filled in by the Land Surveyor using black ink or typewriter. (Except)*

1. TYPE OF MONUMENT
(Check one)

Section Corner
 Quarter Corner

Bench mark
 Other URBAN DRAINAGE CONTROL POINT

2. DESCRIPTION OF EVIDENCE FOUND, AND ORIGINAL RECORD CALL, IF KNOWN

3. DESCRIPTION OF MONUMENT AND/OR ACCESSORIES ESTABLISHED BY YOU TO PERPETUATE THE LOCATION OF THIS POINT. GIVE YOUR ESTIMATE OF POSITIONAL TOLERANCE IF NOT ORIGINAL, UNDISTURBED MONUMENT.

Date of Field Work 4/19/83

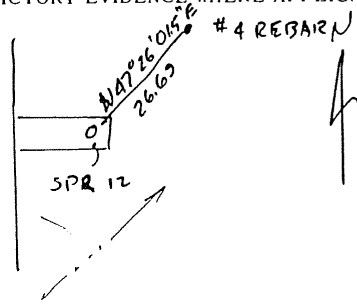
SET 2 1/4" BRASS CAP ON THE DOWNSTREAM LEFT END OF THE 23 ST VIA DUCT OVER THE PLATTE RIVER

UD & FCD
SPR
12

COLD NORTH ZONE

X = 2142185.91 ϕ 39° 45' 50.8662" ELEV.
Y = 157328.72 λ 104° 59' 39.2328" 5176.16

4. SKETCH SHOWING RELATIVE LOCATION OF MONUMENT AND REFERENCE POINTS SHOW SUPPORTING AND/OR CONTRADICTORY EVIDENCE WHERE APPLICABLE.



5. CERTIFICATION

This is to certify that I was in responsible charge of the surveying work described in this record and that to the best of my knowledge the information presented herein is true and correct.

Surveyor's Seal

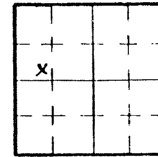
Signature John D. Kressel

Reg. No 14108

Date 7/27/83



6. LOCATION DIAGRAM



*(Do not fill in)

Accepted for Filing

State Board of Registration for Professional Engineers and Land Surveyors:

By _____

Date _____

RECEIVED AT OFFICE OF THE COUNTY CLERK;

_____ COUNTY

By _____

Date _____

Record to be filed by Index Reference Number, numerically, then alphabetically, under appropriate Township, Range, and Meridian.

SCALE 1" = 1 Mile

• Location of Monument

7. SEC. 27, T 33, R 68W, 6 P.M.

8. COUNTY _____ INDEX REF NO _____

COUNTY _____ INDEX REF NO _____

COLORADO LAND SURVEY MONUMENT RECORD
REPORT ONE MONUMENT ONLY ON THIS FORM

27

All items to be filled in by the Land Surveyor using black ink or typewriter. (Except)*

1. TYPE OF MONUMENT (Check one) Section Corner Bench mark Other URBAN DRAINAGE CONTROL POINT
 Quarter Corner

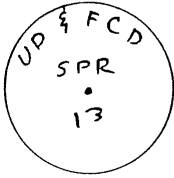
2. DESCRIPTION OF EVIDENCE FOUND, AND ORIGINAL RECORD CALL, IF KNOWN

3. DESCRIPTION OF MONUMENT AND/OR ACCESSORIES ESTABLISHED BY YOU TO PERPETUATE THE LOCATION OF THIS POINT. GIVE YOUR ESTIMATE OF POSITIONAL TOLERANCE IF NOT ORIGINAL, UNDISTURBED MONUMENT.

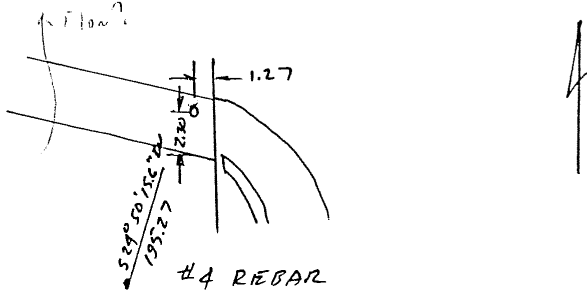
Date of Field Work 4/19/83

SET 2 1/4" BRASS CAP IN THE SIDE WALK AT THE UPSTREAM RIGHT CORNER OF THE BRIDGE OVER THE PLATTE RIVER ON 33RD STREET NEAR ARKINS COURT
COLD NORTH ZONE

X = 2146817.42 ϕ 39° 46' 29.8697" ELEV. 5159.63
Y = 161302.12 λ 104° 58' 39.6255"

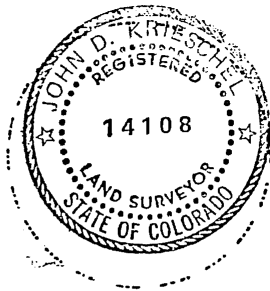


4. SKETCH SHOWING RELATIVE LOCATION OF MONUMENT AND REFERENCE POINTS. SHOW SUPPORTING AND/OR CONTRADICTORY EVIDENCE WHERE APPLICABLE.



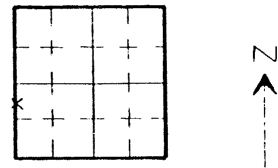
5. CERTIFICATION
This is to certify that I was in responsible charge of the surveying work described in this record and that to the best of my knowledge the information presented herein is true and correct.

Surveyor's Seal



Signature: John D. Kruestel
Reg. No. 14108
Date 7/27/83

6. LOCATION DIAGRAM



(Do not fill in)

Accepted for Filing

State Board of Registration for Professional Engineers and Land Surveyors:

By: _____

Date: _____

RECEIVED AT OFFICE OF THE COUNTY CLERK;

_____ COUNTY

By: _____

Date: _____

Record to be filed by Index Reference Number, numerically, then alphabetically, under appropriate Township, Range, and Meridian.

SCALE 1" = 1 Mile
• Location of Monument

7. SEC. 23, T. 35, R. 68 W, 6 P.M.

8. COUNTY _____ INDEX REF NO _____
COUNTY _____ INDEX REF NO _____

COLORADO LAND SURVEY MONUMENT RECORD
REPORT ONE MONUMENT ONLY ON THIS FORM

28
URBAN DRAINAGE CONTROL POINT

All items to be filled in by the Land Surveyor using black ink or typewriter. (Except)*

1. TYPE OF MONUMENT (Check one) Section Corner Bench mark Other URBAN DRAINAGE CONTROL POINT
 Quarter Corner

2. DESCRIPTION OF EVIDENCE FOUND, AND ORIGINAL RECORD CALL, IF KNOWN

3. DESCRIPTION OF MONUMENT AND/OR ACCESSORIES ESTABLISHED BY YOU TO PERPETUATE THE LOCATION OF THIS POINT. GIVE YOUR ESTIMATE OF POSITIONAL TOLERANCE IF NOT ORIGINAL, UNDISTURBED MONUMENT.

Date of Field Work 4/25/83

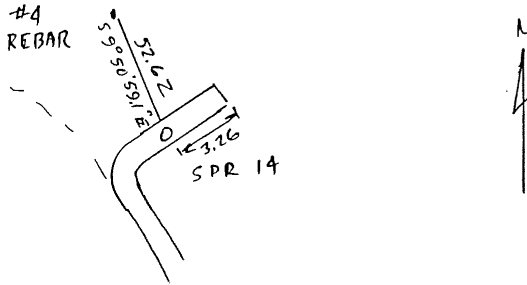
UD & FCD
SPR
14

SET 2 1/4" BRASS CAP ON THE WING WALL ON THE DOWNSTREAM LEFT WING WALL OF THE BRIDGE OVER THE PLATTE RIVER AT 58TH AND YORK

COLD NORTH ZONE

X = 2151973.01 ϕ 39°48'06.4578" ELEV. 5130.66
Y = 171106.38 λ 104°57'32.8306"

4. SKETCH SHOWING RELATIVE LOCATION OF MONUMENT AND REFERENCE POINTS SHOW SUPPORTING AND/OR CONTRADICTIONARY EVIDENCE WHERE APPLICABLE.



5. CERTIFICATION

This is to certify that I was in responsible charge of the surveying work described in this record and that to the best of my knowledge the information presented herein is true and correct

Surveyor's Seal

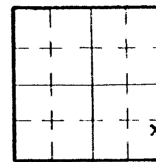


Signature John D. Kuff

Reg. No 14108

Date 7/27/83

6. LOCATION DIAGRAM



SCALE 1" = 1 Mile
• Location of Monument

(Do not fill in)

Accepted for Filing

State Board of Registration for Professional Engineers and Land Surveyors:

By _____

Date _____

RECEIVED AT OFFICE OF THE COUNTY CLERK;

_____ COUNTY

By _____

Date _____

Record to be filed by Index Reference Number, numerically, then alphabetically, under appropriate Township, Range, and Meridian.

7. SEC. 11 T. 25 R. 69W, 6 P.M.

8. COUNTY _____ INDEX REF. NO. _____
COUNTY _____ INDEX REF. NO. _____

COLORADO LAND SURVEY MONUMENT RECORD
REPORT ONE MONUMENT ONLY ON THIS FORM

All items to be filled in by the Land Surveyor using black ink or typewriter. (Except)*

#29

1. TYPE OF MONUMENT (Check one) Section Corner Bench mark Other URBAN DRAINAGE CONTROL POINT
2. DESCRIPTION OF EVIDENCE FOUND, AND ORIGINAL RECORD CALL, IF KNOWN

3. DESCRIPTION OF MONUMENT AND/OR ACCESSORIES ESTABLISHED BY YOU TO PERPETUATE THE LOCATION OF THIS POINT. GIVE YOUR ESTIMATE OF POSITIONAL TOLERANCE IF NOT ORIGINAL, UNDISTURBED MONUMENT.

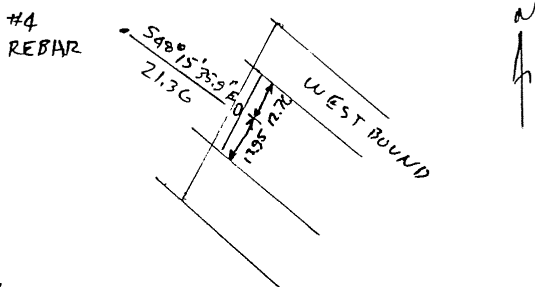
Date of Field Work 4/25/83

UD & F.C.D.
SPR
15

SET 2 1/4" BRASS CAP ON THE HEADWALL BETWEEN THE EAST AND WEST BOUND LANES OF I 270 BRIDGE OVER THE PLATTE RIVER ON THE WEST END

COLD. NORTH ZONE
X = 2154097.99 ϕ 39°48'52.0124" ELEV. 5125.15
Y = 175728.91 λ 104°57'05.2384"

4. SKETCH SHOWING RELATIVE LOCATION OF MONUMENT AND REFERENCE POINTS SHOW SUPPORTING AND/OR CONTRADICTORY EVIDENCE WHERE APPLICABLE.



5. CERTIFICATION
This is to certify that I was in responsible charge of the surveying work described in this record and that to the best of my knowledge the information presented herein is true and correct.

Surveyor's Seal

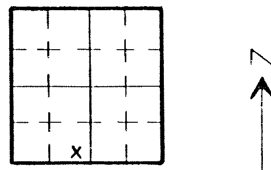
Signature John D. Krieger

Reg. No. 14108

Date 7/27/83



6. LOCATION DIAGRAM



(Do not fill in)

Accepted for Filing

State Board of Registration for Professional Engineers and Land Surveyors:

By _____

Date _____

RECEIVED AT OFFICE OF THE COUNTY CLERK;

_____ COUNTY

By _____

Date _____

Record to be filed by Index Reference Number, numerically, then alphabetically, under appropriate Township, Range, and Meridian.

SCALE 1" = 1 Mile
• Location of Monument

7. SEC. 1, T35, R. 69W, 6 P.M.

8. COUNTY _____ INDEX REF NO _____
COUNTY _____ INDEX REF NO _____

COLORADO LAND SURVEY MONUMENT RECORD
REPORT ONE MONUMENT ONLY ON THIS FORM

30

All items to be filled in by the Land Surveyor using black ink or typewriter. (Except)*

1. TYPE OF MONUMENT (Check one) Section Corner Bench mark Other URBAN DRAINAGE CONTROL POINT
 Quarter Corner

2. DESCRIPTION OF EVIDENCE FOUND, AND ORIGINAL RECORD CALL, IF KNOWN
 FOUND 3/4" BRASS CAP ON THE SIDE WALK AT THE DOWN STREAM RIGHT CORNER OF THE BRIDGE OVER THE PLATTE RIVER ON 74TH AVE



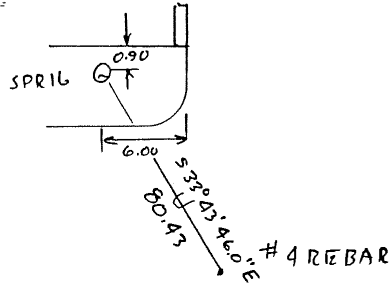
3. DESCRIPTION OF MONUMENT AND/OR ACCESSORIES ESTABLISHED BY YOU TO PERPETUATE THE LOCATION OF THIS POINT. GIVE YOUR ESTIMATE OF POSITIONAL TOLERANCE IF NOT ORIGINAL, UNDISTURBED MONUMENT.
 Date of Field Work 4/25/83

(SPR 16)

COLO. NORTH ZONE

X = 2155337.28 ϕ 39° 49' 51.2260" ELEV. 5116.96
 Y = 181728.20 λ 104° 56' 48.8778"

4. SKETCH SHOWING RELATIVE LOCATION OF MONUMENT AND REFERENCE POINTS SHOW SUPPORTING AND/OR CONTRADICTORY EVIDENCE WHERE APPLICABLE.



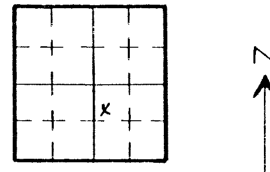
5. CERTIFICATION
 This is to certify that I was in responsible charge of the surveying work described in this record and that to the best of my knowledge the information presented herein is true and correct.

Surveyor's Seal



Signature John D. Knudsen
 Reg. No. 14108
 Date 7/27/83

6. LOCATION DIAGRAM



SCALE 1" = 1 Mile
 • Location of Monument

(Do not fill in)

Accepted for Filing

State Board of Registration for Professional Engineers and Land Surveyors:

By _____
 Date _____

RECEIVED AT OFFICE OF THE COUNTY CLERK;
 _____ COUNTY

By _____
 Date _____

Record to be filed by Index Reference Number, numerically, then alphabetically, under appropriate Township, Range, and Meridian.

7. SEC. 36, T 25, R 68W, 6 P.M.

8. COUNTY _____ INDEX REF NO _____
 COUNTY _____ INDEX REF NO _____

COLORADO LAND SURVEY MONUMENT RECORD

REPORT ONE MONUMENT ONLY ON THIS FORM

#31

All items to be filled in by the Land Surveyor using black ink or typewriter. (Except)*

1. TYPE OF MONUMENT (Check one) Section Corner Bench mark Other URBAN DRAINAGE CONTROL POINT
 Quarter Corner

2. DESCRIPTION OF EVIDENCE FOUND, AND ORIGINAL RECORD CALL, IF KNOWN
 FOUND HIGHWAY DEPARTMENT BRASS CAP ON THE SIDE WALK AT THE UPSTREAM LEFT CORNER OF THE BRIDGE OVER THE PLATTE RIVER ON 88th AVE.

3. DESCRIPTION OF MONUMENT AND/OR ACCESSORIES ESTABLISHED BY YOU TO PERPETUATE THE LOCATION OF THIS POINT. GIVE YOUR ESTIMATE OF POSITIONAL TOLERANCE IF NOT ORIGINAL, UNDISTURBED MONUMENT.

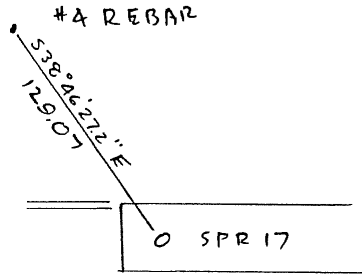
(SPR 17)

Date of Field Work 5/6/83

COLO NORTH ZONE

X = 2157825.57 ϕ 39° 51' 21.6275" ELEV. 5084.91
 Y = 190891.23 λ 104° 56' 16.2390

4. SKETCH SHOWING RELATIVE LOCATION OF MONUMENT AND REFERENCE POINTS. SHOW SUPPORTING AND/OR CONTRADICTORY EVIDENCE WHERE APPLICABLE.



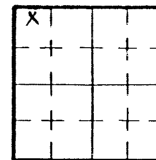
5. CERTIFICATION
 This is to certify that I was in responsible charge of the surveying work described in this record and that to the best of my knowledge the information presented herein is true and correct.

Surveyor's Seal



Signature John D. Kriesel
 Reg. No. 14108
 Date 7/27/83

6. LOCATION DIAGRAM



(Do not fill in)

Accepted for Filing

State Board of Registration for Professional Engineers and Land Surveyors:

By _____
 Date _____

RECEIVED AT OFFICE OF THE COUNTY CLERK;
 _____ COUNTY

By _____
 Date _____

Record to be filed by Index Reference Number, numerically, then alphabetically, under appropriate Township, Range, and Meridian.

SCALE 1" = 1 Mile
 • Location of Monument

7. SEC. 30, T 25, R 67W, 6 P.M.

8. COUNTY _____ INDEX REF NO _____
 COUNTY _____ INDEX REF NO _____

COLORADO LAND SURVEY MONUMENT RECORD
REPORT ONE MONUMENT ONLY ON THIS FORM

#32

All items to be filled in by the Land Surveyor using black ink or typewriter. (Except)*

1. TYPE OF MONUMENT (Check one) Section Corner Bench mark Other URBAN DRAINAGE CONTROL POINT
2. DESCRIPTION OF EVIDENCE FOUND, AND ORIGINAL RECORD CALL, IF KNOWN

UD & FCD
SPR
18

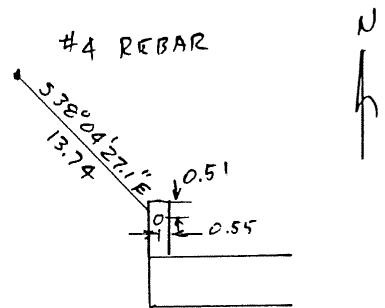
3. DESCRIPTION OF MONUMENT AND/OR ACCESSORIES ESTABLISHED BY YOU TO PERPETUATE THE LOCATION OF THIS POINT. GIVE YOUR ESTIMATE OF POSITIONAL TOLERANCE IF NOT ORIGINAL, UNDISTURBED MONUMENT.

Date of Field Work 5/6/83

SET 2 1/4" BRASS CAP IN THE WING WALL ON THE DOWNSTREAM LEFT CORNER OF THE BRIDGE OVER THE PLATTE RIVER ON 104th AVE.
COLO NORTH ZONE

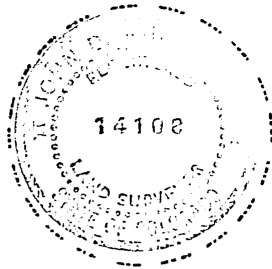
X = 2167826.45 φ 39°53'07.1559" ELEV. 5052.46
Y = 201634.71 λ 104°54'07.0747

4. SKETCH SHOWING RELATIVE LOCATION OF MONUMENT AND REFERENCE POINTS. SHOW SUPPORTING AND/OR CONTRADICTORY EVIDENCE WHERE APPLICABLE.



5. CERTIFICATION
This is to certify that I was in responsible charge of the surveying work described in this record and that to the best of my knowledge the information presented herein is true and correct.

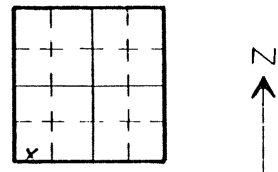
Surveyor's Seal



Signature John D. Kneudler

Reg. No. 14108
Date 7/27/83

6. LOCATION DIAGRAM



SCALE 1" = 1 Mile
• Location of Monument

(Do not fill in)

Accepted for Filing

State Board of Registration for Professional Engineers and Land Surveyors:

By: _____
Date: _____

RECEIVED AT OFFICE OF THE COUNTY CLERK;
_____ COUNTY

By: _____
Date: _____

Record to be filed by Index Reference Number, numerically, then alphabetically, under appropriate Township, Range, and Meridian.

7. SEC. 9, T. 25, R. 67W, 6 P.M.

8. COUNTY _____ INDEX REF NO _____
COUNTY _____ INDEX REF NO _____

COLORADO LAND SURVEY MONUMENT RECORD
REPORT ONE MONUMENT ONLY ON THIS FORM

#33

All items to be filled in by the Land Surveyor using black ink or typewriter. (Except)*

1. TYPE OF MONUMENT (Check one) Section Corner Bench mark Other URBAN DRAINAGE CONTROL POINT
 Quarter Corner

2. DESCRIPTION OF EVIDENCE FOUND, AND ORIGINAL RECORD CALL, IF KNOWN
 FOUND 2 1/4" BRASS CAP IN THE WING WALL AT THE UPSTREAM LEFT CORNER OF THE BRIDGE OVER THE PLATTE RIVER ON HENDERSON ROAD

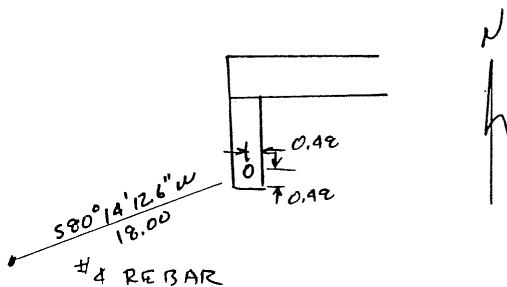


3. DESCRIPTION OF MONUMENT AND/OR ACCESSORIES ESTABLISHED BY YOU TO PERPETUATE THE LOCATION OF THIS POINT. GIVE YOUR ESTIMATE OF POSITIONAL TOLERANCE IF NOT ORIGINAL, UNDISTURBED MONUMENT.
 Date of Field Work 5/7/83

(SPR 19)

COLO NORTH ZONE
 X = 2177418.25 ϕ 39° 55' 22.6829" ELEV. 5019.45
 Y = 215414.84 λ 104° 51' 40.4850"

4. SKETCH SHOWING RELATIVE LOCATION OF MONUMENT AND REFERENCE POINTS. SHOW SUPPORTING AND/OR CONTRADICTORY EVIDENCE WHERE APPLICABLE.



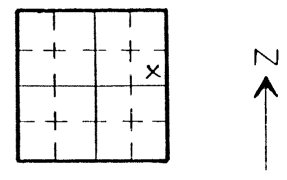
5. CERTIFICATION
 This is to certify that I was in responsible charge of the surveying work described in this record and that to the best of my knowledge the information presented herein is true and correct.

Surveyor's Seal



Signature John D. Kuenkel
 Reg. No. 14108
 Date 7/27/83

6. LOCATION DIAGRAM



(Do not fill in)

Accepted for Filing

State Board of Registration for Professional Engineers and Land Surveyors:

By _____
 Date _____

RECEIVED AT OFFICE OF THE COUNTY CLERK;
 _____ COUNTY

By _____
 Date _____

Record to be filed by Index Reference Number, numerically, then alphabetically, under appropriate Township, Range, and Meridian.

SCALE 1" = 1 Mile
 • Location of Monument

7. SEC. 34, T 15, R 67W, 6 P.M.

8. COUNTY _____ INDEX REF NO _____
 COUNTY _____ INDEX REF. NO. _____

COLORADO LAND SURVEY MONUMENT RECORD
REPORT ONE MONUMENT ONLY ON THIS FORM

34

All items to be filled in by the Land Surveyor using black ink or typewriter. (Except)*

1. TYPE OF MONUMENT (Check one) Section Corner Bench mark Quarter Corner Other URBAN DRAINAGE CONTROL POINT

2. DESCRIPTION OF EVIDENCE FOUND, AND ORIGINAL RECORD CALL, IF KNOWN

3. DESCRIPTION OF MONUMENT AND/OR ACCESSORIES ESTABLISHED BY YOU TO PERPETUATE THE LOCATION OF THIS POINT. GIVE YOUR ESTIMATE OF POSITIONAL TOLERANCE IF NOT ORIGINAL, UNDISTURBED MONUMENT.

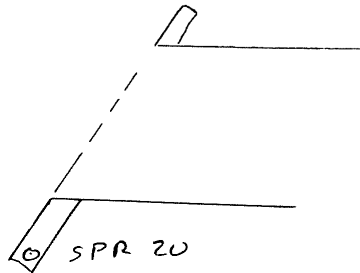
Date of Field Work 5/8/83

UD & PCD
SPR
20

SET 2 1/4" BRASS CAP IN THE WING WALL ON THE UPSTREAM LEFT CORNER OF THE BRIDGE OVER THE PLATTE RIVER ON COLD. HIGHWAY # 7. COLD. NORTH ZONE

X = 2187141.69 ϕ 39° 59' 13.0527" ELEV. 4967.38
Y = 238796.73 λ 104° 49' 55.7119"

4. SKETCH SHOWING RELATIVE LOCATION OF MONUMENT AND REFERENCE POINTS. SHOW SUPPORTING AND/OR CONTRADICTORY EVIDENCE WHERE APPLICABLE.



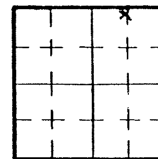
5. CERTIFICATION This is to certify that I was in responsible charge of the surveying work described in this record and that to the best of my knowledge the information presented herein is true and correct.

Surveyor's Seal



Signature John D. Kussell
Reg. No. 14108
Date 7/27/83

6. LOCATION DIAGRAM



SCALE 1" = 1 Mile
• Location of Monument

*(Do not fill in)

Accepted for Filing

State Board of Registration for Professional Engineers and Land Surveyors:

By _____

Date _____

RECEIVED AT OFFICE OF THE COUNTY CLERK;

_____ COUNTY

By _____

Date _____

Record to be filed by Index Reference Number, numerically, then alphabetically, under appropriate Township, Range, and Meridian.

7. SEC. 12, T 15, R 67W, 6 P.M.

8. COUNTY _____ INDEX REF NO _____
COUNTY _____ INDEX REF NO _____

COLORADO LAND SURVEY MONUMENT RECORD
REPORT ONE MONUMENT ONLY ON THIS FORM

#35

All items to be filled in by the Land Surveyor using black ink or typewriter. (Except)*

1. TYPE OF MONUMENT
(Check one)

- Section Corner
- Quarter Corner

- Bench mark
- Other URBAN DRAINAGE CONTROL POINT

2. DESCRIPTION OF EVIDENCE FOUND, AND ORIGINAL RECORD CALL, IF KNOWN

*SUPERSEDED BY
18 SPR-21
8/19/89
for Form 244*

3. DESCRIPTION OF MONUMENT AND/OR ACCESSORIES ESTABLISHED BY YOU TO PERPETUATE THE LOCATION OF THIS POINT. GIVE YOUR ESTIMATE OF POSITIONAL TOLERANCE IF NOT ORIGINAL, UNDISTURBED MONUMENT.

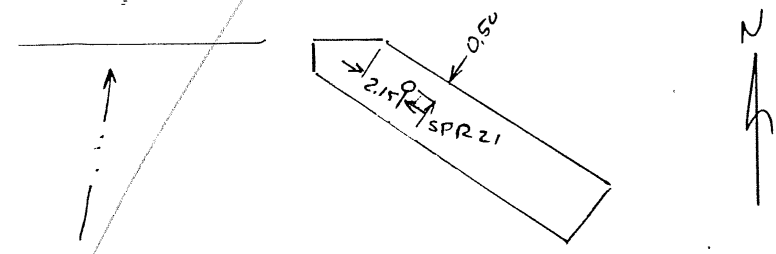
Date of Field Work 5/8/83

VD & FC D
SPR
21

SET 2 1/4" BRASS CAP IN THE WING WALL ON THE UPSTREAM RIGHT CORNER OF THE BRIDGE OVER THE PLATTE RIVER ON 168TH AVE

COLO NORTH ZONE
X = 2188760.15 ϕ 40°-00'-01.3877" ELEV. 4954.00
Y = 243699.91 λ 104°-49'-34.4410"

4. SKETCH SHOWING RELATIVE LOCATION OF MONUMENT AND REFERENCE POINTS. SHOW SUPPORTING AND/OR CONTRADICTORY EVIDENCE WHERE APPLICABLE.



5. CERTIFICATION

This is to certify that I was in responsible charge of the surveying work described in this record and that to the best of my knowledge the information presented herein is true and correct.

Surveyor's Seal

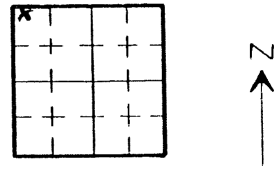
Signature John D. Krieschel

Reg. No. 14108

Date 7/7/83



6. LOCATION DIAGRAM



(Do not fill in)

Accepted for Filing

State Board of Registration for Professional Engineers and Land Surveyors:

By: _____

Date: _____

RECEIVED AT OFFICE OF THE COUNTY CLERK;

_____ COUNTY

By: _____

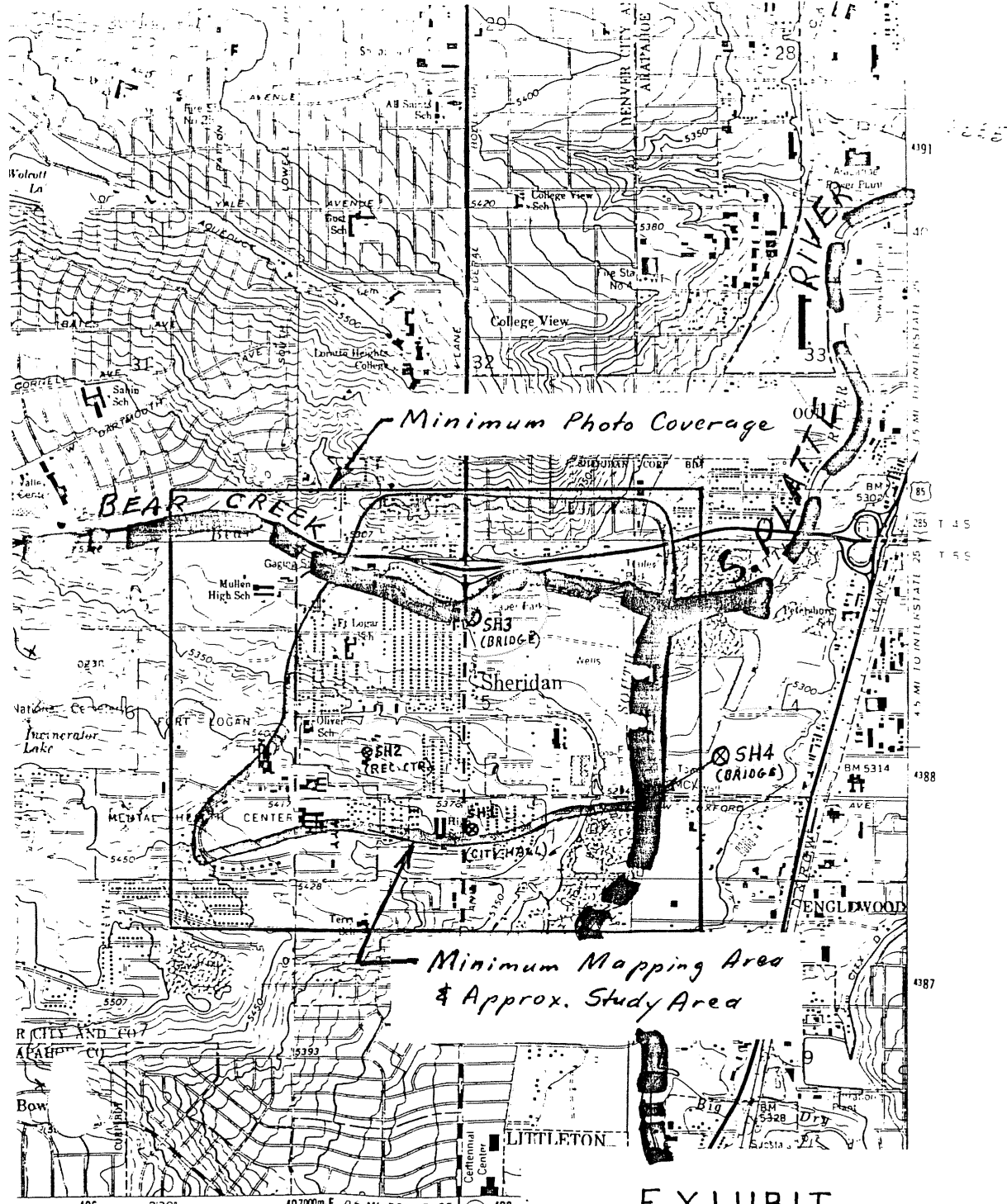
Date: _____

Record to be filed by Index Reference Number, numerically, then alphabetically, under appropriate Township, Range, and Meridian.

SCALE 1" = 1 Mile
• Location of Monument

7. SEC. 6, T 1 S, R 66 W, 6 P.M.

8. COUNTY _____ INDEX REF NO. _____
COUNTY _____ INDEX REF NO. _____



LEGEND
 ⊗ PERMANENT
 BRASS CAP
 MONUMENT

EXHIBIT
 Sheridan & Vicinity
 Drainage Study
 Jan 1983

COLORADO LAND SURVEY MONUMENT RECORD

REPORT ONE MONUMENT ONLY ON THIS FORM

#36

All items to be filled in by the Land Surveyor using black ink or typewriter. (Except)*

1. TYPE OF MONUMENT Section Corner Bench mark
 (Check one) Quarter Corner Other _____

2. DESCRIPTION OF EVIDENCE FOUND, AND ORIGINAL RECORD CALL, IF KNOWN

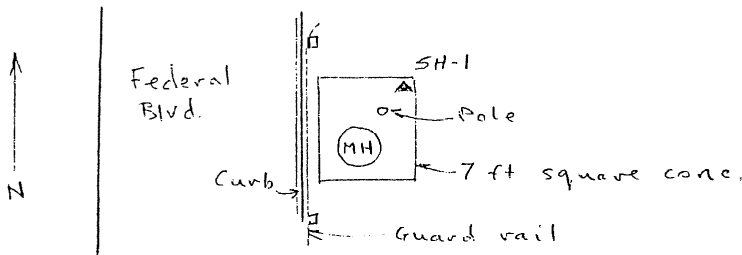
Scale factor .9999837
 Sea Level " .9997451
 Combined " .9997288

3. DESCRIPTION OF MONUMENT AND/OR ACCESSORIES ESTABLISHED BY YOU TO PERPETUATE THE LOCATION OF THIS POINT. GIVE YOUR ESTIMATE OF POSITIONAL TOLERANCE IF NOT ORIGINAL, UNDISTURBED MONUMENT.

Date of Field Work April 5, 1983
 SH-1 Set 2 1/4" Brass Cap in NE Cor of 2 ft high concrete housing for manhole at East side Federal Blvd. approx 650 ft. South of Oxford Av.
 N - 658,687.819 } Colo. State Plane, Central zone
 E - 2,134,459.898 } Modified to 5500' elev.
 ELEV 5393.78 - USGS MSL datum



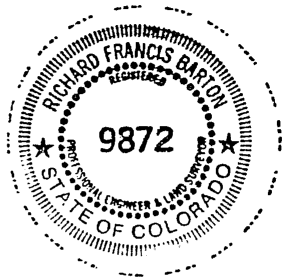
4. SKETCH SHOWING RELATIVE LOCATION OF MONUMENT AND REFERENCE POINTS. SHOW SUPPORTING AND/OR CONTRADICTORY EVIDENCE WHERE APPLICABLE.



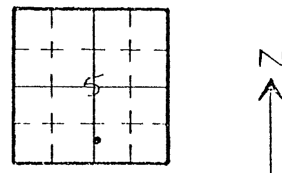
5. CERTIFICATION This is to certify that I was in responsible charge of the surveying work described in this record and that to the best of my knowledge the information presented herein is true and correct.

Surveyor's Seal

Signature Richard F. Barton
 Reg. No. 9872
 Date April 20, 1983



6. LOCATION DIAGRAM



SCALE 1" = 1 Mile
 • Location of Monument

(Do not fill in)

Accepted for Filing

State Board of Registration for Professional Engineers and Land Surveyors:

By _____

Date _____

RECEIVED AT OFFICE OF THE COUNTY CLERK,

_____ COUNTY

By _____

Date _____

Record to be filed by Index Reference Number, numerically, then alphabetically, under appropriate Township, Range, and Meridian.

7. SEC. 5, T 5 S, R 68 W, 6 P.M.

8. COUNTY AGUAS CALIENTES INDEX REF NO. 7-V-6
 COUNTY _____ INDEX REF. NO. _____

COLORADO LAND SURVEY MONUMENT RECORD

REPORT ONE MONUMENT ONLY ON THIS FORM

#37

All items to be filled in by the Land Surveyor using black ink or typewriter. (Except)*

- 1. TYPE OF MONUMENT Section Corner Bench mark
 (Check one) Quarter Corner Other _____

2. DESCRIPTION OF EVIDENCE FOUND, AND ORIGINAL RECORD CALL, IF KNOWN

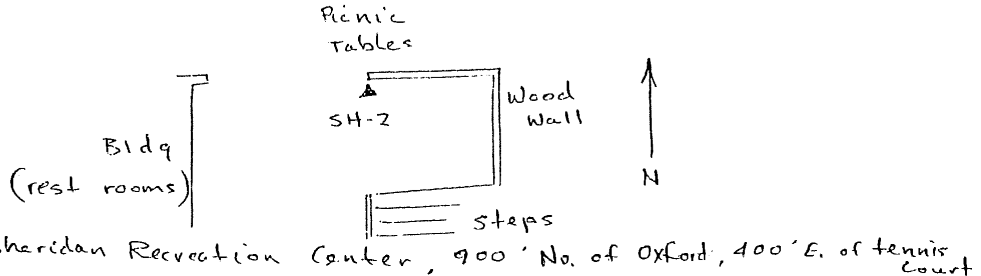
Scale factor .9999837
 Sea Level " .9997451
 Combined " .9997288

3. DESCRIPTION OF MONUMENT AND/OR ACCESSORIES ESTABLISHED BY YOU TO PERPETUATE THE LOCATION OF THIS POINT. GIVE YOUR ESTIMATE OF POSITIONAL TOLERANCE IF NOT ORIGINAL, UNDISTURBED MONUMENT.

SH-2 Set 2 1/2 " Brass Cap in concrete floor of picnic area at West end of low wooden wall 11 feet east of small building (rest rooms), at Sheridan recreation Center
 N - 660,227.245 } Colo. state plane, central zone
 E - 2,132,960.609 } Modified to 5500' elev.
 ELEV. 5369.86 - USGS MSL datum

JDPCD
-i-
SH-2

4. SKETCH SHOWING RELATIVE LOCATION OF MONUMENT AND REFERENCE POINTS. SHOW SUPPORTING AND/OR CONTRADICTORY EVIDENCE WHERE APPLICABLE.



5. CERTIFICATION This is to certify that I was in responsible charge of the surveying work described in this record and that to the best of my knowledge the information presented herein is true and correct.

Surveyor's Seal

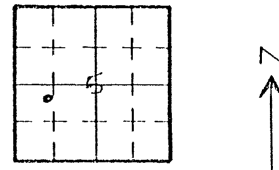
Signature Richard F. Barton

Reg. No. 9872

Date April 20, 1983



6. LOCATION DIAGRAM



(Do not fill in)

Accepted for Filing

State Board of Registration for Professional Engineers and Land Surveyors:

By _____

Date _____

RECEIVED AT OFFICE OF THE COUNTY CLERK:

_____ COUNTY

By _____

Date _____

Record to be filed by Index Reference Number, numerically, then alphabetically, under appropriate Township, Range, and Meridian.

SCALE 1" = 1 Mile
 • - Location of Monument

7. SEC. 5, T 5 S, R 68 W, 6 P.M.

8. COUNTY ARAPAHOE INDEX REF NO. 6-W
 COUNTY _____ INDEX REF. NO. _____

COLORADO LAND SURVEY MONUMENT RECORD
REPORT ONE MONUMENT ONLY ON THIS FORM

#38

All items to be filled in by the Land Surveyor using black ink or typewriter. (Except)*

1. TYPE OF MONUMENT Section Corner Bench mark
 (Check one) Quarter Corner Other _____
2. DESCRIPTION OF EVIDENCE FOUND, AND ORIGINAL RECORD CALL, IF KNOWN

Scale factor . 9999837
 Sea level " . 9997451
 Combined " . 9997288

3. DESCRIPTION OF MONUMENT AND/OR ACCESSORIES ESTABLISHED BY YOU TO PERPETUATE THE LOCATION OF THIS POINT. GIVE YOUR ESTIMATE OF POSITIONAL TOLERANCE IF NOT ORIGINAL, UNDISTURBED MONUMENT.

Date of Field Work April 5, 1983

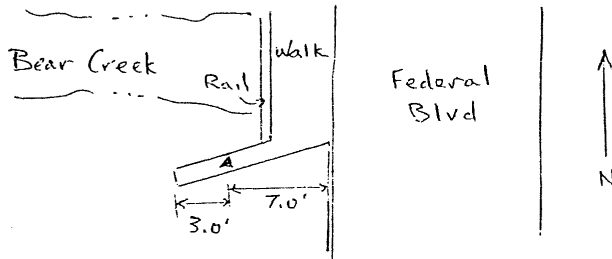
SH-3 Set 2 1/4" Brass Cap in SW wingwall of bridge at Federal Blvd. & Bear Creek.

N - 662,247.799 } Colo. State Plane, Central Zone
 E - 2,134,385.978 } Modified to 5500' elev.

ELEV. 5300.03 - USGS MSL datum



4. SKETCH SHOWING RELATIVE LOCATION OF MONUMENT AND REFERENCE POINTS. SHOW SUPPORTING AND/OR CONTRADICTORY EVIDENCE WHERE APPLICABLE.



5. CERTIFICATION
 This is to certify that I was in responsible charge of the surveying work described in this record and that to the best of my knowledge the information presented herein is true and correct.

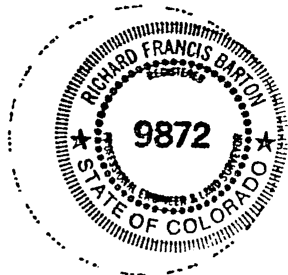
Surveyor's Seal

Signature

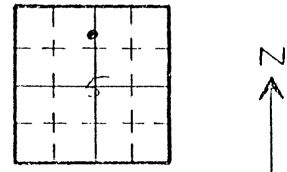
Richard F. Barton

Reg. No. 9872

Date April 20, 1983



6. LOCATION DIAGRAM



*(Do not fill in)

Accepted for Filing

State Board of Registration for Professional Engineers and Land Surveyors:

By _____

Date _____

RECEIVED AT OFFICE OF THE COUNTY CLERK;

_____ COUNTY

By _____

Date _____

Record to be filed by Index Reference Number, numerically, then alphabetically, under appropriate Township, Range, and Meridian.

SCALE 1" = 1 Mile

• - Location of Monument

7. SEC. 5, T 5S, R 68W, 6 P.M.

8. COUNTY ARAPAHOE INDEX REF. NO 7-Y

COUNTY _____ INDEX REF. NO _____

COLORADO LAND SURVEY MONUMENT RECORD

REPORT ONE MONUMENT ONLY ON THIS FORM

All items to be filled in by the Land Surveyor using black ink or typewriter. (Except)*

- 1. TYPE OF MONUMENT Section Corner Bench mark #39
- (Check one) Quarter Corner Other

2. DESCRIPTION OF EVIDENCE FOUND, AND ORIGINAL RECORD CALL, IF KNOWN

Scale factor .9999837
 Sea Level " .9997451
 Combined " .9997288

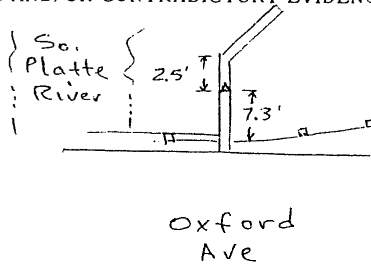
3. DESCRIPTION OF MONUMENT AND/OR ACCESSORIES ESTABLISHED BY YOU TO PERPETUATE THE LOCATION OF THIS POINT. GIVE YOUR ESTIMATE OF POSITIONAL TOLERANCE IF NOT ORIGINAL, UNDISTURBED MONUMENT.

Date of Field Work April 5 1983

SH-4 Brass Cap 2 1/4" set in NE wingwall of bridge at Oxford Ave & S. Platte River.
 N - 659,380.501 } Colo. State Plane, Central Zone
 E - 2137,388.923 } Modified to 5500' elev.
 ELEV 5292.14 - USGS MSL datum



4. SKETCH SHOWING RELATIVE LOCATION OF MONUMENT AND REFERENCE POINTS. SHOW SUPPORTING AND/OR CONTRADICTIONARY EVIDENCE WHERE APPLICABLE.



5. CERTIFICATION

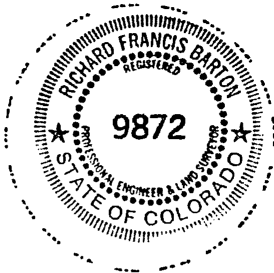
This is to certify that I was in responsible charge of the surveying work described in this record and that to the best of my knowledge the information presented herein is true and correct.

Surveyor's Seal

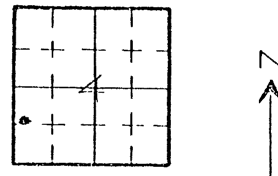
Signature Richard F. Barton

Reg. No. 9872

Date April 20, 1983



6. LOCATION DIAGRAM



(Do not fill in)

Accepted for Filing

State Board of Registration for Professional Engineers and Land Surveyors:

By _____

Date _____

RECEIVED AT OFFICE OF THE COUNTY CLERK,

_____ COUNTY

By _____

Date _____

Record to be filed by Index Reference Number, numerically, then alphabetically, under appropriate Township, Range, and Meridian.

SCALE 1" = 1 Mile

• = Location of Monument

7. SEC. 4, T 5 S, R 68 W, 6 P.M.

8. COUNTY ARAPAHOE INDEX REF NO 9.2-W

COUNTY _____ INDEX REF NO _____

Bill -
For measurement
book. 3

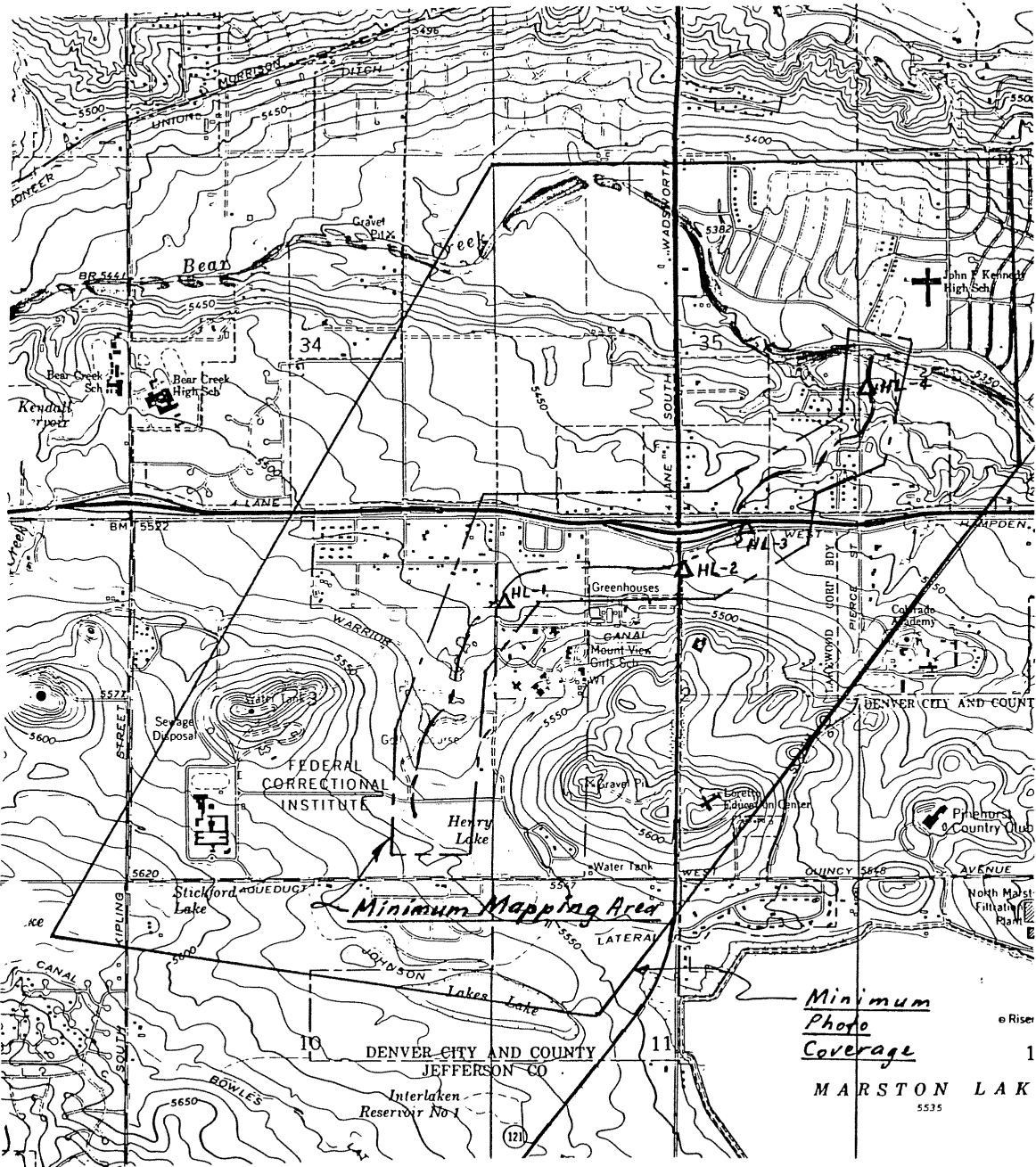


EXHIBIT
HENRY'S LAKE
MAJOR DRAINAGE
APRIL 1982

COLORADO LAND SURVEY MONUMENT RECORD

REPORT ONE MONUMENT ONLY ON THIS FORM

#40

All items to be filled in by the Land Surveyor using black ink or typewriter. (Except)*

1. TYPE OF MONUMENT Section Corner Bench mark
 (Check one) Quarter Corner Other _____

2. DESCRIPTION OF EVIDENCE FOUND, AND ORIGINAL RECORD CALL, IF KNOWN

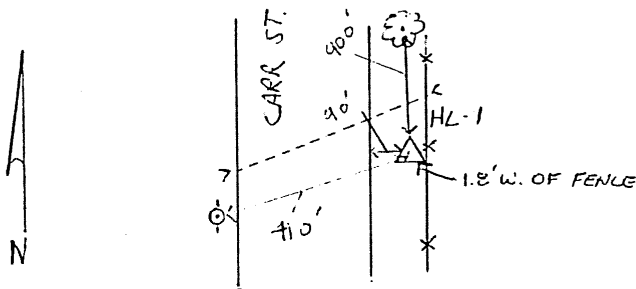
3. DESCRIPTION OF MONUMENT AND/OR ACCESSORIES ESTABLISHED BY YOU TO PERPETUATE THE LOCATION OF THIS POINT. GIVE YOUR ESTIMATE OF POSITIONAL TOLERANCE IF NOT ORIGINAL, UNDISTURBED MONUMENT.

Date of Field Work 8-1-82

2" BRASS CAP SET IN CONC-30' IN GROUND, .2' ABOVE GROUND. STAMPED U.D.F.C.D. HL-1

N 661,930.771 E. 2,115,432.778 ELEV. 5498.84

4. SKETCH SHOWING RELATIVE LOCATION OF MONUMENT AND REFERENCE POINTS. SHOW SUPPORTING AND/OR CONTRADICTORY EVIDENCE WHERE APPLICABLE.



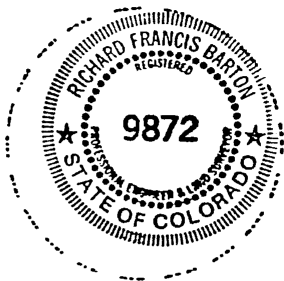
5. CERTIFICATION

This is to certify that I was in responsible charge of the surveying work described in this record and that to the best of my knowledge the information presented herein is true and correct.

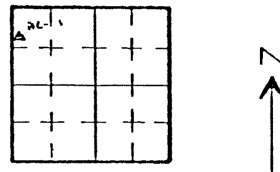
Surveyor's Seal

Signature Richard F. Barton

Reg. No. 9872
Date August 25, 1982



6. LOCATION DIAGRAM



(Do not fill in)

Accepted for Filing

State Board of Registration for Professional Engineers and Land Surveyors:

By _____

Date _____

RECEIVED AT OFFICE OF THE COUNTY CLERK;

_____ COUNTY

By _____

Date _____

Record to be filed by Index Reference Number, numerically, then alphabetically, under appropriate Township, Range, and Meridian.

SCALE 1" = 1 Mile
• = Location of Monument

7. SEC. 2, T. 5.5, R. 64W, 6TH P.M.

8. COUNTY JEFFERSON INDEX REF. NO 17.2-1
COUNTY _____ INDEX REF. NO _____

REPORT JULY 1, 1975

COLORADO LAND SURVEY MONUMENT RECORD
REPORT ONE MONUMENT ONLY ON THIS FORM

#41

All items to be filled in by the Land Surveyor using black ink or typewriter. (Except)

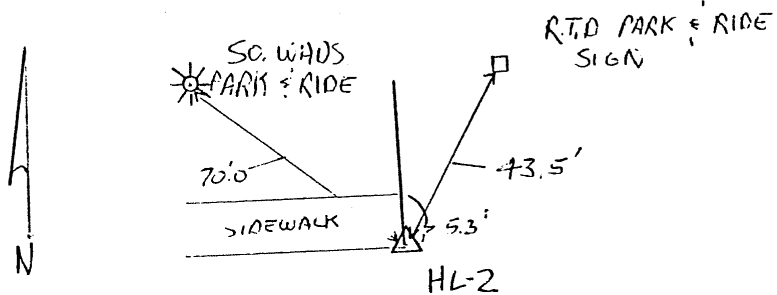
1. TYPE OF MONUMENT Section Corner Bench mark
 (Check one) Quarter Corner Other _____
2. DESCRIPTION OF EVIDENCE FOUND, AND ORIGINAL RECORD CALL, IF KNOWN

3. DESCRIPTION OF MONUMENT AND/OR ACCESSORIES ESTABLISHED BY YOU TO PERPETUATE THE LOCATION OF THIS POINT. GIVE YOUR ESTIMATE OF POSITIONAL TOLERANCE IF NOT ORIGINAL, UNDISTURBED MONUMENT.

Date of Field Work 8-1-82

2" BRASS CAP SET IN CONC. SIDEWALK.
 STAMPED U.D.F.C.D. HL-2
 N. 662,317.421 E 2,117,911.764 ELEV. 5486.12

4. SKETCH SHOWING RELATIVE LOCATION OF MONUMENT AND REFERENCE POINTS. SHOW SUPPORTING AND/OR CONTRADICTORY EVIDENCE WHERE APPLICABLE.



5. CERTIFICATION
 This is to certify that I was in responsible charge of the surveying work described in this record and that to the best of my knowledge the information presented herein is true and correct.

Surveyor's Seal

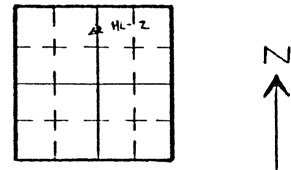
Signature Richard F. Burton

Reg. No. 9872

Date August 25, 1982



6. LOCATION DIAGRAM



(Do not fill in)

Accepted for Filing

State Board of Registration for Professional Engineers and Land Surveyors:

By _____

Date _____

RECEIVED AT OFFICE OF THE COUNTY CLERK:

_____ COUNTY

By _____

Date _____

Record to be filed by Index Reference Number, numerically, then alphabetically, under appropriate Township, Range, and Meridian.

SCALE 1" = 1 Mile
 • = Location of Monument

7. SEC. 2, T 5S, R 64W, 6TH P.M.
8. COUNTY JEFFERSON INDEX REF. NO. 19-V.5
 COUNTY _____ INDEX REF. NO. _____

1987 JULY 1 1985

COLORADO LAND SURVEY MONUMENT RECORD
REPORT ONE MONUMENT ONLY ON THIS FORM

#42

All items to be filled in by the Land Surveyor using black ink or typewriter. (Except)

1. TYPE OF MONUMENT (Check one)
- Section Corner
 - Quarter Corner
 - Bench mark
 - Other _____

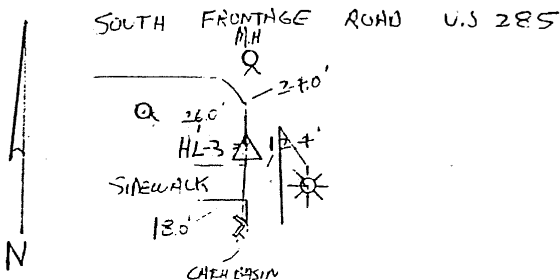
2. DESCRIPTION OF EVIDENCE FOUND, AND ORIGINAL RECORD CALL, IF KNOWN

3. DESCRIPTION OF MONUMENT AND/OR ACCESSORIES ESTABLISHED BY YOU TO PERPETUATE THE LOCATION OF THIS POINT. GIVE YOUR ESTIMATE OF POSITIONAL TOLERANCE IF NOT ORIGINAL, UNDISTURBED MONUMENT.

Date of Field Work 8-10-82

2" BRASS CAP SET IN TOP OF CURB
 STAMPED U.D.F.C.D. HL-3
 N. 663,028.252 E. 2,119,394.284 ELEV. 5459.23

4. SKETCH SHOWING RELATIVE LOCATION OF MONUMENT AND REFERENCE POINTS. SHOW SUPPORTING AND/OR CONTRADICTORY EVIDENCE WHERE APPLICABLE.



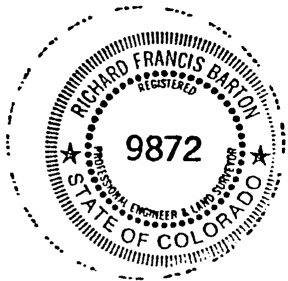
5. CERTIFICATION
This is to certify that I was in responsible charge of the surveying work described in this record and that to the best of my knowledge the information presented herein is true and correct.

Surveyor's Seal

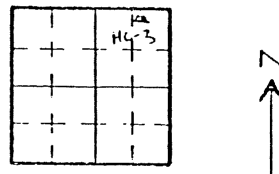
Signature Richard F. Barton

Reg. No. 9872

Date August 25, 1982



6. LOCATION DIAGRAM



(Do not fill in)

Accepted for Filing

State Board of Registration for Professional Engineers and Land Surveyors:

By _____

Date _____

RECEIVED AT OFFICE OF THE COUNTY CLERK.

_____ COUNTY

By _____

Date _____

Record to be filed by Index Reference Number, numerically, then alphabetically, under appropriate Township, Range, and Meridian.

SCALE 1" = 1 Mile

- Location of Monument

7. SEC. 2, T 55, R 64W, 6TH P.M.

8. COUNTY JEFFERSON INDEX REF. NO. 20.1-4.1

COUNTY _____ INDEX REF. NO. _____

COLORADO LAND SURVEY MONUMENT RECORD

43

REPORT ONE MONUMENT ONLY ON THIS FORM

All items to be filled in by the Land Surveyor using black ink or typewriter. (Except)*

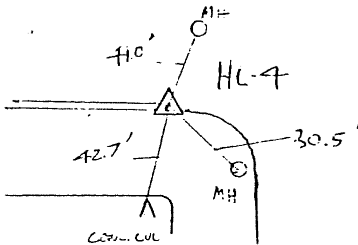
1. TYPE OF MONUMENT (Check one) Section Corner Bench mark Quarter Corner Other _____
2. DESCRIPTION OF EVIDENCE FOUND, AND ORIGINAL RECORD CALL, IF KNOWN

3. DESCRIPTION OF MONUMENT AND/OR ACCESSORIES ESTABLISHED BY YOU TO PERPETUATE THE LOCATION OF THIS POINT. GIVE YOUR ESTIMATE OF POSITIONAL TOLERANCE IF NOT ORIGINAL, UNDISTURBED MONUMENT. Date of Field Work 8-1-82

2" BRASS CAP SET IN CONC. - 3.0' IN GROUND - 2' ABOVE GROUND. STAMPED U.D.F.C.D. HL-4

N. 66.526.104 E. 2,120,808.700 ELEV. 5368.10

4. SKETCH SHOWING RELATIVE LOCATION OF MONUMENT AND REFERENCE POINTS. SHOW SUPPORTING AND/OR CONTRADICTORY EVIDENCE WHERE APPLICABLE.



5. CERTIFICATION This is to certify that I was in responsible charge of the surveying work described in this record and that to the best of my knowledge the information presented herein is true and correct.

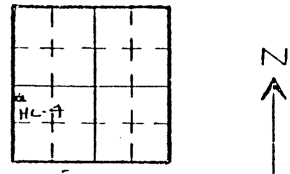
Surveyor's Seal

Signature Richard F. Barton

Reg. No. 9872
Date August 25, 1982



6. LOCATION DIAGRAM



(Do not fill in)

Accepted for Filing

State Board of Registration for Professional Engineers and Land Surveyors:

By _____

Date _____

RECEIVED AT OFFICE OF THE COUNTY CLERK:

_____ COUNTY

By _____

Date _____

Record to be filed by Index Reference Number, numerically, then alphabetically, under appropriate Township, Range, and Meridian.

SCALE 1" = 1 Mile
• - Location of Monument

7. SEC 36, T 45, R 69W, 6TH P.M.

8. COUNTY JEFFERSON INDEX REF. NO. 212-B.8
COUNTY _____ INDEX REF. NO. _____

REVISED JULY 1, 1975

COLORADO LAND SURVEY MONUMENT RECORD
REPORT ONE MONUMENT ONLY ON THIS FORM

44

All items to be filled in by the Land Surveyor using black ink or typewriter. (Except)*

1. TYPE OF MONUMENT Section Corner Bench mark
 (Check one) Quarter Corner Other CONTROL STATION
URBAN DRAINAGE & FLOOD CONTROL DISTRICT
2. DESCRIPTION OF EVIDENCE FOUND, AND ORIGINAL RECORD CALL, IF KNOWN

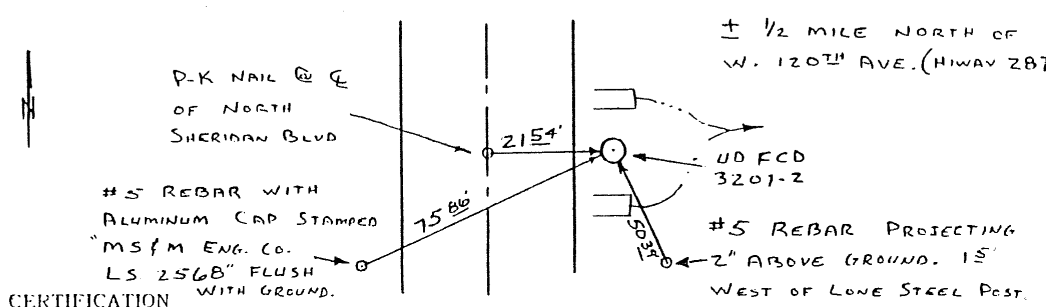
3. DESCRIPTION OF MONUMENT AND/OR ACCESSORIES ESTABLISHED BY YOU TO PERPETUATE THE LOCATION OF THIS POINT. GIVE YOUR ESTIMATE OF POSITIONAL TOLERANCE IF NOT ORIGINAL, UNDISTURBED MONUMENT.

Date of Field Work 4-4-78

SET 2 1/2" BRASS DISK IN CONCRETE PROJECTING 2" ABOVE GROUND. STAMPED

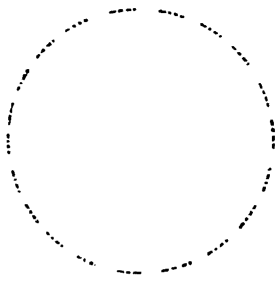


4. SKETCH SHOWING RELATIVE LOCATION OF MONUMENT AND REFERENCE POINTS. SHOW SUPPORTING AND/OR CONTRADICTORY EVIDENCE WHERE APPLICABLE.



5. CERTIFICATION
 This is to certify that I was in responsible charge of the surveying work described in this record and that to the best of my knowledge the information presented herein is true and correct.

Surveyor's Seal



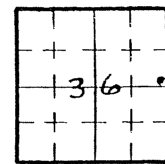
Signature _____

Reg. No. _____

Date _____

6. LOCATION DIAGRAM

FROM BROOMFIELD 3207 UPDATE
 N: 760,878.80
 E: 2025531.97
 ELEV. 5297.16



*(Do not fill in)

Accepted for Filing

State Board of Registration for Professional Engineers and Land Surveyors:

By _____

Date _____

RECEIVED AT OFFICE OF THE COUNTY CLERK;

_____ COUNTY

By _____

Date _____

Record to be filed by Index Reference Number, numerically, then alphabetically, under appropriate Township, Range, and Meridian.

SCALE 1" = 1 Mile

- Location of Monument

7. SEC. 36, T. 1S, R. 62W, 6TH P.M.

8. COUNTY BOULDER INDEX REF NO C-05 24.95
 COUNTY _____ INDEX REF. NO _____

LS-12 RE JULY 1, 1975

COLORADO LAND SURVEY MONUMENT RECORD
REPORT ONE MONUMENT ONLY ON THIS FORM

All items to be filled in by the Land Surveyor using black ink or typewriter. (Except)*

45

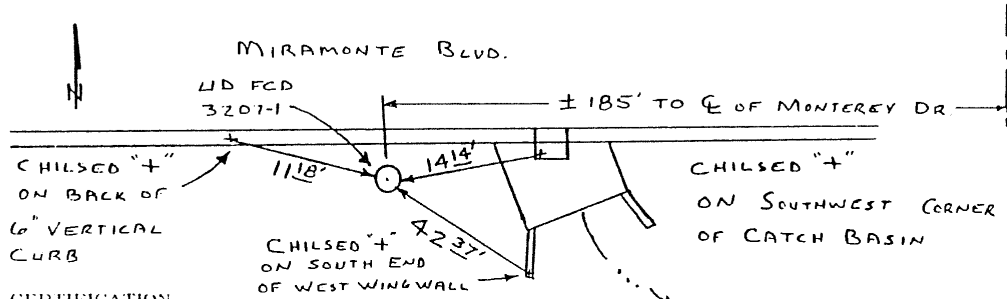
1. TYPE OF MONUMENT Section Corner Bench mark
(Check one) Quarter Corner Other CONTROL STATION
URBAN DRAINAGE & FLOOD CONTROL DISTRICT
2. DESCRIPTION OF EVIDENCE FOUND, AND ORIGINAL RECORD CALL, IF KNOWN

3. DESCRIPTION OF MONUMENT AND/OR ACCESSORIES ESTABLISHED BY YOU TO PERPETUATE THE LOCATION OF THIS POINT. GIVE YOUR ESTIMATE OF POSITIONAL TOLERANCE IF NOT ORIGINAL, UNDISTURBED MONUMENT.
- Date of Field Work 4-4-78

SET 2 1/2" BRASS DISK IN CONCRETE PROJECTING 2" ABOVE GROUND. STAMPED



4. SKETCH SHOWING RELATIVE LOCATION OF MONUMENT AND REFERENCE POINTS. SHOW SUPPORTING AND/OR CONTRADICTORY EVIDENCE WHERE APPLICABLE.



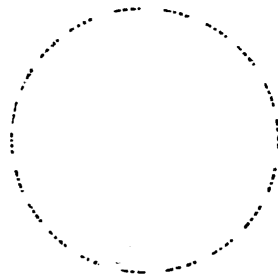
5. CERTIFICATION
This is to certify that I was in responsible charge of the surveying work described in this record and that to the best of my knowledge the information presented herein is true and correct.

Surveyor's Seal

Signature _____

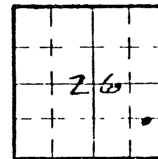
Reg. No. _____

Date _____



6. LOCATION DIAGRAM

FROM BROOMFIELD 3207 UPDATE
 N. 764,874.49
 E. 211,601.888
 ELEV. 5373.97



*(Do not fill in)

Accepted for Filing

State Board of Registration for Professional Engineers and Land Surveyors:

By _____

Date _____

RECEIVED AT OFFICE OF THE COUNTY CLERK;

_____ COUNTY

By _____

Date _____

Record to be filed by Index Reference Number, numerically, then alphabetically, under appropriate Township, Range, and Meridian.

SCALE 1" = 1 Mile

• Location of Monument

7. SEC. 26, T-1-S, R-69-W, 6TH P.M.

8. COUNTY BOULDER INDEX REF NO 20.4
 COUNTY _____ INDEX REF NO _____

EXPIRES JULY 1, 1975

COLORADO LAND SURVEY MONUMENT RECORD
REPORT ONE MONUMENT ONLY ON THIS FORM

#46

All items to be filled in by the Land Surveyor using black ink or typewriter. (Except)*

1. TYPE OF MONUMENT (Check one) Section Corner Bench mark Quarter Corner Other CONTROL STATION
URBAN DRAINAGE & FLOOD CONTROL DISTRICT
2. DESCRIPTION OF EVIDENCE FOUND, AND ORIGINAL RECORD CALL, IF KNOWN

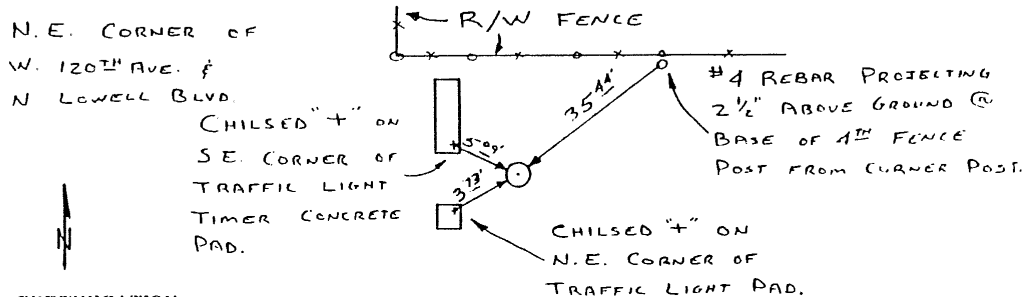
3. DESCRIPTION OF MONUMENT AND/OR ACCESSORIES ESTABLISHED BY YOU TO PERPETUATE THE LOCATION OF THIS POINT. GIVE YOUR ESTIMATE OF POSITIONAL TOLERANCE IF NOT ORIGINAL, UNDISTURBED MONUMENT.

Date of Field Work 4-4-78

SET 2 1/2" BRASS DISK IN CONCRETE PROJECTING 2" ABOVE GROUND STAMPED.

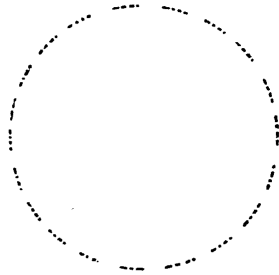


4. SKETCH SHOWING RELATIVE LOCATION OF MONUMENT AND REFERENCE POINTS. SHOW SUPPORTING AND/OR CONTRADICTIONARY EVIDENCE WHERE APPLICABLE.



5. CERTIFICATION
This is to certify that I was in responsible charge of the surveying work described in this record and that to the best of my knowledge the information presented herein is true and correct.

Surveyor's Seal



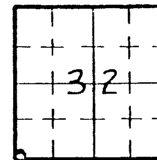
Signature _____

Reg. No. _____

Date 4-4-78

6. LOCATION DIAGRAM

FROM BROOMFIELD 3207 UPDATE
N. 753231.22
E. 2130824.21
ELEV. 5246.19



*(Do not fill in)

Accepted for Filing

State Board of Registration for Professional Engineers and Land Surveyors:

By _____

Date _____

RECEIVED AT OFFICE OF THE COUNTY CLERK;

_____ COUNTY

By _____

Date _____

Record to be filed by Index Reference Number, numerically, then alphabetically, under appropriate Township, Range, and Meridian.

SCALE 1" = 1 Mile
• Location of Monument

7. SEC. 32, T-1-S, R-68-W, 6TH P.M.

8. COUNTY BOULDER INDEX REF NO 5.05
 COUNTY _____ INDEX REF NO _____

COLORADO LAND SURVEY MONUMENT RECORD

REPORT ONE MONUMENT ONLY ON THIS FORM

All items to be filled in by the Land Surveyor using black ink or type.

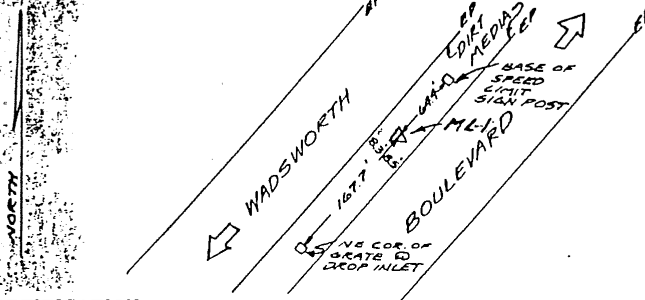
er. (Except) #47

- 1. TYPE OF MONUMENT (Check one)
 - Section Corner
 - Benchmark
 - Quarter Corner
 - Other

2. DESCRIPTION OF EVIDENCE FOUND, AND ORIGINAL RECORD CALL, IF KNOWN
 ML-3 SET 3 1/4" ALUM CAP W/MAGNET ON 1" x 36" SHAFT IN CONC. - UP OR STAMPED "UD. F.C.D. ML-3 R.L.S. 12111"
 COLD STATE PLANE COORDS. MODIFIED TO 5500' ABOVE MSL (CENTRAL ZONE)
 N - 656,632.925
 E - 8,117,777.710
 ELEV. (USGS MSL DATUM) = 5393.34'

3. DESCRIPTION OF MONUMENT AND/OR ACCESSORIES ESTABLISHED BY YOU TO PERPETUATE THE LOCATION OF THIS POINT. GIVE YOUR ESTIMATE OF POSITIONAL TOLERANCE IF NOT ORIGINAL, UNDISTURBED MONUMENT.
 Date of Field Work JULY 3, 1978

4. SKETCH SHOWING RELATIVE LOCATION OF MONUMENT AND REFERENCE POINTS. SHOW SUPPORTING AND/OR CONTRADICTORY EVIDENCE WHERE APPLICABLE.



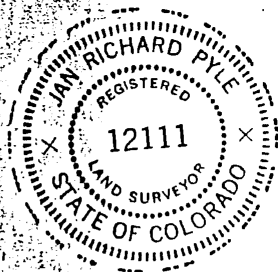
5. CERTIFICATION
 This is to certify that I was in responsible charge of the surveying work described in this record and that to the best of my knowledge the information presented herein is true and correct,

Surveyor's Seal

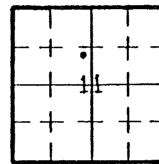
Signature Jan Richard Pyle

Reg. No. 12111

Date JULY 7, 1978
78113



6. LOCATION DIAGRAM



*(Do not fill in)

Accepted for Filing

State Board of Registration for Professional Engineers and Land Surveyors:

By _____

Date _____

RECEIVED AT OFFICE OF THE COUNTY CLERK;

_____ COUNTY

By _____

Date _____

Record to be filed by Index Reference Number, numerically, then alphabetically, under appropriate Township, Range, and Meridian.

SCALE 1" = 1 Mile

• = Location of Monument

7. SEC. 11, T 5-S, R 69-W, 6TH P.M.

8. COUNTY DENVER INDEX REF. NO. 188-TB

COUNTY _____ INDEX REF. NO. _____

COLORADO LAND SURVEY MONUMENT RECORD

REPORT ONE MONUMENT ONLY ON THIS FORM

48

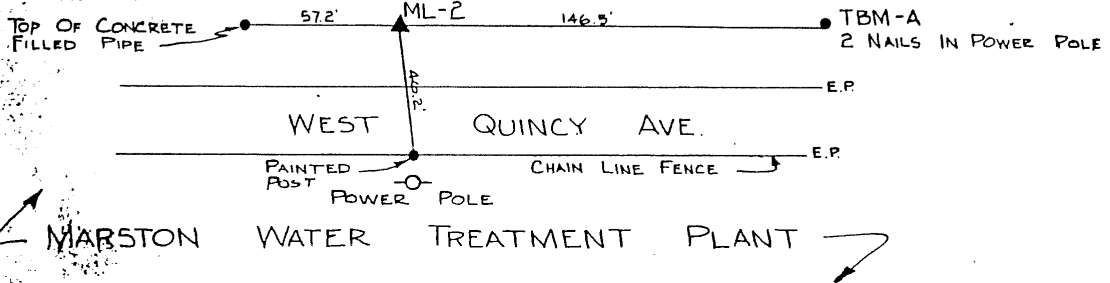
All items to be filled in by the Land Surveyor using black ink or typewriter. (Except)*

1. TYPE OF MONUMENT (Check one)
- Section Corner
 - Bench mark
 - Quarter Corner
 - Other _____

2. DESCRIPTION OF EVIDENCE FOUND, AND ORIGINAL RECORD CALL, IF KNOWN
 ML-2 SET 3/4" ALUM. CAP W/MAGNET ON 1" X 36" SHAFT
 IN CONC. - UP 02'. STAMPED 'U.D.-F.C.D ML-2 R.L.S. 12111'
 COLO. STATE PLANE COORDS. MODIFIED 10 5500 ABOVE
 MSL (CENTRAL ZONE)
 N-658,054.984
 E-2,123,755.223
 ELEV. (USGS MSL DATUM) - 5488.37

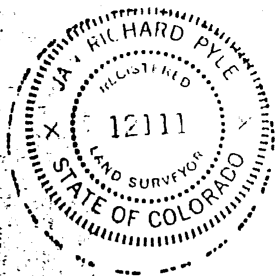
3. DESCRIPTION OF MONUMENT AND/OR ACCESSORIES ESTABLISHED BY YOU TO PERPETUATE THE LOCATION OF THIS POINT. GIVE YOUR ESTIMATE OF POSITIONAL TOLERANCE IF NOT ORIGINAL, UNDISTURBED MONUMENT.
 Date of Field Work JULY 3, 1978

4. SKETCH SHOWING RELATIVE LOCATION OF MONUMENT AND REFERENCE POINTS. SHOW SUPPORTING AND/OR CONTRADICTORY EVIDENCE WHERE APPLICABLE.



5. CERTIFICATION
 This is to certify that I was in responsible charge of the surveying work described in this record and that to the best of my knowledge the information presented herein is true and correct.

Surveyor's Seal



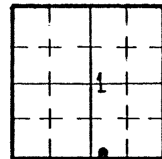
Signature

Jan Richard Pyle

Reg. No. 12111

Date JULY 5, 1978
78113

6. LOCATION DIAGRAM



SCALE 1" = 1 Mile

• = Location of Monument

*(Do not fill in)

Accepted for Filing
 State Board of Registration for Professional Engineers and Land Surveyors:

By _____
 Date _____

RECEIVED AT OFFICE OF THE COUNTY CLERK;
 _____ COUNTY

By _____
 Date _____

Record to be filed by Index Reference Number, numerically, then alphabetically, under appropriate Township, Range, and Meridian.

7. SEC. 1, T 5-S, R 69W, 6th P.M.

8. COUNTY DENVER INDEX REF. NO. 234-V
 COUNTY _____ INDEX REF. NO. _____

5:12 R1 JULY 1, 1970.

COLORADO LAND SURVEY MONUMENT RECORD

REPORT ONE MONUMENT ONLY ON THIS FORM

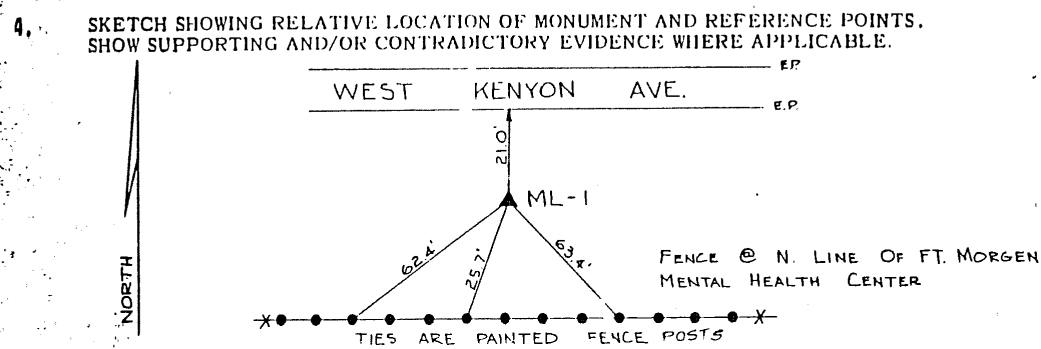
All items to be filled in by the Land Surveyor using black ink or typewriter. (Except)*

#49

1. TYPE OF MONUMENT (Check one) Section Corner Bench mark Other
- Quarter Corner

2. DESCRIPTION OF EVIDENCE FOUND, AND ORIGINAL RECORD CALL, IF KNOWN
 ML-1 SET 3/4" ALUM. CAP W/MAGNET ON 1"X36" SHAFT
 IN CONC. - up 02'. STAMPED "UD-F.C.D ML-1 R.L.S. 12111"
 COLO. STATE PLANE COORDS MODIFIED TO 5500' ABOVE
 MSL (CENTRAL ZONE)
 N - 661,993.164
 E - 2,127,819.746
 ELEV. (USGS MSL DATUM) = 5393.34'

3. DESCRIPTION OF MONUMENT AND/OR ACCESSORIES ESTABLISHED BY YOU TO PERPETUATE THE LOCATION OF THIS POINT. GIVE YOUR ESTIMATE OF POSITIONAL TOLERANCE IF NOT ORIGINAL, UNDISTURBED MONUMENT.
 Date of Field Work JULY 3, 1978



5. CERTIFICATION
 This is to certify that I was in responsible charge of the surveying work described in this record and that to the best of my knowledge the information presented herein is true and correct.

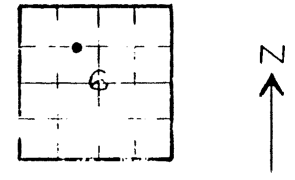
Surveyor's Seal

Signature: Jaw Richard Allen

Reg. No. 12111
Date JULY 5, 1978
78113



6. LOCATION DIAGRAM



(Do not fill in)

Accepted for Filing

State Board of Registration for Professional Engineers and Land Surveyors:

By _____

Date _____

RECEIVED AT OFFICE OF THE COUNTY CLERK;

_____ COUNTY

By _____

Date _____

Record to be filed by Index Reference Number, numerically, then alphabetically, under appropriate Township, Range and Meridian.

SCALE = 1 Mile
• Location of Monument

7. SEC. 6, T 5-S, R 68W, 6th P.M.

8. COUNTY DENVER INDEX REF. NO. 25-Y
 COUNTY _____ INDEX REF. NO. _____

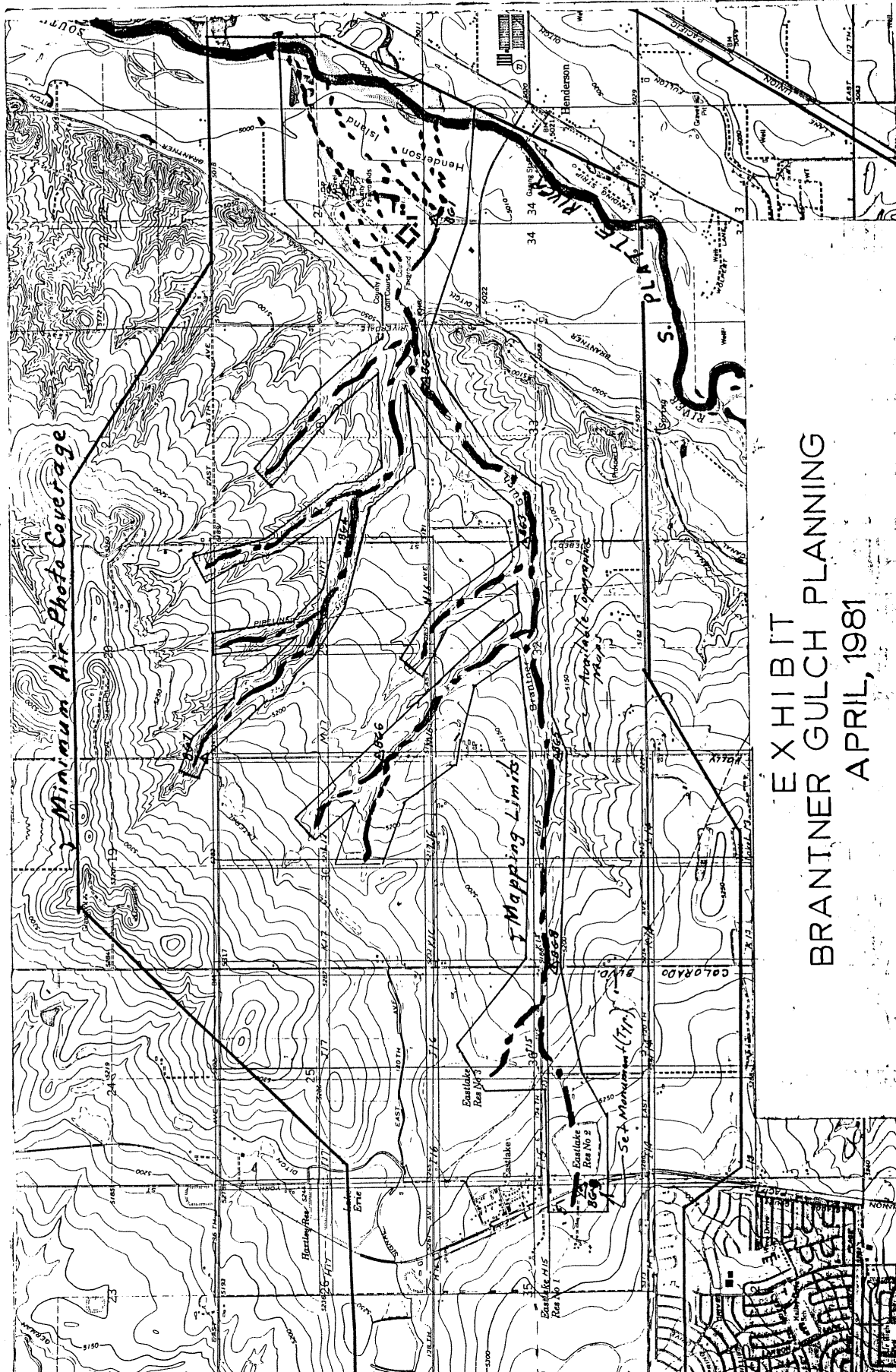


EXHIBIT
BRANTNER GULCH PLANNING
APRIL, 1981

COLORADO LAND SURVEY MONUMENT RECORD
REPORT ONE MONUMENT ONLY ON THIS FORM

634.3.8

All items to be filled in by the Land Surveyor using black ink or typewriter. (Except)*

#50

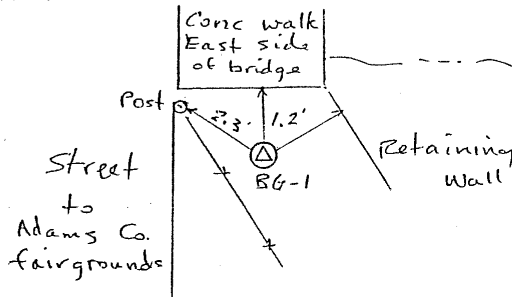
1. TYPE OF MONUMENT Section Corner Bench mark
 (Check one) Quarter Corner Other: Control Mon.
2. DESCRIPTION OF EVIDENCE FOUND, AND ORIGINAL RECORD CALL, IF KNOWN

3. DESCRIPTION OF MONUMENT AND/OR ACCESSORIES ESTABLISHED BY YOU TO PERPETUATE THE LOCATION OF THIS POINT. GIVE YOUR ESTIMATE OF POSITIONAL TOLERANCE IF NOT ORIGINAL, UNDISTURBED MONUMENT.

Date of Field Work OCT. 1981

2" Brass Cap set in concrete stamped UDFCD BG-1
 N 217,106.747
 E 2,175,419.988
 Elev 5013.76

4. SKETCH SHOWING RELATIVE LOCATION OF MONUMENT AND REFERENCE POINTS. SHOW SUPPORTING AND/OR CONTRADICTORY EVIDENCE WHERE APPLICABLE.



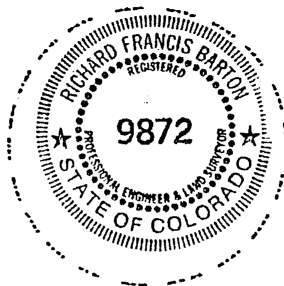
5. CERTIFICATION
 This is to certify that I was in responsible charge of the surveying work described in this record and that to the best of my knowledge the information presented herein is true and correct.

Surveyor's Seal

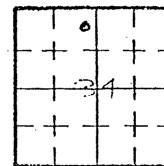
Signature Richard F. Barton

Reg. No. 9872

Date Nov. 10, 1981



6. LOCATION DIAGRAM



SCALE 1" = 1 Mile
 • = Location of Monument

(Do not fill in)

Accepted for Filing

State Board of Registration for Professional Engineers and Land Surveyors:

By _____

Date _____

RECEIVED AT OFFICE OF THE COUNTY CLERK;

_____ COUNTY

By _____

Date _____

Record to be filed by Index Reference Number, numerically, then alphabetically, under appropriate Township, Range, and Meridian.

7. SEC. 34, T. 15, R. 67W, 6th P.M.

8. COUNTY ADAMS INDEX REF. NO. 14.6^D
 COUNTY _____ INDEX REF. NO. _____

COLORADO LAND SURVEY MONUMENT RECORD
REPORT ONE MONUMENT ONLY ON THIS FORM

All items to be filled in by the Land Surveyor using black ink or typewriter. (Except)*

#51

1. TYPE OF MONUMENT Section Corner Bench mark
 (Check one) Quarter Corner Other _____
2. DESCRIPTION OF EVIDENCE FOUND, AND ORIGINAL RECORD CALL, IF KNOWN

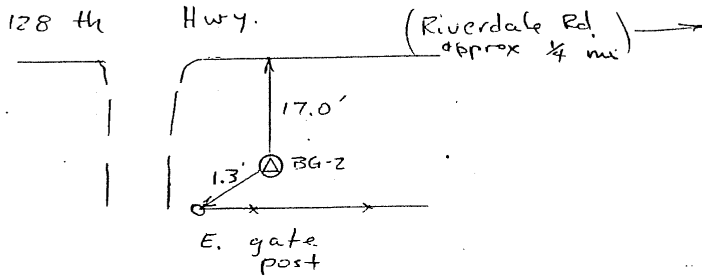
3. DESCRIPTION OF MONUMENT AND/OR ACCESSORIES ESTABLISHED BY YOU TO PERPETUATE THE LOCATION OF THIS POINT. GIVE YOUR ESTIMATE OF POSITIONAL TOLERANCE IF NOT ORIGINAL, UNDISTURBED MONUMENT.

Date of Field Work Oct. 1981

2" Brass Cap set in concrete stamped UDFCD BG-2

N 217,411.142
E 2,171,490.273
Elev. 5050.65

4. SKETCH SHOWING RELATIVE LOCATION OF MONUMENT AND REFERENCE POINTS. SHOW SUPPORTING AND/OR CONTRADICTORY EVIDENCE WHERE APPLICABLE.



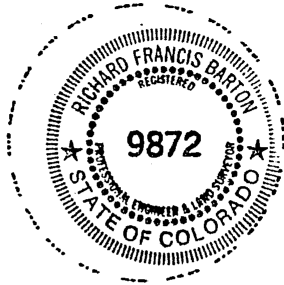
5. CERTIFICATION
 This is to certify that I was in responsible charge of the surveying work described in this record and that to the best of my knowledge the information presented hereth is true and correct.

Surveyor's Seal

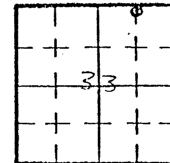
Signature Richard F. Barton

Reg. No. 9872

Date Nov. 10, 1981



6. LOCATION DIAGRAM



SCALE 1" = 1 Mile
• = Location of Monument

*(Do not fill in)

Accepted for Filing

State Board of Registration for Professional Engineers and Land Surveyors:

By _____

Date _____

RECEIVED AT OFFICE OF THE COUNTY CLERK;

_____ COUNTY

By _____

Date _____

Record to be filed by Index Reference Number, numerically, then alphabetically, under appropriate Township, Range, and Meridian.

7. SEC. 33, T 13, R 67W, 6 P.M.

8. COUNTY ADAMS INDEX REF. NO. 12-D
 COUNTY _____ INDEX REF. NO. _____

COLORADO LAND SURVEY MONUMENT RECORD

REPORT ONE MONUMENT ONLY ON THIS FORM

All items to be filled in by the Land Surveyor using black ink or typewriter. (Except)*

1. TYPE OF MONUMENT (Check one) Section Corner Bench mark
 Quarter Corner Other: Control Mon

4152

2. DESCRIPTION OF EVIDENCE FOUND, AND ORIGINAL RECORD CALL, IF KNOWN

3. DESCRIPTION OF MONUMENT AND/OR ACCESSORIES ESTABLISHED BY YOU TO PERPETUATE THE LOCATION OF THIS POINT. GIVE YOUR ESTIMATE OF POSITIONAL TOLERANCE IF NOT ORIGINAL, UNDISTURBED MONUMENT.

Date of Field Work Oct. 1981

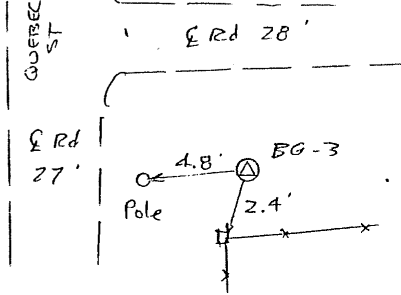
2" Brass Cap set in concrete stamped UDFCD BG-3

N 215,180.141

E 2,167,606.586

Elev 5088.33

4. SKETCH SHOWING RELATIVE LOCATION OF MONUMENT AND REFERENCE POINTS. SHOW SUPPORTING AND/OR CONTRADICTORY EVIDENCE WHERE APPLICABLE.



5. CERTIFICATION

This is to certify that I was in responsible charge of the surveying work described in this record and that to the best of my knowledge the information presented herein is true and correct.

Surveyor's Seal

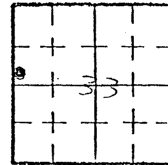
Signature Richard L. Barton

Reg. No. 9872

Date Nov. 10, 1981



6. LOCATION DIAGRAM



SCALE 1" = 1 Mile
• = Location of Monument

*(Do not fill in)

Accepted for Filing

State Board of Registration for Professional Engineers and Land Surveyors:

By _____

Date _____

RECEIVED AT OFFICE OF THE COUNTY CLERK;

_____ COUNTY

By _____

Date _____

Record to be filed by Index Reference Number, numerically, then alphabetically, under appropriate Township, Range, and Meridian.

7. SEC. 33, T 1S, R 67W, 6 P.M.

8. COUNTY ADAMS INDEX REF. NO. 9.2-C.2

COUNTY _____ INDEX REF. NO. _____

COLORADO LAND SURVEY MONUMENT RECORD
REPORT ONE MONUMENT ONLY ON THIS FORM

All items to be filled in by the Land Surveyor using black ink or typewriter. (Except)* #53

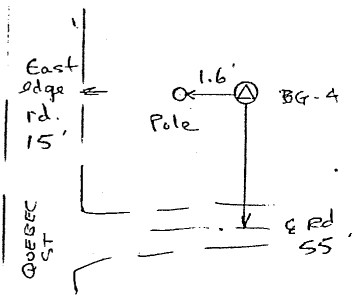
- 1. TYPE OF MONUMENT Section Corner Bench mark
(Check one) Quarter Corner Other Control Mon.

2. DESCRIPTION OF EVIDENCE FOUND, AND ORIGINAL RECORD CALL, IF KNOWN:

3. DESCRIPTION OF MONUMENT AND/OR ACCESSORIES ESTABLISHED BY YOU TO PERPETUATE THE LOCATION OF THIS POINT. GIVE YOUR ESTIMATE OF POSITIONAL TOLERANCE IF NOT ORIGINAL, UNDISTURBED MONUMENT.
Date of Field Work Oct. 1981

2" Brass Cap set in concrete stamped UD FCD BG-4
N 219,596.610
E 2,167,572.359
Elev. 5123.28

4. SKETCH SHOWING RELATIVE LOCATION OF MONUMENT AND REFERENCE POINTS. SHOW SUPPORTING AND/OR CONTRADICTORY EVIDENCE WHERE APPLICABLE.



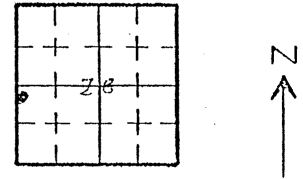
5. CERTIFICATION
This is to certify that I was in responsible charge of the surveying work described in this record and that to the best of my knowledge the information presented herein is true and correct.

Surveyor's Seal

Signature Richard F. Barton
Reg. No. 9872
Date Nov. 10, 1981



6. LOCATION DIAGRAM



(Do not fill in)

Accepted for Filing

State Board of Registration for Professional Engineers and Land Surveyors:

By _____

Date _____

RECEIVED AT OFFICE OF THE COUNTY CLERK;

_____ COUNTY

By _____

Date _____

Record to be filed by Index Reference Number, numerically, then alphabetically, under appropriate Township, Range, and Meridian.

SCALE 1" = 1 Mile
• = Location of Monument

7. SEC. 28, T 1 S, R 67 W, 6 P.M.
8. COUNTY ADAMS INDEX REF. NO. 9.1-F.8
COUNTY _____ INDEX REF. NO. _____

COLORADO LAND SURVEY MONUMENT RECORD
REPORT ONE MONUMENT ONLY ON THIS FORM

4154

All items to be filled in by the Land Surveyor using black ink or typewriter. (Except)*

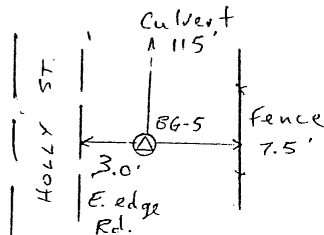
1. TYPE OF MONUMENT (Check one) Section Corner Bench mark
 Quarter Corner Other: Control Mon
2. DESCRIPTION OF EVIDENCE FOUND, AND ORIGINAL RECORD CALL, IF KNOWN

3. DESCRIPTION OF MONUMENT AND/OR ACCESSORIES ESTABLISHED BY YOU TO PERPETUATE THE LOCATION OF THIS POINT. GIVE YOUR ESTIMATE OF POSITIONAL TOLERANCE IF NOT ORIGINAL, UNDISTURBED MONUMENT.

Date of Field Work Oct. 1981

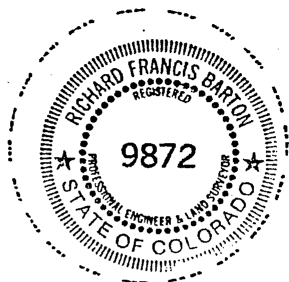
2" Brass Cap set in concrete stamped VDFCD BG-5
N 214,328.257
E 2,162,306.111
Elev. 5129.55

4. SKETCH SHOWING RELATIVE LOCATION OF MONUMENT AND REFERENCE POINTS. SHOW SUPPORTING AND/OR CONTRADICTIONARY EVIDENCE WHERE APPLICABLE.



5. CERTIFICATION
This is to certify that I was in responsible charge of the surveying work described in this record and that to the best of my knowledge the information presented herein is true and correct.

Surveyor's Seal

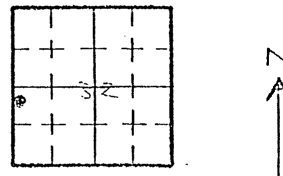


Signature Richard F. Barton

Reg. No. 9872

Date Nov. 10, 1981

6. LOCATION DIAGRAM



SCALE 1" = 1 Mile
• = Location of Monument

(Do not fill in)

Accepted for Filing

State Board of Registration for Professional Engineers and Land Surveyors:

By _____

Date _____

RECEIVED AT OFFICE OF THE COUNTY CLERK;

_____ COUNTY

By _____

Date _____

Record to be filed by Index Reference Number, numerically, then alphabetically, under appropriate Township, Range, and Meridian.

7. SEC. 32, T 15, R 67 W, 6 P.M.

8. COUNTY ADAMS INDEX REF. NO. 5.1-8.8

COUNTY _____ INDEX REF. NO. _____

COLORADO LAND SURVEY MONUMENT RECORD

REPORT ONE MONUMENT ONLY ON THIS FORM

All items to be filled in by the Land Surveyor using black ink or typewriter. (Except)*

#55

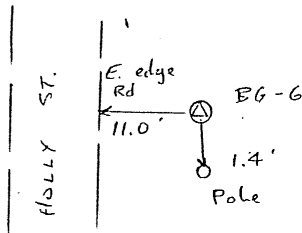
1. TYPE OF MONUMENT (Check one) Section Corner Bench mark Quarter Corner Other Control Mon.
2. DESCRIPTION OF EVIDENCE FOUND, AND ORIGINAL RECORD CALL, IF KNOWN

3. DESCRIPTION OF MONUMENT AND/OR ACCESSORIES ESTABLISHED BY YOU TO PERPETUATE THE LOCATION OF THIS POINT. GIVE YOUR ESTIMATE OF POSITIONAL TOLERANCE IF NOT ORIGINAL, UNDISTURBED MONUMENT.

Date of Field Work Oct 1981

2" Brass Cap set in concrete stamped UDFCD BG-6
 N 218,704.773
 E 2,162,294.714
 Elev 5184.48

4. SKETCH SHOWING RELATIVE LOCATION OF MONUMENT AND REFERENCE POINTS. SHOW SUPPORTING AND/OR CONTRADICTIONARY EVIDENCE WHERE APPLICABLE.



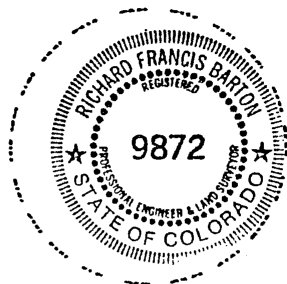
5. CERTIFICATION This is to certify that I was in responsible charge of the surveying work described in this record and that to the best of my knowledge the information presented herein is true and correct.

Surveyor's Seal

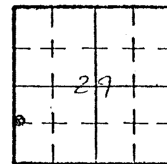
Signature Richard F. Barton

Reg. No. 9872

Date Nov. 10, 1981



6. LOCATION DIAGRAM



SCALE 1" = 1 Mile
 • = Location of Monument

*(Do not fill in)

Accepted for Filing

State Board of Registration for Professional Engineers and Land Surveyors:

By _____

Date _____

RECEIVED AT OFFICE OF THE COUNTY CLERK;

_____ COUNTY

By _____

Date _____

Record to be filed by Index Reference Number, numerically, then alphabetically, under appropriate Township, Range, and Meridian.

7. SEC. 29, T. 1 S, R. 67 W, 6 P.M.

8. COUNTY ADAMS INDEX REF. NO. 5.1-F
- COUNTY _____ INDEX REF. NO. _____

COLORADO LAND SURVEY MONUMENT RECORD
REPORT ONE MONUMENT ONLY ON THIS FORM

All items to be filled in by the Land Surveyor using black ink or typewriter. (Except)*

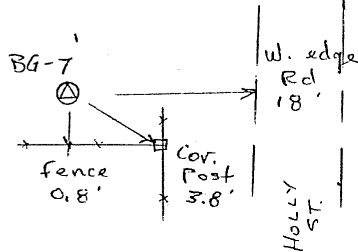
1. TYPE OF MONUMENT (Check one)
- Section Corner
 - Quarter Corner
 - Bench mark
 - Other Control Mon
2. DESCRIPTION OF EVIDENCE FOUND, AND ORIGINAL RECORD CALL, IF KNOWN

#56

3. DESCRIPTION OF MONUMENT AND/OR ACCESSORIES ESTABLISHED BY YOU TO PERPETUATE THE LOCATION OF THIS POINT. GIVE YOUR ESTIMATE OF POSITIONAL TOLERANCE IF NOT ORIGINAL, UNDISTURBED MONUMENT.
- Date of Field Work Oct. 1981

2" Brass Cap set in concrete stamped UDFCD BG 7.
 N 223,729.288
 E 2,162,178.901
 Elev. 5245.31

4. SKETCH SHOWING RELATIVE LOCATION OF MONUMENT AND REFERENCE POINTS. SHOW SUPPORTING AND/OR CONTRADICTORY EVIDENCE WHERE APPLICABLE.



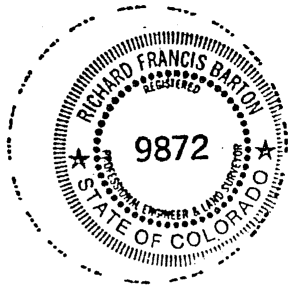
5. CERTIFICATION
 This is to certify that I was in responsible charge of the surveying work described in this record and that to the best of my knowledge the information presented herein is true and correct.

Surveyor's Seal

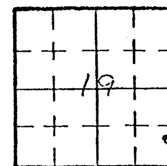
Signature Richard F. Barton

Reg. No. 9872

Date Nov. 10, 1981



6. LOCATION DIAGRAM



SCALE 1" = 1 Mile
 • = Location of Monument

*(Do not fill in)

Accepted for Filing

State Board of Registration for Professional Engineers and Land Surveyors:

By _____

Date _____

RECEIVED AT OFFICE OF THE COUNTY CLERK;

_____ COUNTY

By _____

Date _____

Record to be filed by Index Reference Number, numerically, then alphabetically, under appropriate Township, Range, and Meridian.

7. SEC. 19, T. 1 S, R. 67 W, 6 P.M.

8. COUNTY ADAMS INDEX REF. NO. 49-J.7
 COUNTY _____ INDEX REF. NO. _____

All items to be filled in by the Land Surveyor using black ink or typewriter. (Except)

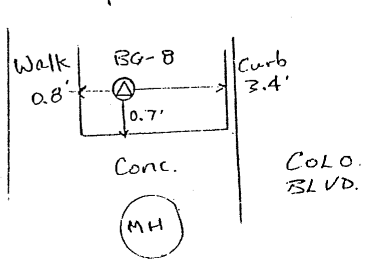
1. TYPE OF MONUMENT Section Corner Bench mark
 (Check one) Quarter Corner Other: Control mark

2. DESCRIPTION OF EVIDENCE FOUND, AND ORIGINAL RECORD CALL, IF KNOWN #57

3. DESCRIPTION OF MONUMENT AND/OR ACCESSORIES ESTABLISHED BY YOU TO PERPETUATE THE LOCATION OF THIS POINT. GIVE YOUR ESTIMATE OF POSITIONAL TOLERANCE IF NOT ORIGINAL, UNDISTURBED MONUMENT. Date of Field Work Oct 1981

2" Brass Cap set in concrete stamped VDFCD BG-8
 N 214,514.151
 E 2,157,106.727
 Elev. 5188.89

4. SKETCH SHOWING RELATIVE LOCATION OF MONUMENT AND REFERENCE POINTS. SHOW SUPPORTING AND/OR CONTRADICTORY EVIDENCE WHERE APPLICABLE.



5. CERTIFICATION This is to certify that I was in responsible charge of the surveying work described in this record and that to the best of my knowledge the information presented herein is true and correct.

Surveyor's Seal

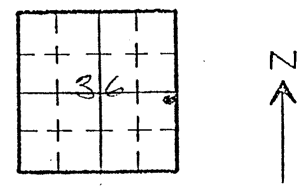
Signature Richard F. Barton

Reg. No. 9872

Date Nov. 10, 1981



6. LOCATION DIAGRAM



(Do not fill in)

Accepted for Filing

State Board of Registration for Professional Engineers and Land Surveyors:

By _____

Date _____

RECEIVED AT OFFICE OF THE COUNTY CLERK;

_____ COUNTY

By _____

Date _____

Record to be filed by Index Reference Number, numerically, then alphabetically, under appropriate Township, Range, and Meridian.

SCALE 1" = 1 Mile
 • = Location of Monument

7. SEC. 36, T. 15, R. 69W, 6 P.M.
 8. COUNTY ADAMS INDEX REF. NO. 249-B.8
 COUNTY _____ INDEX REF. NO. _____

COLORADO LAND SURVEY MONUMENT RECORD
REPORT ONE MONUMENT ONLY ON THIS FORM

All items to be filled in by the Land Surveyor using black ink or typewriter. (Except)*

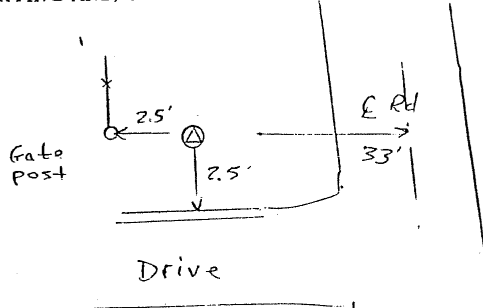
#58

1. TYPE OF MONUMENT Section Corner Bench mark
 (Check one) Quarter Corner Other Control Mon
2. DESCRIPTION OF EVIDENCE FOUND, AND ORIGINAL RECORD CALL, IF KNOWN

3. DESCRIPTION OF MONUMENT AND/OR ACCESSORIES ESTABLISHED BY YOU TO PERPETUATE THE LOCATION OF THIS POINT. GIVE YOUR ESTIMATE OF POSITIONAL TOLERANCE IF NOT ORIGINAL, UNDISTURBED MONUMENT.
- Date of Field Work Oct. 1981

2" Brass Cap set in concrete stamped UDFCD BG-9
 N 213,879.215
 E 2,151,455.710
 ELEV. 5263.84

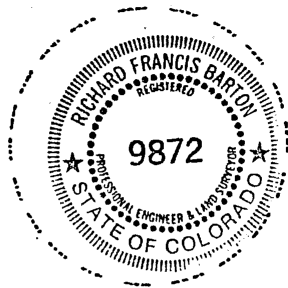
4. SKETCH SHOWING RELATIVE LOCATION OF MONUMENT AND REFERENCE POINTS. SHOW SUPPORTING AND/OR CONTRADICTORY EVIDENCE WHERE APPLICABLE.



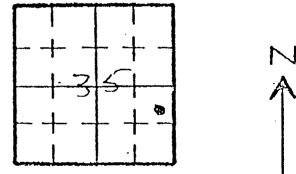
5. CERTIFICATION
 This is to certify that I was in responsible charge of the surveying work described in this record and that to the best of my knowledge the information presented herein is true and correct.

Surveyor's Seal

Signature Richard F. Barton
 Reg. No. 9872
 Date Nov. 10, 1981



6. LOCATION DIAGRAM



*(Do not fill in)

Accepted for Filing

State Board of Registration for Professional Engineers and Land Surveyors:

By _____

Date _____

RECEIVED AT OFFICE OF THE COUNTY CLERK;

_____ COUNTY

By _____

Date _____

Record to be filed by Index Reference Number, numerically, then alphabetically, under appropriate Township, Range, and Meridian.

SCALE 1" = 1 Mile
 • = Location of Monument

7. SEC. 35, T. 1 S, R. 68 W, 6 P.M.
8. COUNTY ADAMS INDEX REF. NO. 22.7-B.4
 COUNTY _____ INDEX REF. NO. _____

#85

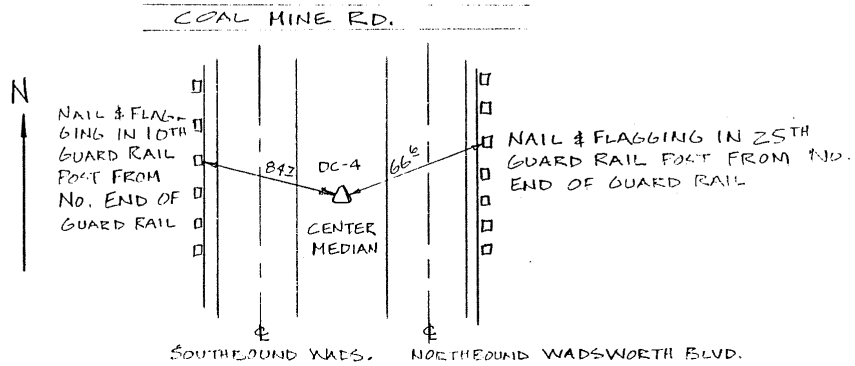
MONUMENT RECORD

MAP DESIGNATION DC-4

MONUMENT IDENTIFICATION DC-4 (H OF P. 9) NOT ON REPORT

LOCATION DESCRIPTION A 2 1/2" DIA BRASS DISK 0 1/4 FT. BELOW GROUND

LOCATION SKETCH



ELEVATION 5541.09

COORDINATES N 641,691.797 E 2,115,333.765 S 26 T 55 R 69 W

CORRECTION FACTORS USED

AVERAGE ELEVATION 5500

SCALE FACTOR 0.9999738

SEA LEVEL FACTOR 0.999737

COMBINED FACTOR 0.9997108

COMPANY SETTING MONUMENT DELTA AERIAL SURVEYS, INC.

DATE SET JUNE '77 (Approximate)

INSPECTION RECORD

DATE

INSPECTOR

CONDITION

#86

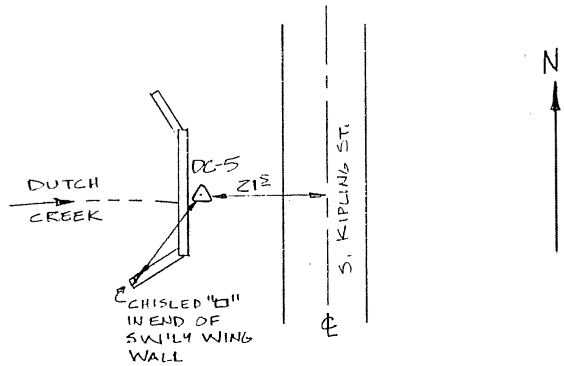
MONUMENT RECORD

MAP DESIGNATION DC-5

MONUMENT IDENTIFICATION DC-5 (P.7)

LOCATION DESCRIPTION A 2 1/2" DIA BRASS DISK 0.2 FT BELOW GROUND

LOCATION SKETCH



ELEVATION 5502.32

COORDINATES N 641,293.231 E 2,110,018.348 S 28 T 55 R 69 W

CORRECTION FACTORS USED

AVERAGE ELEVATION 5500

SCALE FACTOR 0.9999738

SEA LEVEL FACTOR 0.999737

COMBINED FACTOR 0.9997108

COMPANY SETTING MONUMENT DELTA AERIAL SURVEYS, INC.

DATE SET JUNE '77 (Approximate)

INSPECTION RECORD

| <u>DATE</u> | <u>INSPECTOR</u> | <u>CONDITION</u> |
|-------------|------------------|------------------|
| | | |
| | | |
| | | |
| | | |
| | | |
| | | |
| | | |

11/22/77

#87

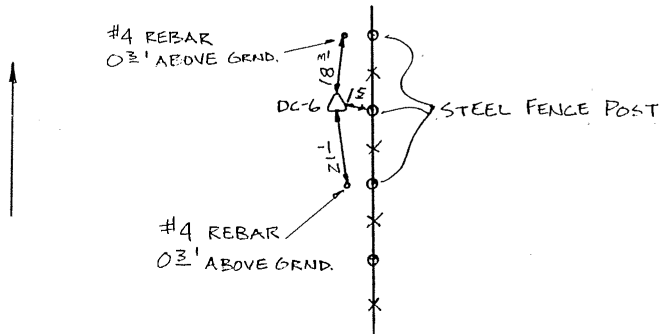
MONUMENT RECORD

MAP DESIGNATION DC-6

MONUMENT IDENTIFICATION DC-6 (P.5)

LOCATION DESCRIPTION A 2 1/2" DIA. F.E.A.S.S. DISK 0 3/4 FT. BELOW GROUND

LOCATION SKETCH



ELEVATION 5668.65

COORDINATES N640,640.068 E2,104,742.979 528T53R69W

CORRECTION FACTORS USED

AVERAGE ELEVATION 5500

SCALE FACTOR 0.9999738

SEA LEVEL FACTOR 0.999737

COMBINED FACTOR 0.9997108

COMPANY SETTING MONUMENT DELTA AERIAL SURVEYS, INC.

DATE SET JUNE '77 (Approximate)

INSPECTION RECORD

DATE

INSPECTOR

CONDITION

| <u>DATE</u> | <u>INSPECTOR</u> | <u>CONDITION</u> |
|-------------|------------------|------------------|
| | | |
| | | |
| | | |
| | | |
| | | |
| | | |
| | | |
| | | |
| | | |
| | | |

590'



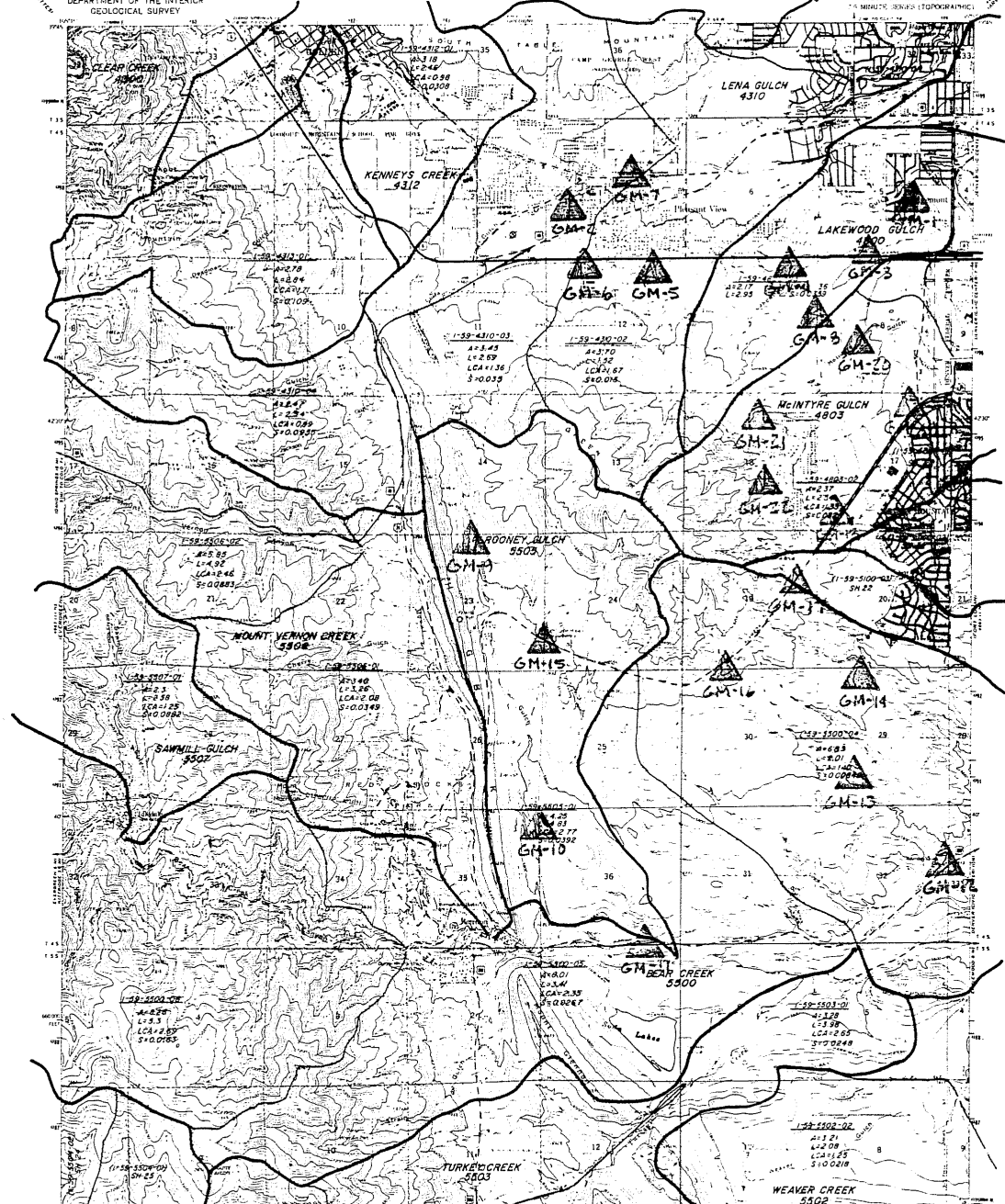
DENVER REGIONAL COUNCIL OF GOVERNMENTS
AND
URBAN DRAINAGE AND FLOOD CONTROL DISTRICT



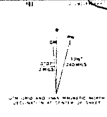
PRELIMINARY DATA

UNITED STATES
DEPARTMENT OF THE INTERIOR
GEOLOGICAL SURVEY

MORRISON QUADRANGLE
COLORADO-JEFFERSON CO.
7.5 MINUTE SERIES TOPOGRAPHIC



Map reproduced and published by the American Society of Civil Engineers, Inc. 1965. All rights reserved. No part of this publication may be reproduced without the written permission of the American Society of Civil Engineers, Inc. 1800 Alexander Bell Blvd., New York, N.Y. 10017.



The information on this map was derived from the 1971 information on the Denver Urban Drainage and Flood Control District. It is not to be used for any purpose other than that for which it was prepared. The information on this map was derived from the 1971 information on the Denver Urban Drainage and Flood Control District. It is not to be used for any purpose other than that for which it was prepared.

ROAD CLASSIFICATION
 1" = 1 mile
 A_i Area in Sq. Miles
 L_i Length in Miles
 LC_i Length to Centroid of Area in Miles
 S_i Slope in Feet per Foot
 NO. 23
 MORRISON COLO.
 1965

LEONARD RICE Consulting Water Engineers
denver, colorado

1" = 1 mile

PROJECT REUSE

#132

MONUMENT RECORD

MAP DESIGNATION MD-7

MONUMENT IDENTIFICATION UD-7 (p. 11)

LOCATION DESCRIPTION _____

LOCATION SKETCH

ELEVATION 5724.90 ±

FHAD ONLY

COORDINATES N633,464.68 E2,108,165.77 ±

CORRECTION FACTORS USED

AVERAGE ELEVATION 5500 SCALE FACTOR 0.9999738

SEA LEVEL FACTOR 0.999737 COMBINED FACTOR 0.9997108

COMPANY SETTING MONUMENT DELTA AERIAL SURVEYS

DATE SET APRIL '77 (Approximate)

INSPECTION RECORD

| <u>DATE</u> | <u>INSPECTOR</u> | <u>CONDITION</u> |
|-------------|------------------|------------------|
| | | |
| | | |
| | | |
| | | |
| | | |
| | | |
| | | |
| | | |

MONUMENT RECORD

#134

MAP DESIGNATION SJCD-4

MONUMENT IDENTIFICATION TT-17D ^{CL} (UD-11) ^R (F 171221)
STND. U.S.G.S BRASS CAP (B.M.)

LOCATION DESCRIPTION _____

LOCATION SKETCH

From Massey DRAW
1/4 SJCD So.

6200-02



? ELEVATION 5619.55 CL
? COORDINATES N 636, 083.463 E 2108, 420.411 CL S27T55R69W

CORRECTION FACTORS USED

AVERAGE ELEVATION 5500 SCALE FACTOR 0.9999738

SEA LEVEL FACTOR 0.999737 COMBINED FACTOR 0.9997108

COMPANY SETTING MONUMENT DELTA AERIAL SURVEYS

DATE SET APRIL '77 (Approximate)

INSPECTION RECORD

DATE INSPECTOR CONDITION

Table with 3 columns: DATE, INSPECTOR, and CONDITION. The table contains several empty rows for recording inspection data.

MONUMENT RECORD

#148

MAP DESIGNATION WGT-1

MONUMENT IDENTIFICATION I-A-T-1 NOTES (FT-1 REFLECT (P. 3))

LOCATION DESCRIPTION _____

LOCATION SKETCH

01

ELEVATION 5436.94

COORDINATES N686,992.77 E2,121,045.75 S12T45R69W

CORRECTION FACTORS USED

AVERAGE ELEVATION 5500

SCALE FACTOR 0.999995529

SEA LEVEL FACTOR 1

COMBINED FACTOR 0.999995529

COMPANY SETTING MONUMENT DELTA AERIAL SURVEYS

DATE SET Nov. '76 (Approximate)

INSPECTION RECORD

DATE

INSPECTOR

CONDITION

#149

COLORADO LAND SURVEY MONUMENT RECORD

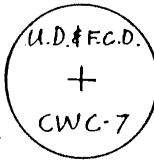
REPORT ONE MONUMENT ONLY ON THIS FORM
REPRODUCTION OF THIS FORM IS AUTHORIZED.

All items to be filled in by the Land Surveyor using black ink or typewriter. (Except)*

1. TYPE OF MONUMENT (Check one) Section Corner Bench mark Other U.D. & F.C.D. CONTROL
2. DESCRIPTION OF EVIDENCE FOUND, AND ORIGINAL RECORD CALL, IF KNOWN CWC-7

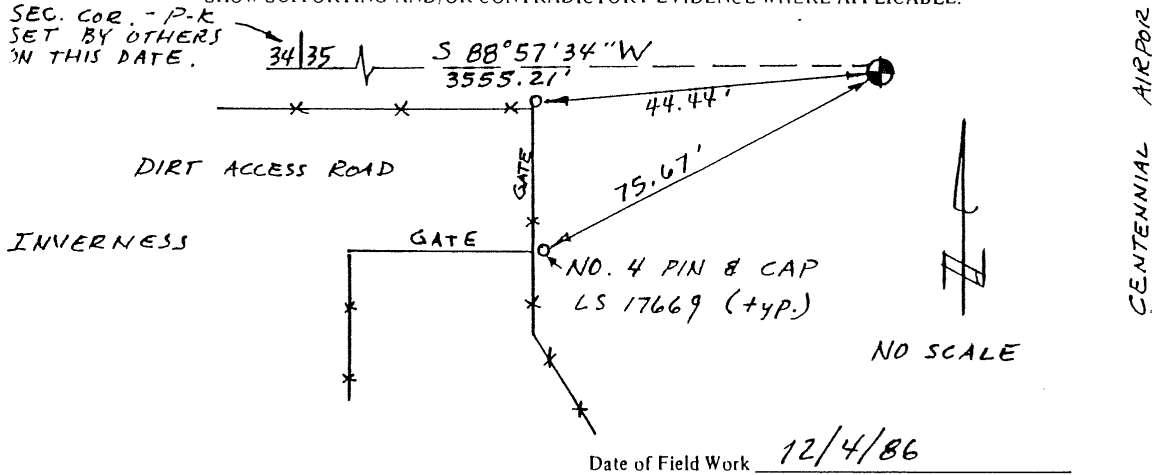
3. DESCRIPTION OF MONUMENT AND/OR ACCESSORIES ESTABLISHED BY YOU TO PERPETUATE THE LOCATION OF THIS POINT. IF AN EXISTING MONUMENT, TELL WHY YOU ACCEPTED IT AS VALID. IF YOU ESTABLISHED OR RESTORED A PUBLIC LAND SURVEY MONUMENT, DESCRIBE PROCEDURE AND CONTROL USED.

⊕ = SET 2" BRASS CAP IN
8" CONC. MON., 2" ABOVE
GROUND WITH FENCE POST.
CAP STAMPED AS SHOWN:



STATE PLANE COORDINATES
MODIFIED TO 5500' AMSL.
N. 631, 909.87
E. 2,182, 809.12
EL. 5813.69' FACTOR = 0.9999852

4. SKETCH SHOWING RELATIVE LOCATION OF MONUMENT AND REFERENCE POINTS. SHOW SUPPORTING AND/OR CONTRADICTORY EVIDENCE WHERE APPLICABLE.



5. CERTIFICATION
This is to certify that I was in responsible charge of the surveying work described in this record and that to the best of my knowledge the information presented herein is true and correct.

Date 12/14/86 Signature Robert D. Wiseman

(Do not fill in)

Accepted for Filing

State Board of Registration for Professional Engineers and Land Surveyors:

By _____

Date _____

RECEIVED AT OFFICE OF THE COUNTY CLERK;

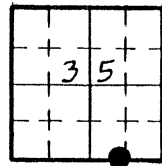
_____ COUNTY

By _____

Date _____

Record to be filed by Index Reference Number, numerically, then alphabetically, under appropriate Township, Range, and Meridian.

6. LOCATION DIAGRAM
1" = 1 Mile



• = Location of Monument



Surveyor's Seal

7. SEC. 35, T 5, R 67W, 6th P.M.
8. COUNTY ARAPAHOE INDEX REF. NO. 19.8 A
COUNTY _____ INDEX REF. NO. _____

COLORADO LAND SURVEY MONUMENT RECORD

REPORT ONE MONUMENT ONLY ON THIS FORM
REPRODUCTION OF THIS FORM IS AUTHORIZED.

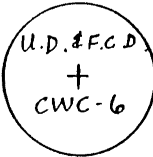
#150

All items to be filled in by the Land Surveyor using black ink or typewriter. (Except)*

1. TYPE OF MONUMENT (Check one) Section Corner Bench mark
 Quarter Corner Other U.D. & F.C.D. CONTROL
2. DESCRIPTION OF EVIDENCE FOUND, AND ORIGINAL RECORD CALL, IF KNOWN CWC-6

3. DESCRIPTION OF MONUMENT AND/OR ACCESSORIES ESTABLISHED BY YOU TO PERPETUATE THE LOCATION OF THIS POINT. IF AN EXISTING MONUMENT, TELL WHY YOU ACCEPTED IT AS VALID. IF YOU ESTABLISHED OR RESTORED A PUBLIC LAND SURVEY MONUMENT, DESCRIBE PROCEDURE AND CONTROL USED.

⊙ = SET 2" BRASS CAP IN 8" Ø CONC. MON, 2" ABOVE GROUND, STAMPED AS SHOWN:

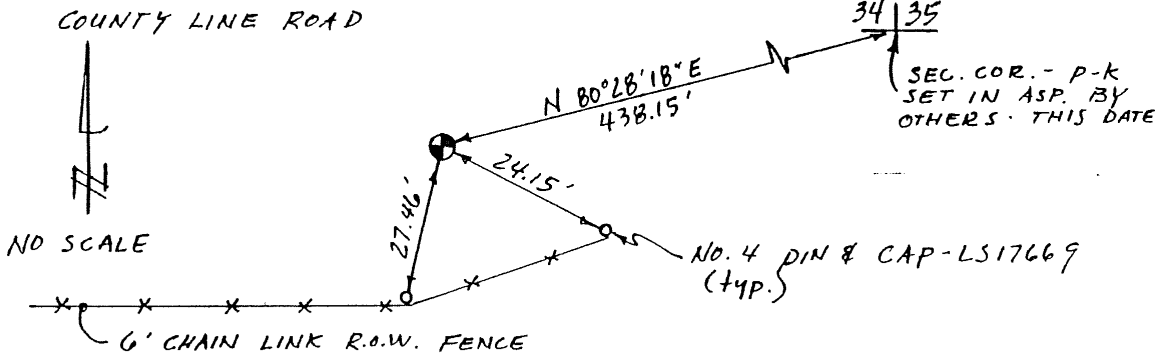


STATE PLANE COORDINATES MODIFIED TO 5500' AMSL.

N. 631,772.79
E. 2,178,822.45
EL. 5855.17

FACTOR = 0.9999852

4. SKETCH SHOWING RELATIVE LOCATION OF MONUMENT AND REFERENCE POINTS. SHOW SUPPORTING AND/OR CONTRADICTORY EVIDENCE WHERE APPLICABLE.



Date of Field Work 12/4/86

5. CERTIFICATION
This is to certify that I was in responsible charge of the surveying work described in this record and that to the best of my knowledge the information presented herein is true and correct.

Date 12/14/86

Signature Robert D. Wiseman

*(Do not fill in)

Accepted for Filing

State Board of Registration for Professional Engineers and Land Surveyors:

By _____

Date _____

RECEIVED AT OFFICE OF THE COUNTY CLERK;

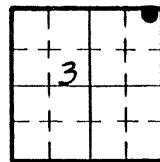
_____ COUNTY

By _____

Date _____

Record to be filed by Index Reference Number, numerically, then alphabetically, under appropriate Township, Range, and Meridian.

6. LOCATION DIAGRAM
1" = 1 Mile



• = Location of Monument



Surveyor's Seal

7. SEC. 3, T 6S, R 67W, 6th P.M.
8. COUNTY DOUGLAS INDEX REF. NO. 16.9 Z
 COUNTY _____ INDEX REF. NO. _____

COLORADO LAND SURVEY MONUMENT RECORD

REPORT ONE MONUMENT ONLY ON THIS FORM
REPRODUCTION OF THIS FORM IS AUTHORIZED.

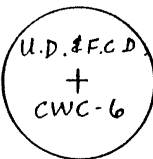
#150

All items to be filled in by the Land Surveyor using black ink or typewriter. (Except)*

1. TYPE OF MONUMENT (Check one) Section Corner Bench mark
 Quarter Corner Other U.D. & F.C.D.
 CONTROL
 CWC-6
2. DESCRIPTION OF EVIDENCE FOUND, AND ORIGINAL RECORD CALL, IF KNOWN

3. DESCRIPTION OF MONUMENT AND/OR ACCESSORIES ESTABLISHED BY YOU TO PERPETUATE THE LOCATION OF THIS POINT. IF AN EXISTING MONUMENT, TELL WHY YOU ACCEPTED IT AS VALID. IF YOU ESTABLISHED OR RESTORED A PUBLIC LAND SURVEY MONUMENT, DESCRIBE PROCEDURE AND CONTROL USED.

⊕ = SET 2" BRASS CAP IN 8" Ø CONC. MON, 2" ABOVE GROUND, STAMPED AS SHOWN:



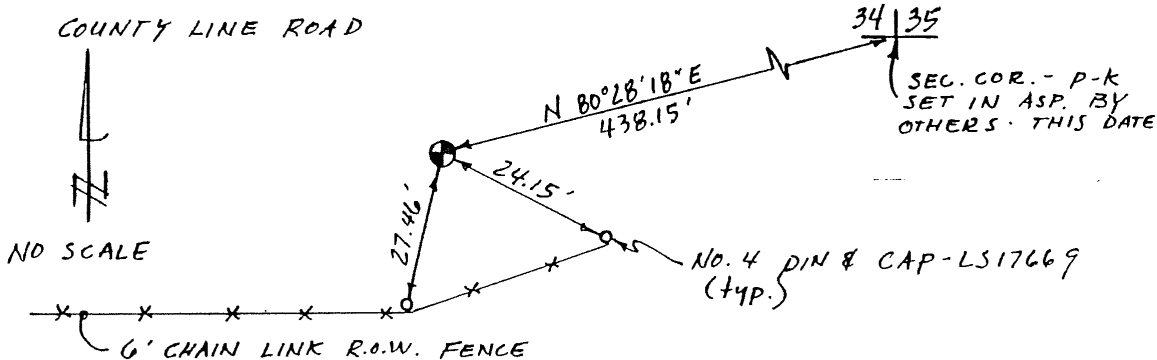
STATE PLANE COORDINATES MODIFIED TO 5500' AMSL.

N. 631,772.79
E. 2,178,822.45

EL. 5855.17

FACTOR = 0.9999852

4. SKETCH SHOWING RELATIVE LOCATION OF MONUMENT AND REFERENCE POINTS. SHOW SUPPORTING AND/OR CONTRADICTORY EVIDENCE WHERE APPLICABLE.



Date of Field Work 12/4/86

5. CERTIFICATION
 This is to certify that I was in responsible charge of the surveying work described in this record and that to the best of my knowledge the information presented herein is true and correct.

Date 12/14/86

Signature Robert D. Wiseman

(Do not fill in)

Accepted for Filing

State Board of Registration for Professional Engineers and Land Surveyors:

By _____

Date _____

RECEIVED AT OFFICE OF THE COUNTY CLERK;

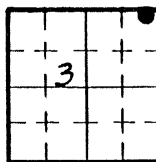
_____ COUNTY

By _____

Date _____

Record to be filed by Index Reference Number, numerically, then alphabetically, under appropriate Township, Range, and Meridian.

6. LOCATION DIAGRAM
 1" = 1 Mile



• = Location of Monument



Surveyor's Seal

7. SEC. 3, T 6S, R 67W, 6th P.M.
8. COUNTY DOUGLAS INDEX REF. NO. 16.9 Z
 COUNTY _____ INDEX REF. NO. _____